



Case Study:

# Disaggregating Race/Ethnicity COVID-19 Data for Hawai'i

Joshua Quint, PhD, MPH

Epidemiologist

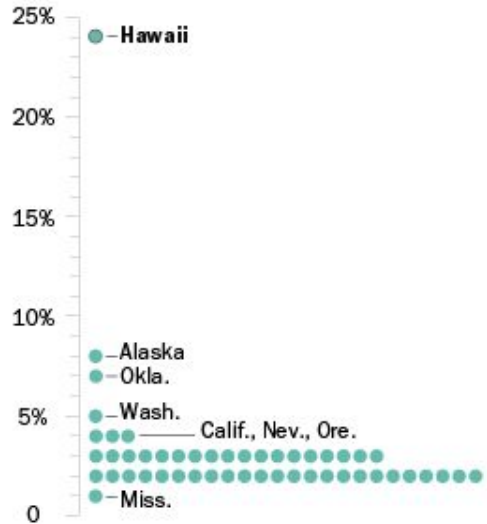
Disease Outbreak Control Division

Hawai'i Department of Health

# Race/Ethnicity in Hawai'i

## Nearly A Quarter of Hawaii's Population is Multiracial

*Share of state population that is 2 or more races*



Source: Pew Research Center tabulations of 2013 American Community Survey (IPUMS)

PEW RESEARCH CENTER

The New York Times

## What the 'Majority Minority' Shift Really Means for America

Aug. 24, 2021



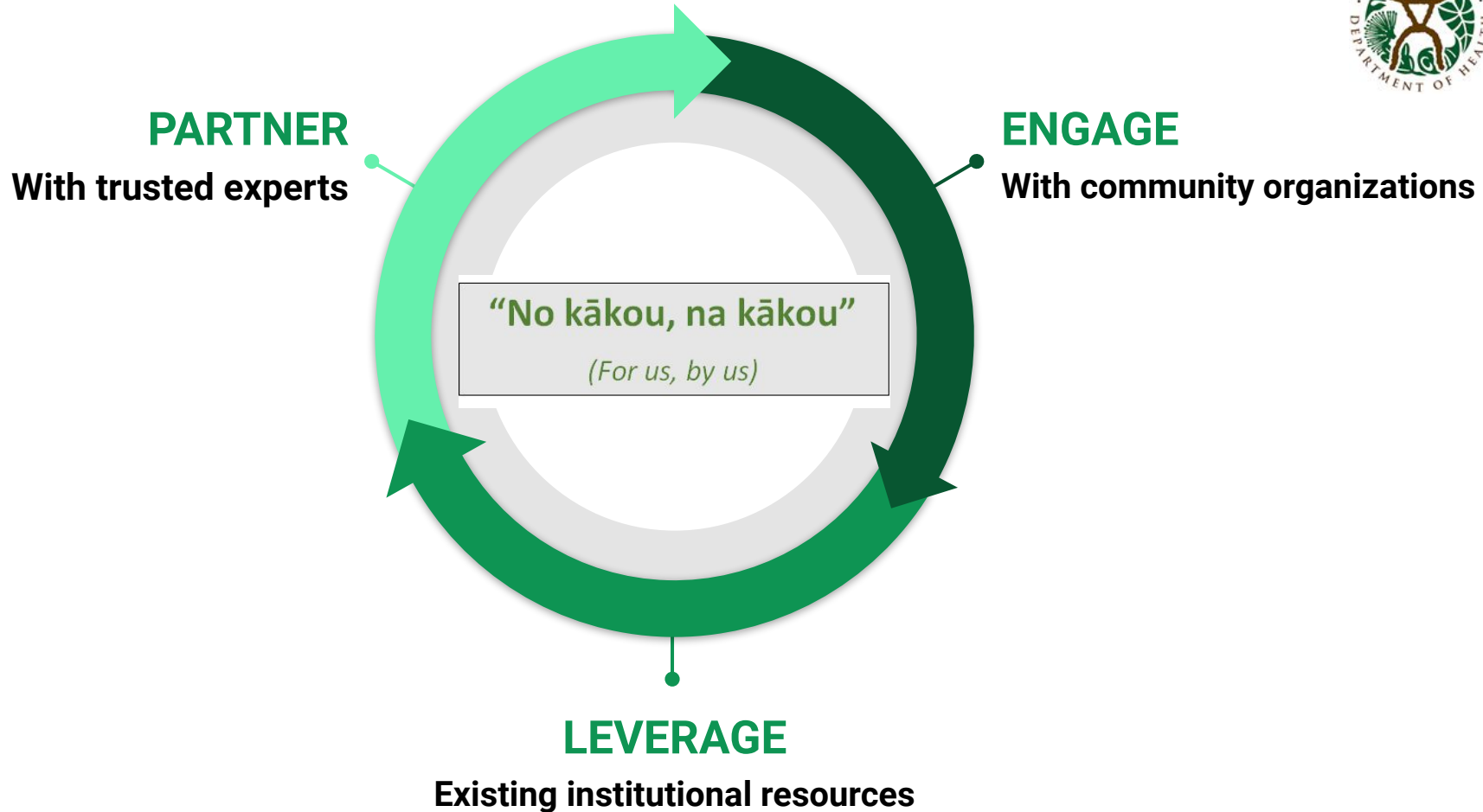


# Principles of Epidemiologic Analysis

**If the data are abundant, it is nearly always preferable to preserve categories.**

- Categories should make sense based on external information.
- Categories should be defined so that important differences in risk exist between categories but not within them.
- Categorize the data much more finely than necessary at first.
- Categories can be collapsed together when data are sparse (as long as these combinations do not merge groups that are disparate with respect to the phenomena under study).

Sander Greenland.  
Fundamentals of Epidemiologic Data Analysis  
Modern Epidemiology 3rd Edition. p.217-218, 303-5





# COVID-19 Timeline

**First case in US diagnosed in Washington State**

Associated with travel from Wuhan, China

**NY, LA report health disparities**

Black and latino communities

**King County reports NHPI disparities**

Highest case and death rate of all groups

**Missing NHPI data**

NHPI data not reported for 27 states

**June 2020**

**First cases diagnosed in Hawai'i**

Associated with travel to continental US

**Hawai'i reports race/ethnicity Data**

NHPI and Asian Aggregated

**DOH joins NHPI COVID Response Team**

**Hawai'i reports disaggregated NHPI data**

**January 2020**

**April 2020**

# Race\* of COVID-19 Cases Compared to State Population (N=541†) (as of April 23, 2020)

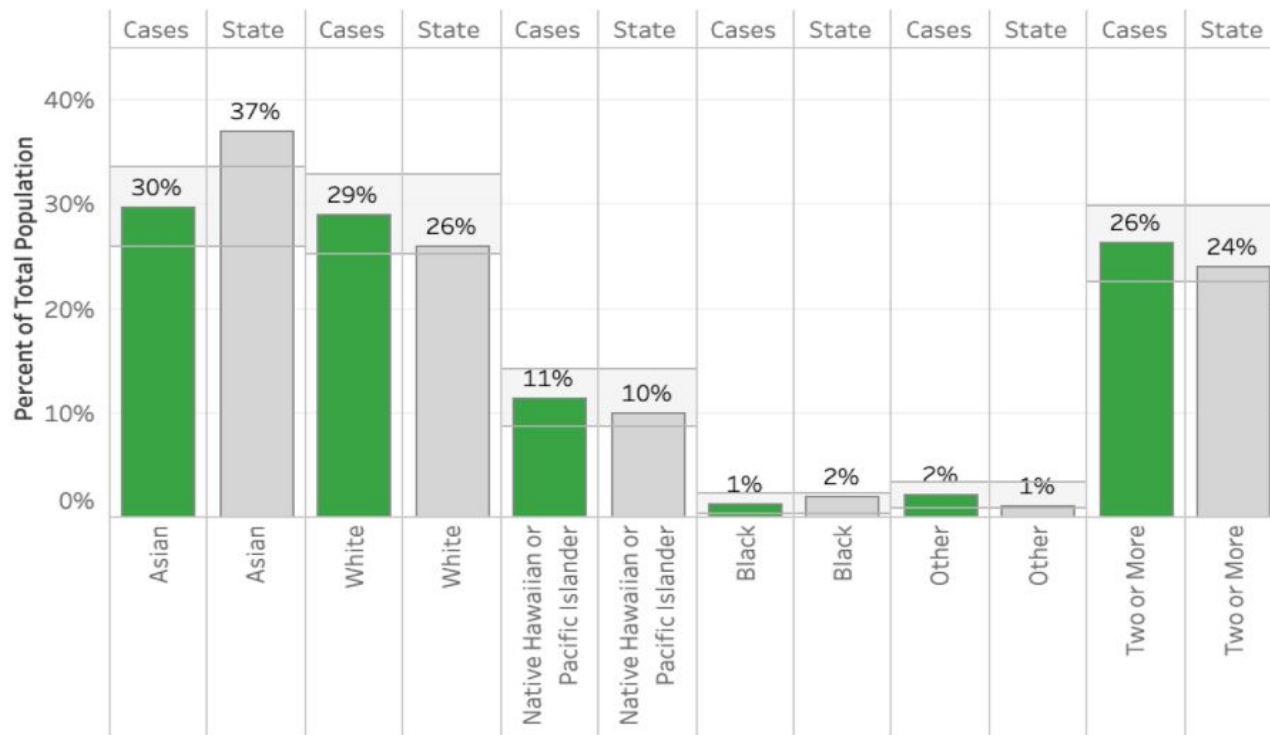
Race

(All) ▼

Legend

Cases

State

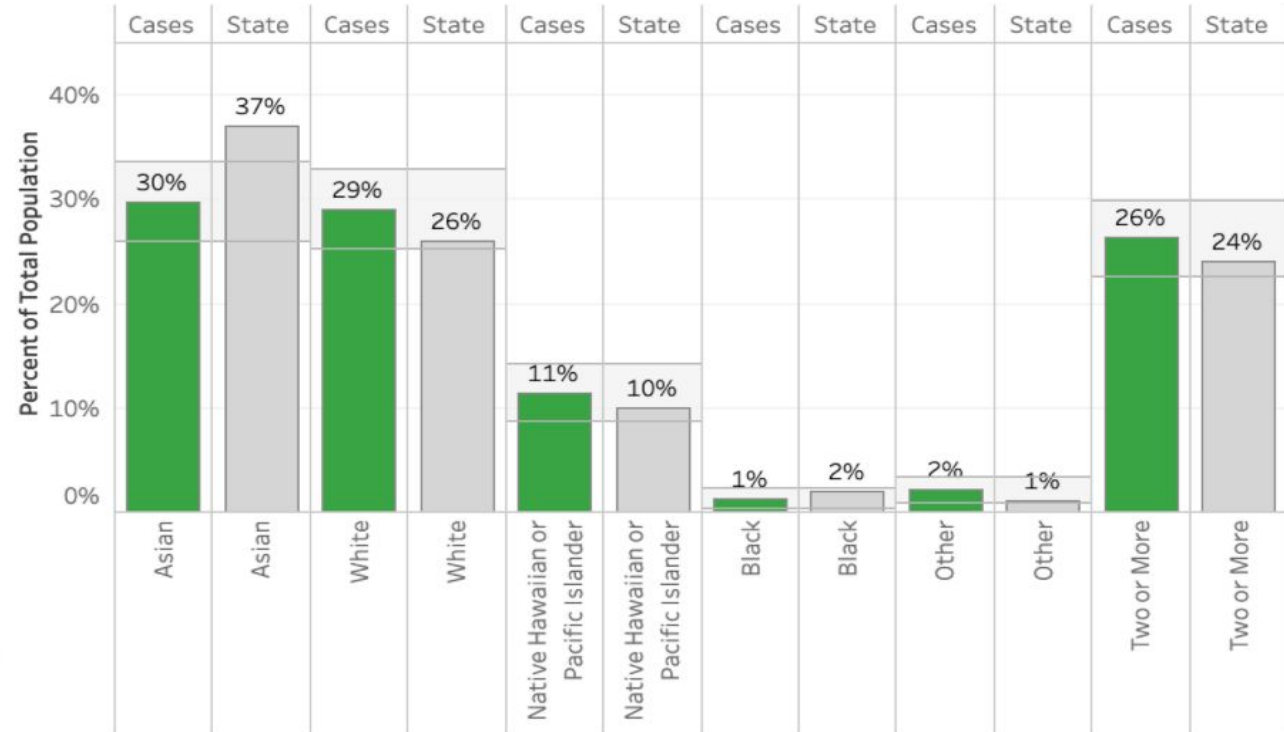




## Race\* of COVID-19 Cases Compared to State Population (N=541†) (as of April 23, 2020)

Race  
(All) ▼

Legend  
■ Cases  
■ State



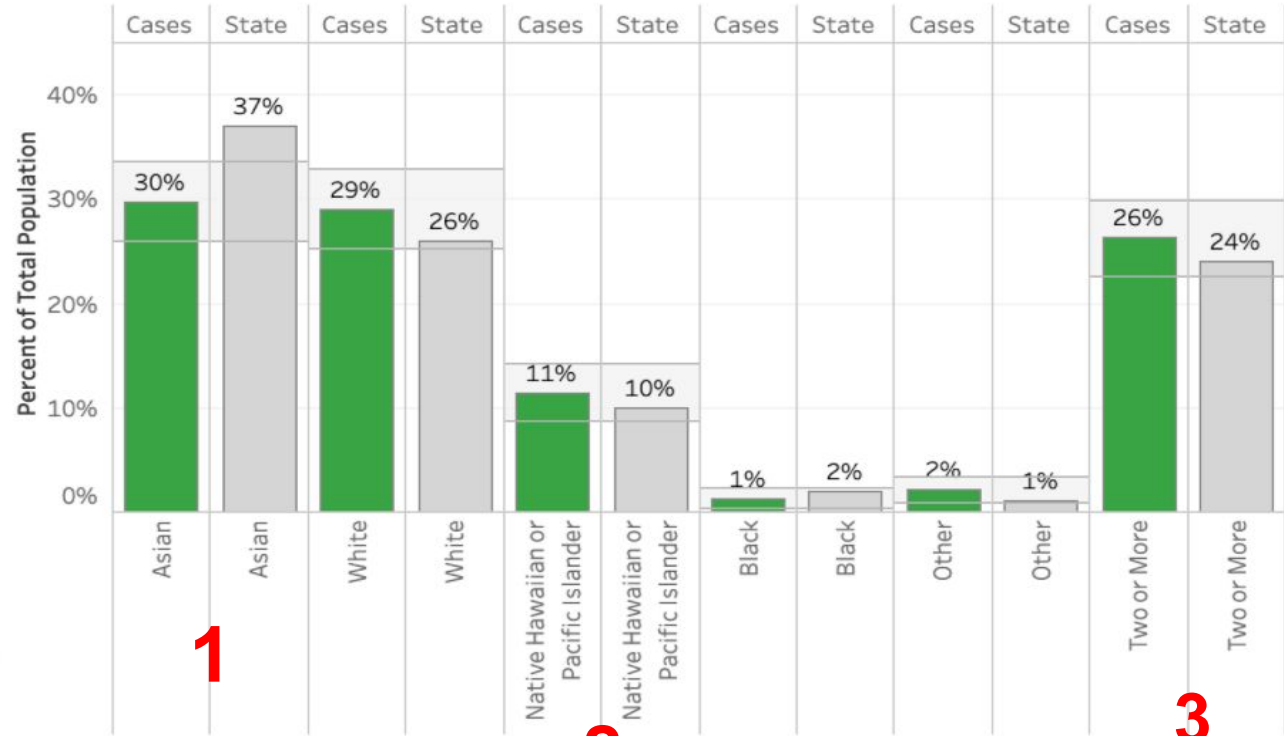
What is wrong  
with this  
picture???



## Race\* of COVID-19 Cases Compared to State Population (N=541†) (as of April 23, 2020)

Race  
(All) ▼

Legend  
■ Cases  
■ State



1. Asian
2. NHPI
3. Two or More





## Race of COVID-19 Cases, Hawaii 2021

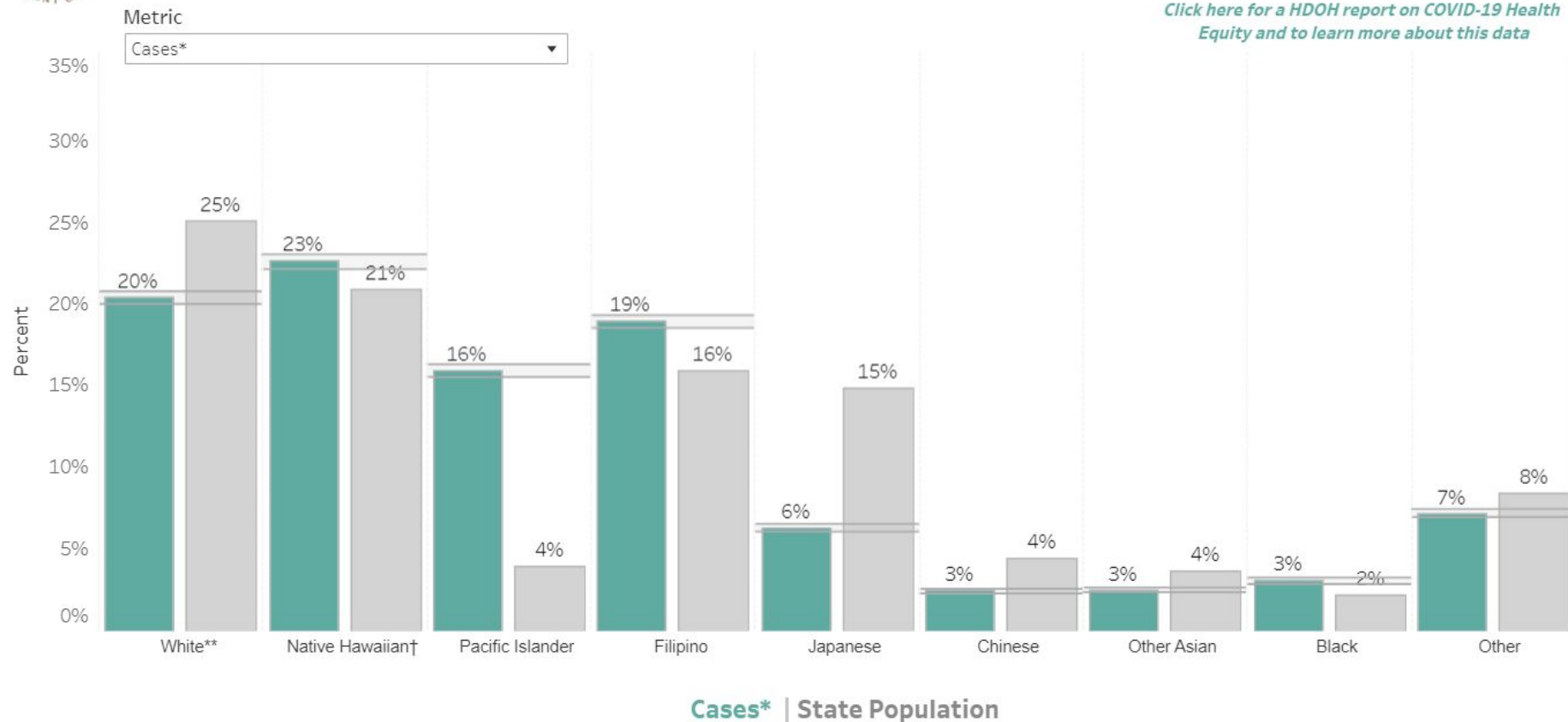
Last updated Wednesday, August 25, 2021 (updated weekly)

Total Number:

37,985



[Click here for a HDOH report on COVID-19 Health Equity and to learn more about this data](#)



## Possible Barriers

## Strategies

Political will

- Response Team / Task Force

Data collection tools

- Revised CDC Form

Data systems

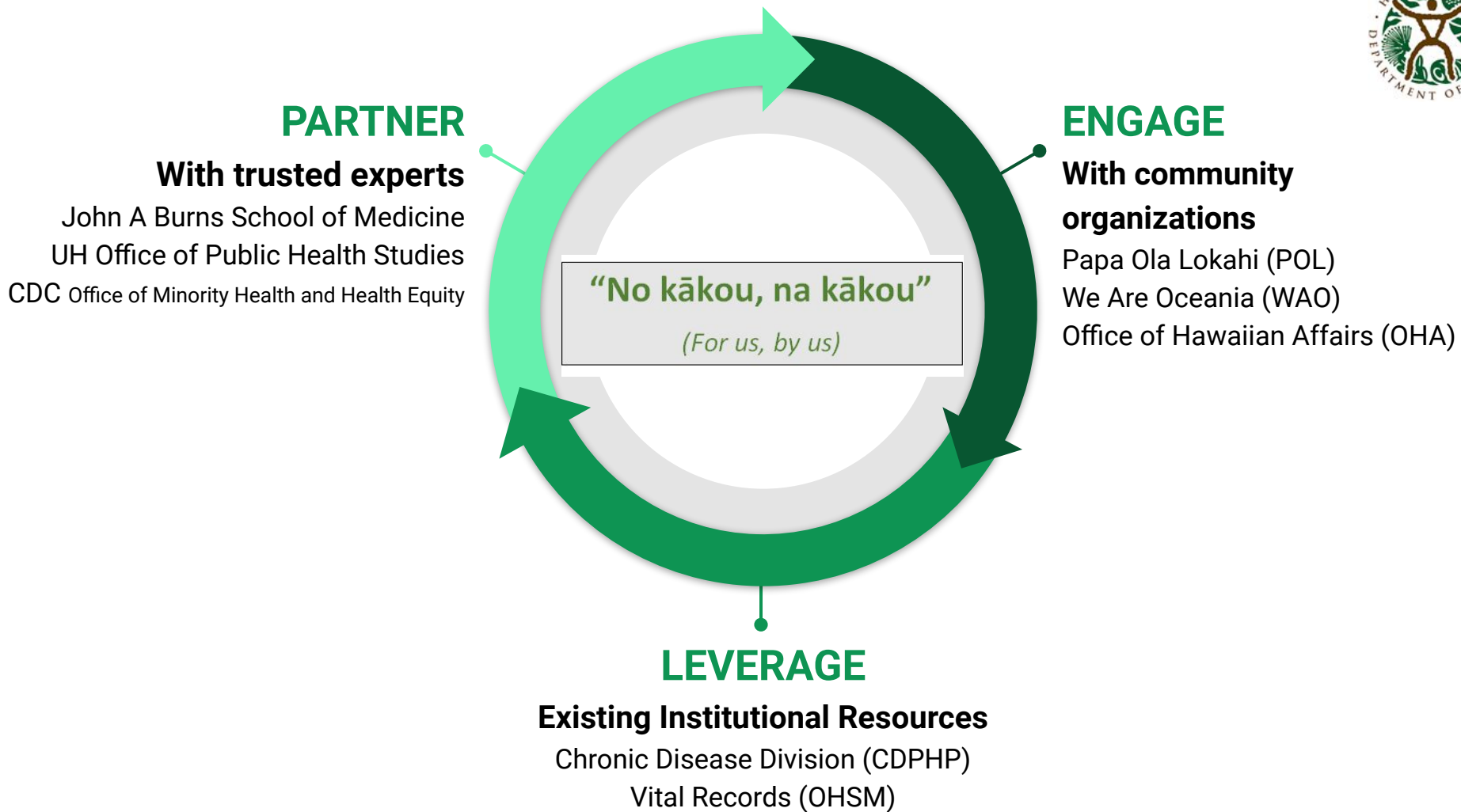
- CDC Race Value Set

Population reference data

- Census API

Reporting guidance

- Advisory Groups





# Other Lessons Learned

## **Promote accessibility**

Interactive data tools (e.g. Tableau, Power BI)

## **Strive for transparency**

Data belongs to the public



# Outcomes

## **Formation of NHPI Investigation and Contact Tracing Team**

Led and staffed by members of impacted communities

## **Collaborative Report on COVID-19 Race/Ethnicity Data**

Detailing community efforts and recommendations

## **Framework for Vaccination Outreach and Surge Response**

Importance of Culturally-Informed and Responsive Interventions



# Future Work

Data Disaggregation Standards Workgroup

Office of Health Equity

Publications

# Mahalo



Hawai'i NHPI COVID-19 Team  
(Data and Research Committee)

Shari Daniels  
Keawe Kaholokula  
Lisa Watkins-Victorino

Hawai'i Department of Health

Sarah Kemble  
Ke'alohi Worthington  
Hailey Maeda

UH Office of Public Health Studies

Catherine Pirkle  
Tetine Sentell  
May Rose Dela Cruz

CDC Office of Health Equity

Miriam Van Dyke  
Ana Penman Aguilar  
Delight Satter



# Resources

## Hawai'i Data Dashboards

<https://health.hawaii.gov/coronavirusdisease2019/current-situation-in-hawaii/>

## Hawai'i Race/Ethnicity Report

<https://hawaiicovid19.com/wp-content/uploads/2021/03/COVID-19-Race-Ethnicity-Equity-Report.pdf>

## CDC Race Value Set

<https://phinvas.cdc.gov/vads/SearchVocab.action> / <https://www.hl7.org/fhir/v3/Race/cs.html>

## Census API

<https://www.census.gov/data/developers/data-sets.html>