

California Health Interview Survey

Making
California's
Voices
Heard on
Health



10960 Wilshire Blvd.
Suite 1550
Los Angeles, CA
90024
t: 310.794.0909
f: 310.794.2686
chis@ucla.edu

CHIS Making an Impact — 2019

The [California Health Interview Survey \(CHIS\)](#) is the largest state health survey and one of the largest health surveys in the nation.

Conducted by the [UCLA Center for Health Policy Research](#) (Center), CHIS interviews more than 20,000 households each year and collects health data on adults, teenagers and children to construct a detailed picture of California's diverse population.

CHIS data is used by state and local legislators and policymakers, academic researchers, advocacy groups, educational institutions, hospital groups, media, and others who value working with credible data.

Highlights of CHIS in 2019 include:

METHODOLOGY UPDATE

CHIS completed a [survey redesign](#) for its 2019-2020 cycle, evolving to both improve survey science and cover emerging health topics. The American Association for Public Opinion Research (AAPOR) included the redesign in a recent report, [Transitions from Telephone Surveys to Self-Administered and Mixed-Mode Surveys](#). For methodology presentations at AAPOR and the European Survey Research Association (ESRA), see [“Presentations and trainings”](#) section.

*“It becomes like the Bible.
It came out of UCLA;
it came out of CHIS —
you know it’s reliable.”*

— [Richard Figueroa](#), acting director of the California Department of Health Care Services, on how data from the California Health Interview Survey is used in reports, analysis, and briefings for elected officials for policymakers.

HEALTH IMPACT AWARD



Ponce

[AcademyHealth](#) awarded its prestigious 2019 Health Services Research Impact Award to Center Director [Ninez A. Ponce](#) and the California Health Interview Survey for research that has had significant impact on health and health care.

CHIS INFORMING LEGISLATION

The California legislature funded CHIS questions in 2019-2020 to assess the extent of need for long-term services and supports (LTSS) for eligible older adults and individuals with physical and mental disabilities. Center Research Scientist [Kathryn Kietzman](#) and Associate Center Director [Steven P. Wallace](#) presented CHIS LTSS survey data at a briefing in Sacramento on Dec. 4.

[California Simulation of Insurance Markets](#) (CalSIM) projections, which use CHIS data, were cited in a Legislative Analyst Office [report](#) about Gov. Newsom's affordability proposals for the individual health insurance market and at a Feb. 12, 2019, [state informational hearing](#) on the same topic.

CalSIM estimates were recently used to gauge the impact of reinstating the “individual

Continued...



UCLA
FIELDING
SCHOOL OF
PUBLIC HEALTH

mandate” and of expanding eligibility for Medi-Cal coverage for undocumented young adults.

The California Health Benefits Review Program (CHBRP), which provides the state legislature with independent analysis of the medical, financial, and public health impacts of proposed health insurance benefit mandates and repeals, uses CHIS in cost models and cites CHIS data in their analyses.

([ACR1](#)-Rob Bonta) The state resolution condemning rule changes to the public charge designation was chaptered by the California state secretary in September. Bonta used Center research in statements and articles about the harmful health and economic impacts of the rule change.

([AB 766](#)-David Chiu) The bill would ban retailers’ use of 16-oz. beverage cups and cites a 2016 Center report that uses CHIS data on prediabetes and diabetes.

([SB347](#)-William Monning) The bill would require safety warnings on sealed containers of sugar-sweetened beverages and included CHIS data on diabetes.

PROJECT FOR LOS ANGELES COUNTY DEPARTMENT OF PUBLIC HEALTH

A [Health DATA](#) evaluation launched in 2019 assesses tenant and landlord experiences with secondhand smoke and attitudes toward smoke-free housing policy in Los Angeles. The project used data from the California Health Interview Survey to assess tobacco-related health disparities among the city’s residents. Findings will be available spring 2020.

USE IN RESEARCH AND ADVOCACY

Fifty-one percent of respondents surveyed about their use of CHIS data said they use it for policy analysis at the state and local level; the same proportion use the data for advocacy work. Chronic diseases, gender, health insurance, and poverty are the most queried topics, but researchers also seek CHIS data on unique topics and for underrepresented populations, to uncover trends — and disparities — in health.

About 75 academic articles, reports or briefs using CHIS data have been published so far in 2019. *Note: An asterisk (*) indicates Center-published research or journal articles authored or co-authored by Center researchers.*

Many of the journal articles on public charge cited CHIS data from the 2018 Center fact sheet *[Proposed Changes](#)

[to Immigration Rules Could Cost California Jobs, Harm Public Health](#) by Ninez A. Ponce, Laurel Lucia, and Tia Shimada.

Public charge
[New Evidence Demonstrates That The Public Charge Rule Will Harm Immigrant Families and Others](#) (Health Affairs Blog)

[Finalized Federal Rule Could Increase the Number of Uninsured in California](#) (Insured the Uninsured Project, Aug. 14 blog post)

[Public Charge: Reducing the Chilling Effect on MediCal Participation Due to the 2018 Proposed Public Charge](#) (UCLA Luskin School of Public Affairs and California Immigrant Policy Center)

[The Trump Administration’s New “Public Charge” Immigration Rule Will Push Thousands of Californians Into Poverty and Hurt the State’s Health and Economy](#) (California Budget & Policy Center)

[Implications of Changing Public Charge Immigration Rules for Children Who Need Medical Care](#) (JAMA Pediatrics)

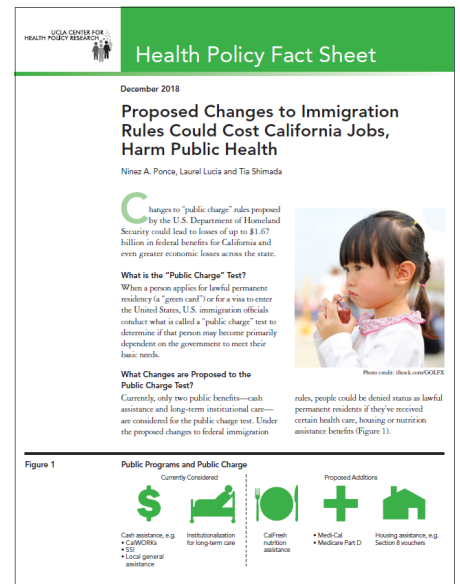
Health insurance

*[Californians Maintain Health Insurance Coverage Despite National Trends](#) (Center policy brief by [Tara Becker](#), Ninez A. Ponce)

*[Reducing Access Disparities in California by Insuring Low-Income Undocumented Adults](#) (Center policy brief by [Nadereh Pourat](#), [Ana Martinez](#))

*[The State of Health Insurance in California: Findings from the 2015-2016 California Health Interview Survey](#) (Center report by [Shana Alex Charles](#) et al)

*[California’s Steps to Expand Health Coverage and Improve Affordability: Who Gains and Who Will Be Uninsured?](#) (UC Berkeley-UCLA report by [Miranda Dietz](#), [Laurel Lucia](#), [Xiao Chen](#) et al)



Continued...

Continued from page 2

* [Source of Success in California's Individual Marketplace](#) (by [Petra Rasmussen](#), [Gerald Kominski](#) in Journal of Health Politics, Policy and Law)

Immigration

[Uncertainty About DACA May Undermine Its Positive Impact on Health for Recipients and Their Children](#) (Health Affairs)

* [Worse Mental Health Among More-Acculturated and Younger Immigrants Experiencing Discrimination: California Health Interview Survey, 2015–2016](#) (Altaf Saadi, Ninez A. Ponce in Journal of General Internal Medicine)

[Relevance of the “Immigrant Health Paradox” for the Health of Arab Americans in California](#) (American Journal of Public Health)

Chronic diseases

[California Health Care Almanac 2019 Edition — Quality of Care and Chronic Conditions](#) (California Health Care Foundation)

[Role of Food Insecurity in Prescription Delay Among Adults with Asthma: Results from the California Health Interview Survey](#) (Journal of Asthma)

[Diabetes and Diabetes Care among Nonobese Japanese-Americans: Findings from a Population-Based Study](#) (Advances in Preventive Medicine)

[Climate Change and Health in California](#) (National Resources Defense Council)

Smoking and e-cigarettes

[Flavored Tobacco Products: An Educational Roundtable](#) (UC Davis Health Comprehensive Cancer Center)

[California Tobacco Facts and Figures 2019](#) (The California Department of Public Health, California Tobacco Control Program)

[Race, Educational Attainment, and E-Cigarette Use](#) (Journal of Medical Research and Innovation)

Mental health

[Monitoring Californians’ Mental Health: Population Surveillance Reveals Gender, Racial/Ethnic, Age, and Regional Disparities](#) (Rand Health Quarterly)

[Weekly Working Hours and Mental Health Status in Different Occupations: Evidence From the 2015–2016 California Health Interview Survey](#) (Journal of Occupational and Environmental Medicine)

[Association Between Rural Residence and Nonfatal Suicidal Behavior Among California Adults: A Population-Based Study](#) (The Journal of Rural Health)

Women, teen, child health

[Disparities in Health Care Utilization Between Asian Immigrant Women and Non-Hispanic White Women in the United States](#) (Journal of Women’s Health)

* [School Discipline Practices Associated with Adolescent School Connectedness and Engagement](#) (Center policy brief by [Susan H. Babey](#) et al)

[Young Children Whose Parents Read with Them](#) (Kidsdata, Lucile Packard Foundation)

Underrepresented populations

[Transgender and Alternative Gender Measurement on the 2018 General Social Survey](#) (National Opinion Research Center at the University of Chicago)

[Impact of Perceived Racism on Healthcare Access Among Older Minority Adults](#) (American Journal of Preventive Medicine)

[2017-2018 Border Health Status Report to the Legislature](#) (California Department of Public Health, Office of Binational Border Health)

Hunger

[Struggling to Make Ends Meet: Food Insecurity in California](#) (California Food Policy Advocates)

[Hunger in San Diego Snapshot: 2017 Food Insecurity Data Release](#)

(Hunger Free San Diego, San Diego Hunger Coalition)

[“This is one dot and it represents one person struggling with food insecurity”](#) (LA County Food Bank)



USE IN HOSPITAL COMMUNITY HEALTH NEEDS ASSESSMENTS

CHIS data are used in dozens of community health needs assessments, which give information on

Continued...

what programs they can provide to meet the health needs of their communities. Some hospital systems using CHIS in their assessments include: [UC San Diego Health](#); [Kaiser Foundation Hospitals, Anaheim and Irvine](#); [Cedars-Sinai](#); [UCI Health](#); [Dignity Health, California Hospital Medical Center](#); [Memorial Care, Orange Coast](#); [UCSF Benioff Children's Hospital, Oakland](#); [St. Francis Medical Center](#); [Riverside University Health System](#); and [Keck Hospital of USC](#).

OTHER WEB DATABASES THAT INCLUDE CHIS DATA

[California Breathing County Asthma Data Tool](#)
(California Department of Public Health)

[Office of Health Equity AskCHIS NE Dashboard](#)
(California Department of Public Health)

[The California Healthy Places Index](#)
(Public Health Alliance of Southern California)

Presentations and trainings

Center staff shared a wealth of CHIS data at various local, state, national and international conferences, seminars, and workshops.



Feb. 1: Center Director [Ninez A. Ponce](#), “The California Health Interview Survey - Monitoring Universal Health Coverage in California” (2019 Annual Symposium of the China-USA Research Center for Life Sciences on Interdisciplinary Research with Global Public Health, hosted by the [UCLA Fielding School of Public Health](#)).

Feb. 5: Ponce, “Mapping the Future of Health Reform: What's Next?” at the Insure the Uninsured Project conference in Sacramento, CA.

Feb. 6: [Health DATA](#) Director [Peggy Toy](#), “How to teach and empower diverse communities to access and use health data to develop health programs,” a career services presentation at the UCLA Fielding School of Public Health.

Feb. 19: Associate Center Director [Nadereh Pourat](#) and Emmeline Chuang, “[Reducing Access Disparities in California by Insuring Low-income Undocumented Immigrants](#)” for a Center Health Policy Seminar.

March 7 and 12: Toy and student researcher Melissa Chimwaza taught [Building Healthy Communities](#) partners

how to generate CHIS data and create graphics specific to their neighborhood in an online workshop.

March 22: Ponce, “The role the California Health Interview Survey has in informing health policies that improve health and health equity among Californians” at a public lecture at the University of the Philippines Manila’s College of Public Health.

April 17: [Linda Diem Tran](#), Center associate and post-doctoral fellow, Department of Veterans Affairs and Stanford University, “The Impact of Gentrification on Adult Mental Health,” hosted by the UCLA Ziman Center for Real Estate at the UCLA Anderson School of Management.

April 30: Ponce, “Hidden Identities, Hidden Lives: When Data Obscures Health Disparities” at the Jacob Marschak Interdisciplinary Colloquium on Mathematics in the Behavioral Sciences at UCLA.

May 14-15: CHIS Director [Todd Hughes](#), “Using ACS Data to Construct and Visualize Small Area Estimates for the California Health Interview Survey” at the 2019 ACS Data Users Conference.

May 16-19: Five presentations at American Association for Public Opinion Research (AAPOR) by Hughes, CHIS Methodology Manager [Brian M. Wells](#), and CHIS Assistant Director [Royce Park](#) in Toronto, Canada:

- “Can mixed mode replace CATI RDD for complex surveys of diverse populations? Results from a field experiment of the California Health Interview Survey”
- “‘Responda hoy’: An experiment in recruiting Spanish speakers for an ABS web survey”
- “The importance of leveraging a parent’s influence in an ABS push-to-web survey of teenagers”
- “No child left behind: Advantages of asking about children before adults in a household web survey”
- “Respondent accountability versus task complexity: A comparison of three within-household selection instructions for a web-first survey”

“The information you put together is such a driving force in how we can get to the ultimate goal to get health coverage for everyone in California.”

Thank you for the information that you generate, for your work. It's incredibly valuable to us.”

Jim Wood, (D-Santa Rosa),
Chair of the Assembly Health Committee

Continued...

July 18: Hughes, "Finding effective ways to encourage teens to participate in a web-push survey" and "Innovating a multi-mode design for a diverse, multilingual population: Results from a field experiment of the California Health Interview Survey" at the European Survey Research Association.

Oct. 16: Ponce, "Workshop on Aging & Health: How to Use Data to Find Stories," hosted by the Association for Health Care Journalists, Los Angeles, CA.

Oct. 24: Ponce and Hughes, "[California Health Interview Survey 2018 Data Release](#)" for a Center Health Policy Seminar.

Nov. 2-6: [Fifteen papers and sessions](#) that featured CHIS data were presented by researchers at the American Public Health Association 2019 annual meeting. Copies of more than 400 articles and publications CHIS data were disseminated to meeting attendees at the Center's exhibit booth.

External CHIS presentation

April 16: The Stanford Maternal & Child Health Research Institute (MCHRI) seminar, "[The Health and Well-being of Children in Immigrant Families: Understanding the Impact of National Immigration Policy](#)"

MEDIA COVERAGE

About 60 media stories featured CHIS research this year. A sampling:

["Pit of Infection': A Border Town's Crisis Has Nothing to Do With Migrants"](#) (The New York Times)

["Diabetic Amputations A 'Shameful Metric' of Inadequate Care"](#) (Health Leaders Media)

["College students, seniors and immigrants miss out on food stamps. Here's why."](#) (CalMatters)

["Diabetes nearly double for Japanese Americans"](#) (EurekaAlert!)

["Winters mom struggles to maintain her food supply"](#) (Daily Democrat)

["Emotional Support May Help Reduce Health Disparities, Says Study of Valley Cancer Survivors"](#) (Valley Public Radio)

["California woman is unable to get insurance – so she took her health into her own hands"](#) (Fresno Bee)

["After Losing a Partner, a Search for Companionship"](#) (CALmatters, KPBS, KPCC, KQED and Capital Public Radio-California Dream Series)

["California Becomes First State to Require Healthy Drinks on Kids' Restaurant Menus"](#) (Moms Rising)

AskCHIS®

More than 1.43 million queries have been made using the web query tool AskCHIS® since 2003.

Lifetime queries 1,425,903
Total indicators queried (12 months)*: 82,607

Top indicators:

1. Current Smoking Status – Adults
2. Ever diagnosed with diabetes
3. Body Mass Index – 4 level (adult only)
4. Currently insured
5. Ever diagnosed with asthma
6. Likely has had serious psychological distress during past year
7. Ever told has pre- or borderline diabetes
8. Time since last dental visit
9. Ever diagnosed with heart disease
10. Ever diagnosed with high blood pressure
11. Health status
12. Food insecurity (ability to afford enough food)
13. Poverty level
14. Covered by Medi-Cal
15. Smoked e-cigarette in past 30 days
16. Type of current health insurance coverage – all ages
17. Saw any health care provider for emotional-mental and/or alcohol-drug issues in past year
18. Overweight for age (does not factor height)
19. Ever seriously thought about committing suicide
20. Have usual place to go to when sick or need health advice

AskCHIS Neighborhood Edition®

Lifetime queries: 122,239
Total indicators queried (12 months)*: 24,753
Total geographies queried: 165,842
12-month geographies queries: 35,844

Top indicators:

1. Adult Diabetes
2. Adult Asthma
3. Currently Smoking Status – Adults
4. Adult Obesity
5. Adult Food Insecurity

*Period from Dec. 1, 2018 to Dec. 1, 2019