

CHIS MAKING AN IMPACT 2020



california
health
interview
survey



TABLE OF CONTENTS

1

From the
directors

2

What is
CHIS?

8

Legislation and
advocacy

4

COVID-19 dashboards
and research

10

CHIS in
UCLA CHPR
seminars, events,
and publications

12

Journal articles,
external publications,
and presentations

18

What's new in
CHIS 2019–2020?

22

Media

FROM THE DIRECTORS

2020 has been a year of upheaval and uncertainty in public health. The COVID-19 pandemic was one of the biggest disruptors, igniting around the world and striking specific communities in America like a sledgehammer: older adults, the poor, those with underlying health conditions, and communities of color, whose members make up the bulk of health care and other necessary workers. More than a quarter of a million people have died in the United States, nearly 20,000 of them in California.

The pandemic pushed the research community to create tools to track the disease and help control its spread. The California Health Interview Survey (CHIS) quickly developed dashboards that provided context amid the turmoil of COVID-19, providing easily accessible data about health disparities in California. These tools showed which groups were most at risk from the disease based on incidence of chronic diseases, income, race/ethnicity, and other factors. CHIS added a series of COVID-19 questions and, for the first time in history, we released preliminary estimates more than a year before release. CHIS was also used to inform timely studies that showed the importance of access to care to battle the disease among those who are most susceptible.

CHIS informs and educates legislators who make decisions about health policy and health advocates who shed light on health disparities that affect Californians – from the physical and mental health of communities of color to a tally of those who gained access to care under the Affordable Care Act to food consumption and exercise trends. The data are used by scholars conducting analysis and students learning to use statistical tools. Stories published or aired in national and international media use CHIS to provide critical background about health and health policy.

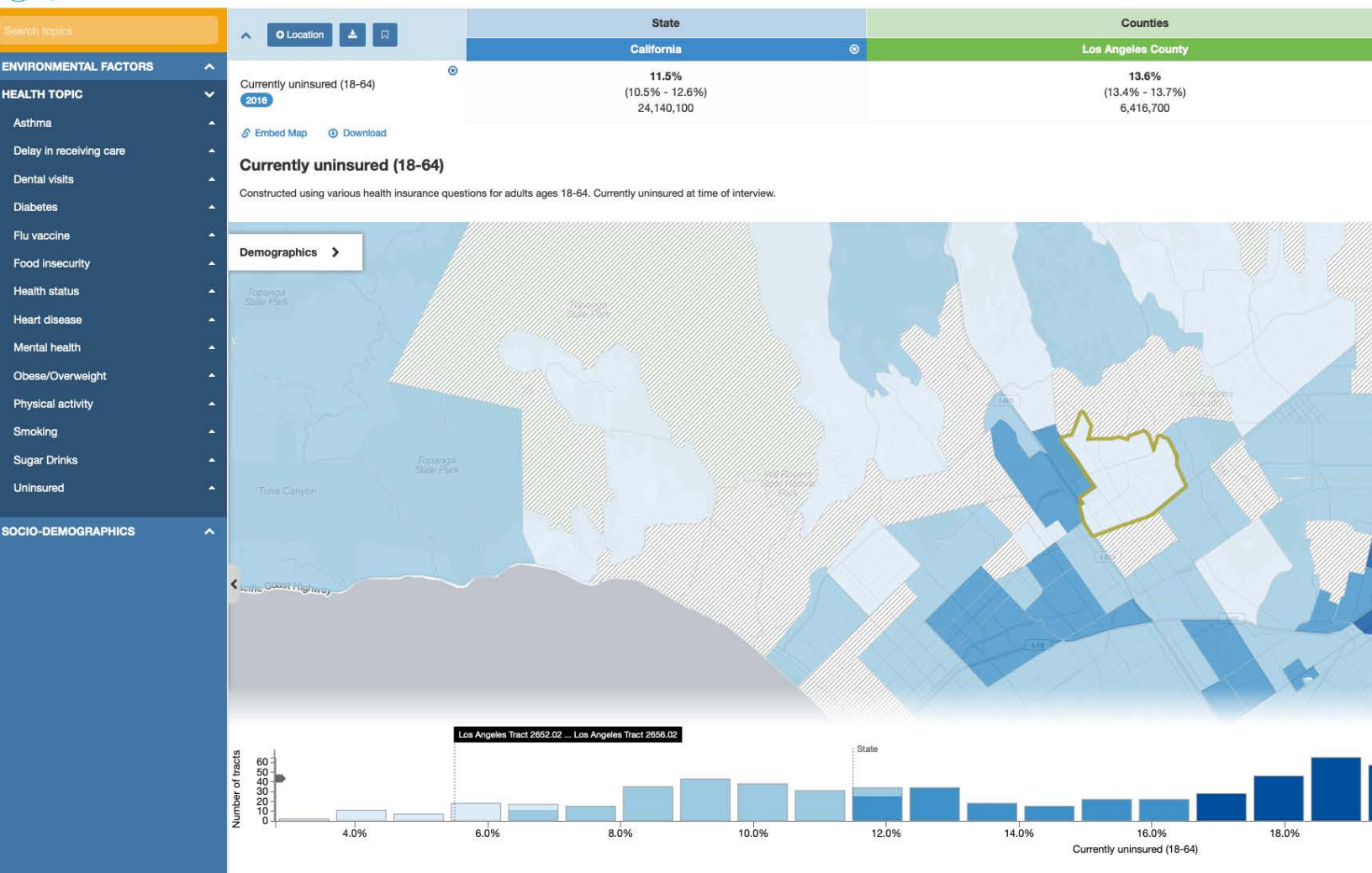
In a tumultuous year of health news, CHIS remained a constant, providing credible, comprehensive, and accessible data.



Ninez A. Ponce, PhD, MPP
Director, UCLA Center for Health
Policy Research, and Principal
Investigator, CHIS



Todd Hughes
Director, CHIS



WHAT IS THE CALIFORNIA HEALTH INTERVIEW SURVEY?

The **California Health Interview Survey (CHIS)** is the largest state health survey and one of the largest health surveys in the nation. Conducted by the UCLA Center for Health Policy Research (CHPR) in English, Spanish, Chinese (Mandarin and Cantonese), Korean, Japanese, Vietnamese, and Tagalog, CHIS interviews more than 20,000 households each year and collects health data on adults, teenagers, and children to construct a detailed picture of the health and health care needs of California's large and diverse population.

Legislators, policymakers, local health departments, state agencies, community organizations, advocacy groups, foundations, researchers, and many others use CHIS data to justify programs that fight health threats. Our mission is to democratize data by putting it into the hands of all Californians through accessible tools, publications, and trainings. Some of our notable tools include:

AskCHIS™: an online health query system that allows you to quickly search for health statistics on your county, region, and state.

AskCHIS Neighborhood Edition™ (AskCHIS NE): provides health estimates for California's diverse population at the local level (census tracts, ZIP codes, and cities).



1.57 million total queries made using AskCHIS™ and AskCHIS NE™ since their inception



63,248

registered AskCHIS™ and AskCHIS™ NE users



93,317

queries run in AskCHIS™ and AskCHIS NE™ in 2020

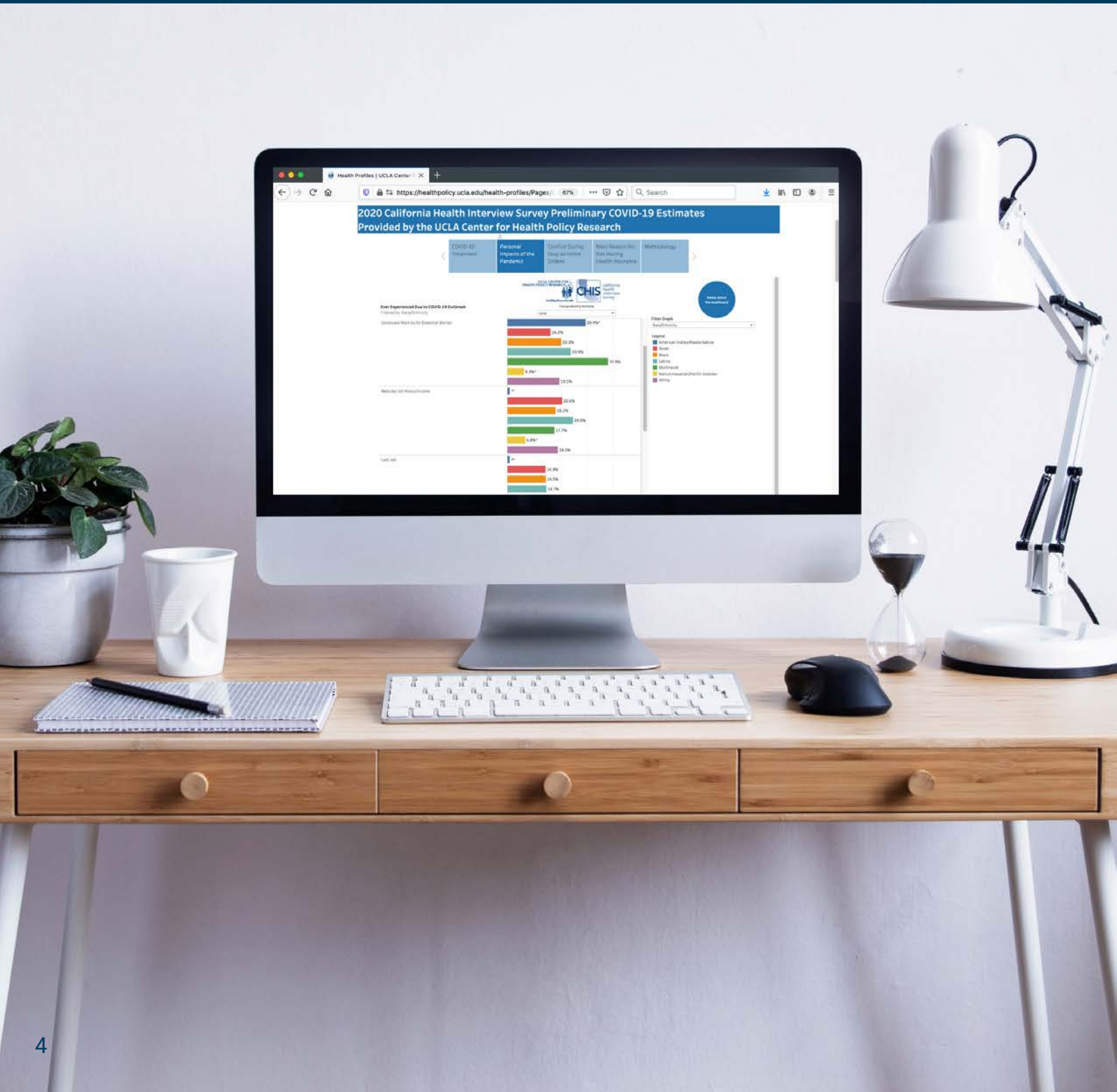


Top 10 queries run in AskCHIS™ in 2020

- 1** Ever diagnosed with diabetes
- 2** Current smoking status (adults)
- 3** Ever diagnosed with asthma
- 4** Currently insured
- 5** Health status
- 6** Ever diagnosed with heart disease
- 7** Body Mass Index — 4 level (adult)
- 8** Covered by Medi-Cal
- 9** Ever told has pre- or borderline diabetes
- 10** Likely has had serious psychological distress during past year

COVID-19 DASHBOARDS

In response to the COVID-19 pandemic, the UCLA CHPR created tools to track COVID-19 and various risk factors across California counties, as well as preliminary estimates from new COVID-19 questions in CHIS 2020.



2020 CHIS COVID-19 PRELIMINARY MONTHLY ESTIMATES

Preliminary monthly estimates from new COVID-19 questions added to the 2020 CHIS that include data from all surveys completed across California starting in May. Topics include COVID-19 treatment, personal and financial impacts of the pandemic, interpersonal conflict during stay-at-home orders, and more. Data on these topics are presented at the state level and can be filtered by numerous socioeconomic characteristics (including age, race/ethnicity, citizenship status, insurance status, income, and others) and health risk factors (asthma, diabetes, and high blood pressure).

COVID-19 RATES AND RISK FACTORS BY CALIFORNIA COUNTY DASHBOARD

Presents total COVID-19 case and death rates by each California county, race/ethnicity case, and death rates by those counties that provide COVID-19 data by race/ethnicity and CHIS estimates for COVID-19 risk factors for California counties by total population and race/ethnicity.

COVID-19 RATES AND RISK FACTORS BY CALIFORNIA COUNTY DATA TABLE

Presents total COVID-19 case and death rates by each California county and CHIS estimates for COVID-19 risk factors for California counties by total population.

NHPI COVID-19 DATA POLICY LAB DASHBOARD

Presents state-level COVID-19 case and death rates for Native Hawaiians and Pacific Islanders across the United States. Over 350 people from the CDC, California Department of Public Health, and many other organizations joined the launch of the NHPI COVID-19 Data Policy Lab. Data produced by the Lab were presented before the [U.S. House of Representatives' Ways and Means Committee](#) in May 2020. In December 2020, the Lab was awarded a \$500,000 grant from the Robert Wood Johnson Foundation.

“

In order to provide timely insights on the impacts of the COVID-19 pandemic, this is the first time in the survey's 20-year history that we're releasing monthly data estimates before our annual data release in October of the following year. All of the data we're producing from CHIS aligns with our Center's mission of democratizing access to impactful and actionable data, and we will continue to provide high-quality data and tools to assist researchers, policymakers, advocacy organizations, and other partners in looking at profiles of our diverse population.”

”

Todd Hughes, CHIS Director

DASHBOARDS BY THE NUMBERS

CHIS' COVID-19 dashboards reached audiences around the world — from right here in Los Angeles to across the pond in London and all the way to Guam.



13,116

Total number of views on COVID-19 dashboards

8,446

Total number of unique visitors

MEDIA MENTIONS

CHIS COVID-19 dashboards and research were featured in

25+

 news outlets including:

- NBC Los Angeles
- Fresno Bee
- Telemundo
- MyNewsLA.com
- Medical Xpress
- CalMatters
- San Jose Mercury News
- KCRW-FM Online
- The Wall Street Journal
- The Guardian
- Health Affairs
- KNTV-TV Online
- SiriusXM Radio's "Doctor Radio"
- City News Service



SOCIAL MEDIA

facebook



twitter



YouTube

1,961

total reach of COVID-19 dashboards

1,026

COVID-19 dashboard impressions

191

COVID-19 dashboard video tutorial views

COVID-19 ARTICLES AND RESEARCH THAT USE/REFERENCE CHIS

[Pseudo-Likelihood Based Logistic Regression for Estimating COVID-19 Infection and Case Fatality Rates by Gender, Race, and Age in California](#) (MedRxiv)

[Food Insecurity and COVID-19: Disparities in Early Effects for US Adults](#) (Nutrients)

[Health Vulnerabilities to COVID-19 Among LGBT Adults in California and Economic Vulnerabilities to COVID-19 Among LGBT Adults in California](#) (Williams Institute)

[Data Brief: Health Coverage of California Workers Most at Risk of Job Loss Due to COVID-19](#) (UC Berkeley Labor Center and UCLA Center for Health Policy Research)

[Assessment of Health Information About COVID-19 Prevention on the Internet: Infodemiological Study](#) (JMIR Public Health and Surveillance)

[Tobacco Control is a Critical Component to COVID-19 Management](#) (UC Merced Nicotine & Cannabis Policy Center)

[Vulnerabilities to COVID-19 Among Older LGBT Adults in California](#) (Williams Institute)

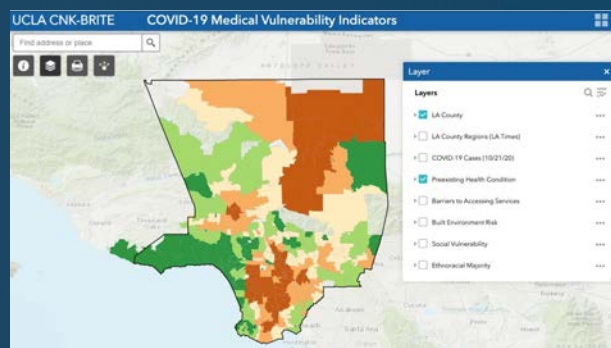
[Equal Access to Telemedicine during COVID-19 Pandemic: A Pediatric Otolaryngology Perspective](#) (Laryngoscope)

[Racial/Ethnic Disparities in Household Food Insecurity During the COVID-19 Pandemic: A Nationally Representative Study](#) (Journal of Racial and Ethnic Health Disparities)

[Exploring WHO Communication during the COVID 19 Pandemic through the WHO Website Based on W3C Guidelines: Accessible for All?](#) (International Journal of Environmental Research and Public Health)

TRAINING STUDENTS TO CONDUCT COVID-19 RESEARCH

The UCLA Center for Health Policy Research partnered with UCLA Health Disparities and the Environment Professor Paul Barber to train a class of 21 students on how to use AskCHIS and AskCHIS NE to analyze health status, health access, and socioeconomic characteristics of select populations and COVID-19 infections. Students used the AskCHIS NE Application Programming Interface (API) throughout their research and presented their findings.



PREDICTIVE MODEL THAT USES CHIS DATA

The UCLA BRITE Center for Science, Research and Policy and UCLA Center for Neighborhood Knowledge developed a predictive model that pinpoints which populations in Los Angeles County neighborhoods are most at risk of COVID-19 infection. Using CHIS and other data sources, [Los Angeles Neighborhoods and COVID-19 Medical Vulnerability Indicators: A Local Data Model for Equity in Public Health Decision-Making](#) maps each neighborhood, based on indicators known to increase a person's vulnerability to infection. Researchers hope the model will assist in effectively and equitably implementing vaccine distribution, testing, closures/reopenings, and other mitigation measures.

16 researchers/research groups applied for access to 2020 CHIS COVID-19 questions

LEGISLATIVE AND GOVERNMENT IMPACT

From Covered California to the California Health Benefits Review Program and so much more, CHIS data are making an impact across the nation.

CHIS IN U.S. COURT DECISION

U.S. Court of Appeals for the Ninth District: City and County of San Francisco vs. U.S. Citizenship and Immigration Services cited a UCLA CHPR Health Policy Seminar as evidence to oppose public charge with data on the number of people who would disenroll in Medicaid and other public services.

CHIS AND LEGISLATIVE ANALYSIS

The California Health Benefits Review Program (CHBRP), which provides the California State Legislature with independent analysis of the medical, financial, and public health impacts of proposed health insurance benefit mandates and repeals, used CHIS for part of the analysis or background for four bills:

CA Assembly Bill 2258 Doula Care: Medi-Cal Pilot Program

CA Senate Bill 855 Health Coverage: Mental Health or Substance Abuse Disorders

CA Assembly Bill 2242 Mental Health Services

CA Assembly Bill 2203 Insulin Cost-Sharing Cap

CHIS AND THE STATE HEALTH INSURANCE MARKET

CHIS is included in the **California Simulation of Insurance Markets (CalSIM)**, a microsimulation tool developed by UCLA CHPR and UC Berkeley Center for Labor Research, which provides analysis on the likely impacts of the Affordable Care Act (ACA) to policy advocates, including Health Access and the Western Center on Law & Poverty. CalSIM provides technical support to the **Healthy California for All Commission** and was featured in the **Current State of Health Care in California** presentation at the Commission's first meeting in 2020.

Covered California, the state health insurance marketplace, uses CalSIM projections on health enrollment to guide their decision-making. CalSIM and CHIS were referenced in the **Covered California Annual Report and Fiscal Year 2020-2021 Budget**.

CHIS IN GOVERNMENT REPORTS

Substance Use Prevention Services Strategic Prevention Plan July 2020-June 2025, County of Los Angeles Public Health

Los Angeles County Office of Violence Prevention Early Implementation Strategic Plan 2020-2024: A Blueprint for Peace and Healing, County of Los Angeles Public Health

Orange County Community Indicators Report 2020-2021

Greater San Gabriel Valley Community Health Snapshot, Greater San Gabriel Valley Hospital Collaborative

ADVOCATE BLOGS/REPORTS

California Should Continue to Prioritize Funding for Community-Based Behavioral Health Services, Not Expanding Incarceration, National Health Law Program

The Affordable Care Act Turns 10, California Health Care Foundation

Improving Health Care Data in California, Public Policy Institute of California

Amid Confusion over the Public Charge Rule, Immigrant Families Continued Avoiding Public Benefits in 2019, Urban Institute

CHIS CITED IN GOVERNMENT AND OTHER DASHBOARDS

U.S. Health and Human Services' HealthData.gov Asthma Prevalence Dataset

National Cancer Institute Short Dietary Assessment Instruments

National Library of Medicine*

California Department of Health Care Services*

California Department of Aging, various reports

Imperial County Public Health Department health data and statistics page

Orange County's Healthier Together dashboard

Health Matters in Ventura County dashboard

Sonoma County Geography, Demographics, and Socio-Economic Data website

Live Well San Diego: Report Card on Children, Families, and Community 2019

California Department of Public Health's California Breathing County Asthma Data Tool

Office of Health Equity AskCHIS NE Dashboard

The California Healthy Places Index

California Health Maps

Healthy City

Kidsdata.org various online dashboard reports

*CHIS listed as a resource

“

“The California Health Interview Survey is **one of its kind in the nation** and the largest comprehensive opportunity to get a look across-cutting information. I am proud to be the Agency Secretary that supports the two departments that are major financial contributors to this survey.”

”

Dr. Mark Ghaly, California Health and Human Services Secretary



CHIS IN UCLA CHPR SEMINARS AND EVENTS

Several UCLA CHPR seminars, webinars, and events included and/or referenced CHIS:

Addressing the Aging Population and the Needs of Older Adults/Mapping California Health Interview Survey Data to California's Master Plan for Aging

Ritu Sadana (World Health Organization),
Kathryn Kietzman

Pride and Pandemic: Vulnerabilities to COVID-19 Among LGBT Adults in California

Kathryn O'Neill (Williams Institute)

Combining Traditional Modeling with Machine Learning for Predicting COVID-19

Christina Ramirez (UCLA Fielding School of Public Health)

Hidden No More: Unmasking Data for Health Equity, Introducing the Native Hawaiian and Pacific Islander (NHPI) COVID-19 Data Policy Lab

Ninez A. Ponce, Richard Calvin Chang, Corina Penaia, Karla Thomas, Vananh Tran, John Greer, Nicholas Pierson

CHIS 2019 Data Release

Ninez A. Ponce, Todd Hughes, Susan H. Babey

Overcoming Invisibility: Better Health Data for American Indians and Alaska Natives

Tara Becker, Riti Shimkhada, Ninez A. Ponce

2020 E.R. Brown Virtual Symposium – Healing a Fractured Society: Health Care as a Right

Ninez A. Ponce, et al.

National Network of Surveys' Workshop Series: Addressing Health Equity through Data Disaggregation

Ninez A. Ponce, AJ Scheitler, Tara Becker

2020 California Health Interview Survey (CHIS) Data User Training

Peggy Toy, Jacob Rosalez

CHIS IN UCLA CHPR PUBLICATIONS

More than 80 publications used or referenced CHIS data, including 7 policy briefs, 6 information graphics, and 1 fact sheet produced by UCLA Center for Health Policy Research authors.

Nearly 2 Million California Adults Not Getting Needed Public Mental Health Services (policy brief)

D. Imelda Padilla-Frausto, Safa Salem

The Changing Landscape: Tobacco and Marijuana Use Among Young Adults in California (policy brief)

Ying-Ying Meng, Ninez A. Ponce

Despite Insurance, the Poorest Adults Have the Worst Access to Dental Care (policy brief)

Nadereh Pourat, Maria Ditter

Oral Health Access Among Older Californians (infographic)

Nadereh Pourat, Maria Ditter

Better Health, Greater Social Cohesion Linked to Voter Participation (policy brief and infographic)

Susan H. Babey, Joelle Wolstein, Shana A. Charles

Serious Psychological Distress on the Rise Among Adults in California (policy brief and infographic)

D. Imelda Padilla-Frausto, Hin Wing Tse, et al.

Voter Participation in California Varies Widely by Type of Election and Voter Race and Ethnicity (fact sheet and infographic)

Susan H. Babey, Joelle Wolstein, Shana A. Charles

Limited Access to Health Data on American Indian and Alaska Natives Impedes Population Health Insights (policy brief and infographic)

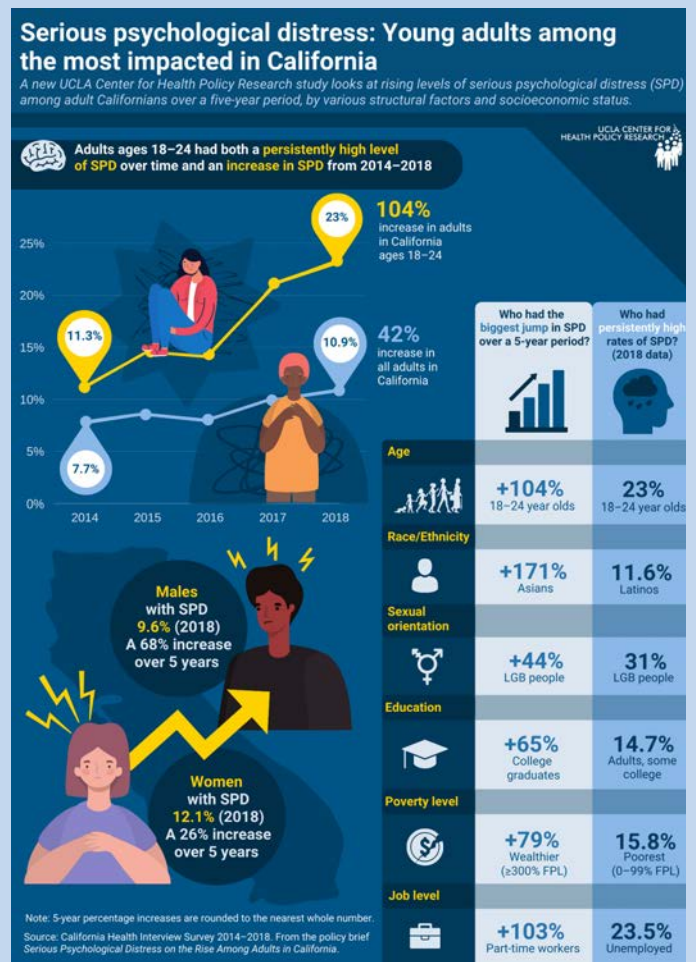
Tara L. Becker, Susan H. Babey, Riti Shimkhada, AJ Scheitler, and Ninez A. Ponce

Income Disparities Widen the Gap in Oral Health of California Adults (policy brief)

Nadereh Pourat, Maria Ditter

Oral Health of Californians Differs by Where They Live (infographic)

Nadereh Pourat, Maria Ditter



JOURNAL ARTICLES THAT CITE CHIS

January 2020

Sport and Physical Activity in Epilepsy: A Systematic Review (Deutsches Arzteblatt International)

Standards-Based Clinical Decision Support Platform to Manage Patients Who Meet Guideline-Based Criteria for Genetic Evaluation of Familial Cancer (JCO Clinical Cancer Informatics)

Impact of Gentrification on Adult Mental Health (Health Services Research)

The Role of the Medicaid Expansion in the Use of Preventive Health Care Services in California Men (American Journal of Men's Health)

Discrimination in Healthcare as a Barrier to Care: Experiences of Socially Disadvantaged Populations in France from a Nationally Representative Survey (BMC Public Health)

February 2020

Association Between Preference for Using Alcohol Beverage-Named E-Liquids and Alcohol Use Among High School Youth (Drug and Alcohol Dependence)

Disentangling individual and neighborhood differences in the intention to quit smoking in Asian American male smokers (Preventive Medicine Reports)

Health Conditions, Outcomes, and Service Access Among Filipino, Vietnamese, Chinese, Japanese, and Korean Adults in California, 2011-2017 (American Journal of Public Health)

Dog Ownership and Walking: Perceived and Audited Walkability and Activity Correlates (International Journal of Environmental Research and Public Health)

March 2020

Obesity and Obesogenic Behaviors in Asian American Children with Immigrant and US-Born Mothers (International Journal of Environmental Research and Public Health)

Measurement Equivalence of the Kessler 6 Psychological Distress Scale for Chinese and Korean Immigrants: Comparison Between Younger and Older Adults (International Journal of Methods in Psychiatric Research)

Increased Mortality in Asians with Systemic Sclerosis in Northern California (ACR Open Rheumatology)

Integration of Tobacco Treatment Services into Cancer Care at Stanford (International Journal of Environmental Research and Public Health)

Neighborhood Environments, SNAP-Ed Eligibility, and Health Behaviors: An Analysis of the California Health Interview Survey (Journal of Urban Health)

April 2020

Assessment of Health Information About COVID-19 Prevention on the Internet: Infodemiological Study (JMIR Public Health and Surveillance)

The Influence of Patient-Provider Communication on Cancer Screenings Differs Among Racial and Ethnic Groups (Preventive Medicine Reports)

The Use of Technology for Communicating with Clinicians or Seeking Health Information in a Multilingual Urban Cohort: Cross-Sectional Survey (Journal of Medical Internet Research)

Online Health Information – Seeking Among Older Women with Chronic Illness: Analysis of the Women's Health Initiative (JMIR Public Health and Surveillance)

JOURNAL ARTICLES

May 2020

Primary Care Access to New Patient Appointments for California Medicaid Enrollees: A Simulated Patient Study (Annals of Family Medicine)

Effectiveness of interventions to identify and manage patients with familial cancer risk in primary care: a systematic review (Journal of Community Genetics)

The Reported Impact of Public Involvement in Biobanks: A Scoping Review (Health Expectations)

Exploring the Provider-Level Socio-Demographic Determinants of Diet Quality of Preschool-Aged Children Attending Family Childcare Homes (Nutrients)

Germline Mutation in MUS81 Resulting in Impaired Protein Stability is Associated with Familial Breast and Thyroid Cancer (Cancers)

Occupying Multiple Stigmatized Identities: Smoking and Unemployment Stigmas Among the Unemployed (SSM – Population Health)

Defining Gentrification for Epidemiologic Research: A Systematic Review (PLoS One)

Association of Patients' Perception of Primary Care Provider Listening with Emergency Department Use (PRiMER)

Effectiveness of Text Message Interventions for Weight Management in Adolescents: Systematic Review (JMIR Mhealth Uhealth)

Ambiguity in Communicating Intensity of Physical Activity: Survey Study (JMIR Public Health and Surveillance)

June 2020

Impact of Age on Patients' Communication and Technology Preferences in the Era of Meaningful Use: Mixed Methods Study (Journal of Medical Internet Research)

Feasibility and Acceptability of a Mobile Mindfulness Meditation Intervention Among Women: Intervention Study (JMIR Mhealth Uhealth)

Food Insecurity and COVID-19: Disparities in Early Effects for US Adults (Nutrients)

Mobile Health for Pediatric Weight Management: Systematic Scoping Review (JMIR Mhealth Uhealth)

Translation and Psychometric Evaluation of the German Version of the Organisational Readiness for Implementing Change Measure (ORIC): A Cross-Sectional Study (BMJ Open)

Psychological Distress among College Students: Role of Food Insecurity and Other Social Determinants of Mental Health (International Journal of Environmental Research and Public Health)

Heterogeneity in the Association of Citizenship Status on Self-Rated Health Among Asians in California (Journal of Immigrant and Minority Health)

Pseudo-Likelihood Based Logistic Regression for Estimating COVID-19 Infection and Case Fatality Rates by Gender, Race, and Age in California (MedRxiv)

JOURNAL ARTICLES

July 2020

The Importance of Health Insurance in Addressing Asian American Disparities in Utilization of Clinical Preventive Services: 12-Year Pooled Data from California (Healthy Equity)

Identifying Optimal Survey-Based Algorithms to Distinguish Diabetes Type Among Adults with Diabetes (Journal of Clinical and Translational Endocrinology)

An Untapped Potential in Primary Care: Semi-Structured Interviews with Clinicians on How Patient Portals Will Work for Caregivers in the Safety Net (Journal of Medical Internet Research)

Association Between Disability and Cardiovascular Event and Mortality: A Nationwide Representative Longitudinal Study in Korea (PLoS One)

A Methodology for Small Area Prevalence Estimation Based on Survey Data (International Journal for Equity in Health)

August 2020

Exploring WHO Communication during the COVID 19 Pandemic through the WHO Website Based on W3C Guidelines: Accessible for All? (International Journal of Environmental Research and Public Health)

Filipino Help-Seeking for Mental Health Problems and Associated Barriers and Facilitators: A Systematic Review (Social Psychiatry and Psychiatric Epidemiology)

Gender Differences in Self-Reported Family History of Cancer: A Review and Secondary Data Analysis (Cancer Medicine)

September 2020

HIV and Sexual Health Services Available to Sexual and Gender Minority Youth Seeking Care at Outpatient Public Mental Health Programs in Two California Counties (Health Equity)

Online Negative Sentiment Towards Mexicans and Hispanics and Impact on Mental Well-being: A Time-Series Analysis of Social Media Data During the 2016 United States Presidential Election (Heliyon)

Health Research in JFEI Over a Decade: 2009–2019 (Journal of Family and Economic Issues)

Racial Discrimination as a Mediator of Racial Disparities in Insomnia Disorder (Sleep Health)

October 2020

Trajectories of Nicotine and Cannabis Vaping and Polyuse From Adolescence to Young Adulthood (JAMA Network Open)

Disparities in the Diagnosis and Treatment of Gastric Cancer in Relation to Disabilities (Clinical and Translational Gastroenterology)

Racial/Ethnic Disparities in Household Food Insecurity During the COVID-19 Pandemic: A Nationally Representative Study (Journal of Racial and Ethnic Health Disparities)

Health-Related Influences of Extending Marital Benefits to Same-Sex Couples: Results from the California Health Interview Survey (Family Relations)

Equal Access to Telemedicine during COVID-19 Pandemic: A Pediatric Otolaryngology Perspective (Laryngoscope)

JOURNAL ARTICLES AND EXTERNAL PUBLICATIONS

The Prevalence and Management of Diabetes Among Vietnamese Americans: A Population-Based Survey of an Understudied Ethnic Group (Chronic Illness)

Risk Factors for Conversion of Hip Arthroscopy to Total Hip Arthroplasty: A Large Closed-Cohort Study (Arthroscopy, Sports Medicine, and Rehabilitation)

Spanish-Speaking Parents' Experiences Accessing Academic Medical Center Care: Barriers, Facilitators and Technology Use (Academic Pediatrics)

The Hunger-Obesity Paradox: Exploring Food Banking System Characteristics and Obesity Inequities Among Food-Insecure Pantry Clients (PLoS One)

Implementing a Multilevel Intervention to Accelerate Colorectal Cancer Screening and Follow-up in Federally Qualified Health Centers Using a Stepped Wedge Design: A Study Protocol (Implementation Science)

Food Insecurity and Healthcare Access, Utilization, and Quality Among Middle and Later Life Adults in California (Journal of Aging and Health)

November 2020

At the Intersection of Precision Medicine and Population Health: An Implementation-Effectiveness Study of Family Health History Based Systematic Risk Assessment in Primary Care (BMC Health Services Research)

December 2020

Centering Health Equity in Population Health Surveys (JAMA Health Forum)

Publications by Local Government Agencies and Other Groups that Use CHIS Data

Improving Health Care Data in California (Public Policy Institute of California)

Vulnerabilities to COVID-19 Among Older LGBT Adults in California (Williams Institute)

Strategic Prevention Plan July 2020-June 2025 – Substance Use Prevention Services (LA County Department of Public Health)

Early Implementation Strategic Plan 2020-2024: A Blueprint for Peace and Healing (Los Angeles County Office of Violence Prevention)

The Report on the Status of Women and Girls in California 2020 (Center for the Advancement of Women at Mount Saint Mary's University)

Orange County Community Indicators 2020-2021 (Orange County Business Council)

How Many in Your Area Are Covered by the Affordable Care Act? (California Health Care Foundation)

Books and Schools that Reference CHIS

Introduction to Survey Sampling by Graham Kalton

The Oxford Handbook of Sexual and Gender Minority Mental Health, edited by Esther D. Rothblum

San Jose State University uses AskCHIS in its **Introduction to Epidemiology** course.

Using CHIS data on mental health, **Ventura County Community College** was awarded a \$500,000 grant to expand student mental health services.

PRESENTATIONS

Conferences and other speaking engagements featuring CHIS data and staff.

2020 Health Datapalooza

February 10-11, 2020 | Washington, DC

Sampling and surveying rare populations: A review with examples from the California Health Interview Survey

Brian Wells

Methodology Matters: Impacts of Sample Design

Tara Becker

The Importance of Racial/Ethnic Data Disaggregation

Ninez A. Ponce

University of Maryland and University of Michigan Joint Program in Survey Methodology Seminar Series

January 29, 2020 | Ann Arbor, MI

Innovating a multi-mode design for a diverse population: Results from two field experiments of the California Health Interview Survey

Brian Wells

USC Annenberg Center for Health Journalism 2020 California Fellowship

March 17, 2020 | Virtual

Health Coverage in California

Ninez A. Ponce

UCLA Fielding School of Public Health Epidemiology COVID-19 Seminar Series

June 3, 2020 | Virtual

Public Health Policy and Data Collection of COVID-19

Ninez A. Ponce

75th Annual American Association for Public Opinion Research (AAPOR) Conference

June 11-12, 2020 | Virtual

The Impact of California Health Interview Survey in Data Disaggregation of Health Data for Asian American, Native Hawaiian and Pacific Islanders (AANHPIs)

Ninez A. Ponce

Impacts of sampling frame and survey mode changes on a follow-on study of immigrants

Brian Wells, Maria-Elena De Trinidad Young, Lei Chen, Steven P. Wallace

The use of incentives to influence parental permission in surveying teenagers

Royce Park, Brian Wells, Todd Hughes, Susan Sherr, Ninez A. Ponce

A performance evaluation of autocoding open survey responses in CHIS 2018

Errol Lopez, Ninez Ponce, YuChing Yang, Todd Hughes



AcademyHealth 2020 Annual Research Meeting

UCLA CHPR Director and CHIS PI Ninez A. Ponce chaired the 2020 conference and gave the opening remarks. Last year, Ponce and CHIS won the Health Services Research (HSR) Impact Award, which recognizes research that has had a significant impact on health and health care.

PRESENTATIONS

AcademyHealth 2020 Annual Research Meeting (ARM)

July 28–August 6, 2020 | Virtual

[Impact of English Language Proficiency on Cardiovascular Disease Outcomes](#)

[An Analysis of Six Determinants That Influence General Health Status for Adults in the Golden State](#)

[Health and Political Participation: Results from the 2016 Election in California](#)

Power in Unity: Achieving Racial and Health Equity in the COVID Era Conference

September 29, 2020 | Virtual

[The Data Disaggregation Imperative to Achieve Health Equity](#) (keynote address)
Ninez A. Ponce (Data Equity Award winner)

State Health Access Data Assistance Center (SHADAC) Webinar

October 13, 2020 | Virtual

[From Telephone to Multi-mode Surveys: State Case Studies and Conversations](#)

Todd Hughes

2020 American Public Health Association (APHA) Annual Meeting and Expo

October 24–28, 2020 | Virtual

[The Changing Landscape: Cigarette, E-Cigarette and Marijuana Smoking Among Young Adults in California](#)

Ninez A. Ponce, Ying-Ying Meng

[Public Support for All-Inclusive Smokefree Multi-Unit Housing Policy Including Marijuana and Vaping](#)

Peggy Toy, Ying-Ying Meng, et al.

[Rising Prevalence of Tobacco Use Among California's Latino and Asian Populations](#)

[The Relationship Between Social Determinants of Health and Chronic Disease Prevalence Among an Ethnically Diverse Sample of U.S. Adults](#)

[Disparities in Telehealth Use Among Patients with Limited English Proficiency: California Health Interview Survey, 2015-2018](#)

[Development of the Health Atlas: Health Outcomes Among Asian Americans, Native Hawaiian/Pacific Islanders, and Other Racial/Ethnic Groups](#)

[Assessing the Quality of Health Care Received by Food Insecure Older Adults](#)

[Is Type 2 Diabetes a Risk Factor for Psychological Distress Among Foreign-Born Asian Americans in California?](#)

[Social Determinants of Self-Reported Oral Health: A Path Analysis](#)

UCLA Asian American Studies Center Seminar Series

November 13, 2020 | Virtual

[Pandemics and Vulnerable Communities](#)
Ninez A. Ponce

Centers for Disease Control and Prevention (CDC) Webinar

November 16, 2020 | Virtual

[Improving Data Capacity for American Indians/Alaska Natives](#)
Ninez A. Ponce

WHAT'S NEW IN CHIS 2019–2020?

SAMPLING AND DATA COLLECTION REDESIGN

CHIS has employed random-digit-dial sampling and telephone interviewing since its inception, but industry declines in telephone interview response rates, along with cultural shifts in telephone usage, motivated exploring alternative sampling and data collection methodologies for CHIS moving forward. Following extensive experimentation and research, CHIS transitioned to a mixed-mode survey (web and telephone) using a random sample of California addresses for 2019–2020.

Using both web and telephone data collection methods, CHIS continues to collect data for adults, children (ages 0–11), and adolescents (ages 12–17). The web survey was available in five languages: English, Spanish, Chinese, Korean, and Vietnamese. Trained interviewers were available to conduct the survey over the telephone in all five languages as well as Tagalog.

You can learn more about the CHIS redesign process in [CHIS 2019-2020 Redesign: Rationale, Empirical Evaluation, and Trends](#).

NEW AND UPDATED SURVEY QUESTIONS

Survey questions are added, removed, and modified in each two-year cycle of CHIS to meet stakeholders' needs and monitor emerging public health concerns. Questions are removed from the interview to reduce its length and save data collection costs when topics are no longer relevant for public health surveillance, or when sponsor funding is no longer available. Most CHIS questions remain in the interview across multiple CHIS cycles. For CHIS 2019–2020 approximately 80% of the content continued from CHIS 2018.

Occasionally, changes to question wording are made based on methodological evaluations or when user feedback strongly suggests that changes will produce better data. Otherwise, questions are consistent across years to aid in trending and pooling. Reinstated questions were asked in cycles prior to 2017–2018, and again in 2019–2020.

A full list of topics in CHIS 2019–2020 are available on the [CHIS Survey Topics page](#). The full CHIS 2019 and 2020 questionnaires are available on the [CHIS Questionnaires page](#).

40+

questionnaire topics added to
CHIS 2019–2020

90%

of adult surveys completed on the
web, and 10% over the phone

26,016

number of people interviewed for
CHIS 2019

NOTEWORTHY ADDITIONS TO CHIS 2019–2020

NEW ADULT QUESTIONNAIRE TOPICS IN 2019–2020

- Perception of physical and environmental factors affecting health¹
- Prescription painkiller (opioid) and alcohol² or benzodiazepine³ co-use
- Recent use of methamphetamines²
- Misuse of prescription stimulants²
- Frequency of internet and social media use^{1,2}
- Use of internet for mental health services²
- Recent employment termination¹
- VA service-connected disability rating²
- Recent experience with financial crisis¹
- Tele-medical care/health at a health facility^{1,2}
- Community-based services at health care provider's office^{1,2}
- Sexual violence^{2,3}
- Long-term services and support¹
- Medi-Cal renewal process^{1,2}
- Public program participation (public charge)³
- Birth control counseling and prescriptions^{1,3}
- Civic engagement and involvement^{1,2}
- Reinstated content: Hemoglobin A1c testing for diabetics¹
- Activities of daily living/disability status^{1,2}
- UCLA 3-item Loneliness scale^{1,2}

¹ Available in Public Use Files (PUFs)

² Available through AskCHIS™ (ask.chis.ucla.edu)

³ Confidential data only available through the Data Access Center (DAC). For more information, visit the [DAC webpage](#).

⁴ Preliminary 2020 COVID-19 estimates available on UCLA CHPR's 2020 CHIS COVID-19 Preliminary Estimates Dashboard

⁵ CHIS 2020 data and estimates will be available in the fall of 2021

NEW ADULT QUESTIONNAIRE TOPICS IN 2020

- Coronavirus (COVID-19) symptoms, testing, and impacts on work and family^{1,5}
- Planned Parenthood utilization⁵

NEW CHILD QUESTIONNAIRE TOPICS IN 2019–2020

- Activities of daily living/disability status^{1,3}
- Child development assessment^{1,2}

Reinstated content:

- Personal doctor¹
- Care coordination¹
- Soda consumption^{1,2}
- Dental health and dental insurance^{1,3}

NEW ADOLESCENT QUESTIONNAIRE TOPICS IN 2019–2020

- Gender identity²
- Transition to adult health care services^{1,2}
- Frequency and reason for current e-cigarette use^{1,2,3}
- Age of first cigarette/e-cigarette use^{1,3}
- Frequency of internet and social media use^{1,2}
- Use of internet for mental health services²
- Birth control counseling and prescriptions³
- Reinstated content:
 - + Health care utilization due to asthma³
 - + Soda consumption^{1,2}
 - + Civic engagement and participation^{1,2}

NEW ADOLESCENT QUESTIONNAIRE TOPICS IN 2020

- Attitudes towards voting⁵

WHAT'S NEW IN CHIS 2019–2020?

...continued

TARGETING THROUGH PREDICTIVE MODELING

CHIS 2019–2020 introduced a new data science procedure to help target specific, commonly underrepresented demographic groups. CHIS specifically targeted Asian households including Korean and Vietnamese, Latino and Spanish-speaking households, those with low educational attainment, non-citizens, and households with children under 19.

For more details on the predictive modeling, see [CHIS 2019 Methodology Report 1 – Sample Design](#).

REGIONAL OVERSAMPLES

CHIS 2019–2020 saw an oversample in San Diego County thanks to funds provided by the County of San Diego Health and Human Services Agency.

DATA COLLECTION TIMELINE

CHIS 2019–2020 data were collected between September 2019 and November 2020. Approximately 90% of adult interviews were completed over the web with the remainder over the phone.

Given the transition to primarily web data collection, some variables may observe differences in distribution due to changes in sample composition because of the new mode, as well as differences in stimulus (aural vs. visual).

Changes in trends from previous cycles and CHIS 2019–2020 should be interpreted with caution. For more context on understanding the impacts of the redesign on year-to-year trending, see [CHIS 2019–2020 Redesign: Rationale, Empirical Evaluation, and Trends](#).

For small populations or rare conditions and characteristics, pooling two or more single-year datasets may be required to achieve sufficient sample size and statistical stability. Users who need more information about pooling or trending data over time should review the [Analyze CHIS Data website](#) or go to the [CHIS FAQs page](#). You can also email questions to dacchpr@ucla.edu.

“

"CHIS' capacity to provide local, district, and statewide data allows Health Access members to **move seamlessly between discussions with county health officials, state legislators, and congressional members** sharing customized, compelling evidence."

—**Anthony E. Wright**
Executive Director
Health Access

”



CHIS 2019 DATA RELEASE

The 2019 California Health Interview Survey data release on Thursday, October 29, 2020, reached thousands of people across the globe from social media to news outlets.

271
PEOPLE

attended the 2019 CHIS data release virtually from organizations including the Centers for Disease Control and Prevention, California Health Care Foundation, California and Los Angeles County Departments of Public Health, and more.

17+
MEDIA OUTLETS

featured the CHIS 2019 release including KNBC-TV Online, KABC-TV Online, Mirage News Australia, and much more with a potential traffic of more than 14 million.

12,910
TWITTER IMPRESSIONS

and 309 Twitter engagements, plus more than 2,000 people reached on Facebook.

CHIS MAKES HEADLINES

From the disproportionate impact COVID-19 has had on racial and ethnic groups to voter participation and so much more, CHIS made major news in 2020.

120+
media hits in 2020

“

“We must answer the question: ‘What works and what doesn’t to reduce gun violence?’ Studies like Dr. Ponce and Dr. Rodriguez’s fill a critical gap in our understanding of gun violence and how to prevent it.”

Andrew Morral, director of the National Collaborative on Gun Violence Research, announcing a \$596,171 grant to fund a firearms module in the 2021 and 2022 CHIS to advance knowledge on gun violence related to youth/young adults, veterans, immigrants, and LGBT people. The award was featured in Philanthropy News Digest.

”

Some of the 120+ news stories include:

NBC

[New study reveals previously invisible health issues among Asians in U.S](#)

ABC-7

[Survey: 10 million eligible CA voters don't vote or only vote occasionally](#)

ABC-3

[Mental Health Book Kits now available at Paso Robles City Library](#)

NBC Los Angeles

[Black and Latinos' Finances Hit the Hardest by COVID-19, UCLA Survey Finds](#)

Univision

[Los alcances de la reactivación de la regla de carga pública para todos los trámites, incluida la residencia](#)

KTVU-TV

[Seniors facing hunger see improved CalFresh, expanded local aid](#)

KPCC

[The healthier you are the more likely you are to vote](#)

Washington Post

[Coronavirus update: California surpasses 10000 deaths as Trump signs economic relief orders](#)

U.S. News & World Report

[Marijuana, E-Cigarettes Enticing More Young Adults](#)

Sacramento Bee

[Latinos are more likely to get COVID-19 and diabetes. What does the combination mean for health?](#)

The Guardian

'They feel invincible': how California's coronavirus plan went wrong

CalMatters

Why is the coronavirus deadly for so many blacks in Los Angeles?

San Diego Union-Tribune

Insist on better U.S. nutrition guidelines or Latinos will keep bearing the brunt of health crises

Sacramento Bee

More than 1,000 reports of anti-Asian racism in California since March, data show

Sierra Sun Times

COVID-19 More Likely to Impact Smokers and People Exposed to Secondhand Smoke, Report Finds

North Coast Journal

Newsom's Promise to Immediately Feed Seniors Hasn't Yet Delivered

Times of San Diego

Study: Citizens in Good Health, Living in Safer Neighborhoods More Likely To Vote

Los Angeles Wave Newspapers

Blacks face greater risk from COVID-19, health experts say.

Bay Area Reporter

Editorial: More evidence SOGI data is needed

Becker's Dental Review

Significant oral health access disparities affect low-income Californians, study finds

Rafu Shimpo

UCLA Health Survey: Whether Californians Vote May Hinge on Race, Ethnicity.

Vida Newspaper

Latinos Who Consistently Use Social Media Are More Prone to Distress

LA Watts Times

UCLA: Racial and Ethnic Groups' Finances Hit Hardest by COVID-19

— “

“In a pandemic, we are all at risk, and denying health care to sectors of the population that lack medical coverage damages us all.”

Ninez A. Ponce in Público

” —

“

“Lack of access to health care and also with that, a disproportionate burden of some chronic conditions for communities of color, that's getting exacerbated, or spun out more in places like Los Angeles.”

”

**Ninez A. Ponce in
The Wall Street Journal**

We thank you for your ongoing support of the California Health Interview Survey!

Funders

The Archstone Foundation

Aurrera Health Group

California Department of Health Care
Services

California Department of Health Care
Services, Mental Health Services Division

California Department of Public Health

California Department of Public Health,
California Tobacco Control Program

The California Endowment

California Health Benefit Exchange
(Covered California)

California Health Care Foundation

California Mental Health Services
Authority

The California Wellness Foundation

Cedars-Sinai

First 5 California

Kaiser Permanente

National Collaborative on Gun Violence
Research

National Institutes of Health Community
Engagement Alliance Against COVID-19
Disparities

San Diego County Health and Human
Services Agency



california
health
interview
survey

UCLA CENTER FOR
HEALTH POLICY RESEARCH



healthpolicy.ucla.edu