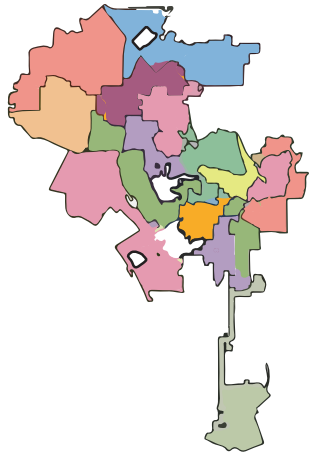


SMOKEFREE MULTI-UNIT HOUSING PROFILE

CITY OF LOS ANGELES*

BASED ON SURVEY RESPONSES FROM TENANTS & OWNERS

MULTI-UNIT HOUSING INCLUDES APARTMENTS, DUPLEX, TRIPLEXES WHERE UNITS ARE NEXT TO EACH OTHER SHARING A COMMON WALL



TOTAL HOUSING UNITS¹
1,447,025



MULTI-UNIT HOUSING
61%

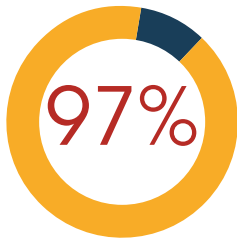


7 in 10

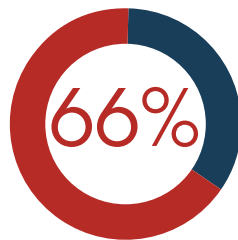
DISTRICT TENANTS SUPPORT SMOKEFREE LAWS IN ALL PROPERTIES²



TENANTS SUPPORT SMOKEFREE HOUSING POLICIES²

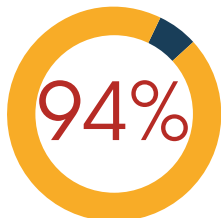


Of **tenants** surveyed supported smokefree policies in new buildings.

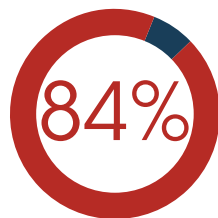


Of **tenants** surveyed supported smokefree policies in old buildings.

OWNERS SUPPORT SMOKEFREE HOUSING POLICIES³



Of **owners** with self-imposed smokefree policies support policies.



Of **owners** without self-imposed smokefree policies support policies.

TENANTS REPORTED EXPOSURE TO SECONDHAND SMOKE²

WITHIN MULTI-UNIT HOUSING:



1 in 2

Tenants reported exposure to secondhand smoke.



1 in 2

Tenants living with children reported exposure to secondhand smoke in their home.



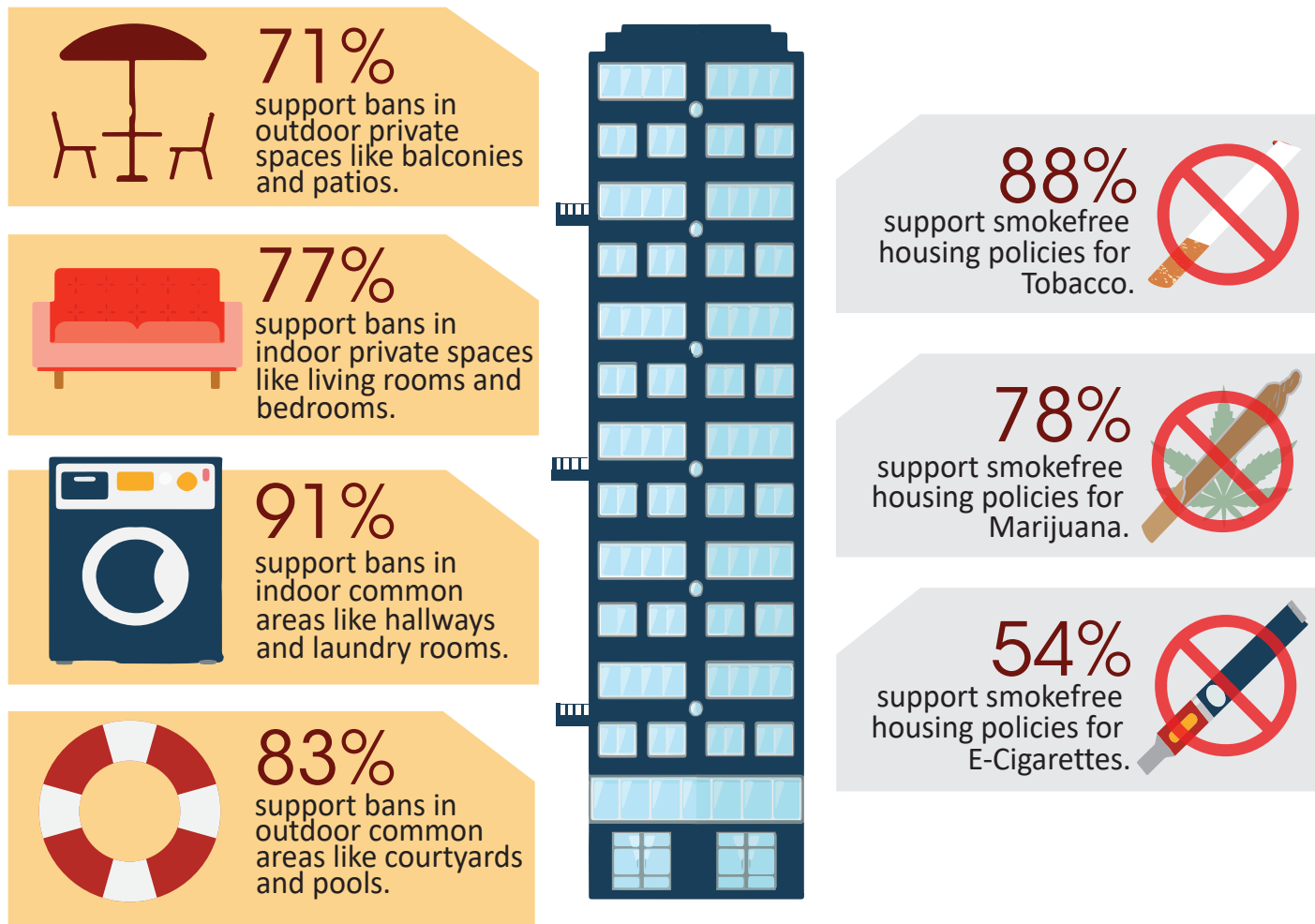
3 in 5

Tenants who have or live with someone who has a chronic condition reported exposure to secondhand smoke in their home.

7 in 10

Of these respondents reported that secondhand smoke worsened the chronic health condition.

BREAKDOWN OF TENANT SUPPORT FOR SMOKEFREE HOUSING POLICIES³



AMONG THE TENANTS EXPOSED TO SECONDHAND SMOKE²

79% were exposed to Tobacco smoke.

74% were exposed to Marijuana smoke.

18% were exposed to E-Cigarette vapor.

ABOUT THE SMOKEFREE MULTI-UNIT HOUSING PROJECT

The UCLA Center for Health Policy Research in partnership with the Los Angeles County Department of Public Health evaluates smokefree multi-unit housing throughout the City of Los Angeles. The Evaluation assesses exposure to secondhand smoke in multi-unit housing, knowledge of the harms of secondhand smoke, and the level of support for protections against secondhand smoke exposure in multi-unit housing. This report includes data from surveys conducted in 12 City Council Districts in 2019. Council Districts 8, 9, 10 were surveyed previously in a 2015 CDC supported study. The report is available from the Center at <http://healthpolicy.ucla.edu/publications/search/pages/detail.aspx?PubID=1484>.

Project Partners: Apartment Association of Greater Los Angeles, Fame Corporations, Day One, and Koreatown Youth Community Center.

© 2019. California Department of Public Health. Funded under contract #CTCP-17-19.

REFERENCES

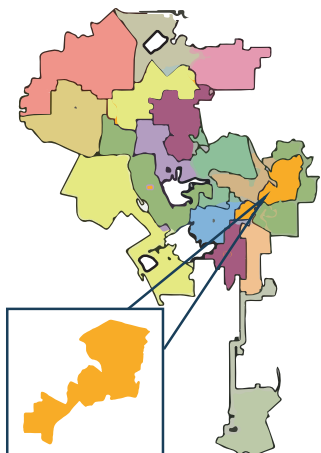
1. 2010 U.S. Census Data and 2016 American Community Survey
2. 2016 UCLA Center for Health Policy Research and CDC SFMUH Project Tenant Survey Data from 985 Respondents
3. 2019 UCLA Center for Health Policy Research and LADPH SFMUH Project Owner Survey Data from 145 Respondents

SMOKEFREE MULTI-UNIT HOUSING PROFILE

COUNCIL DISTRICT 1

BASED ON SURVEY RESPONSES FROM TENANTS & OWNERS

MULTI-UNIT HOUSING INCLUDES APARTMENTS, DUPLEX, TRIPLEXES WHERE UNITS ARE NEXT TO EACH OTHER SHARING A COMMON WALL



TOTAL HOUSING UNITS¹

88,931



MULTI-UNIT HOUSING

77%



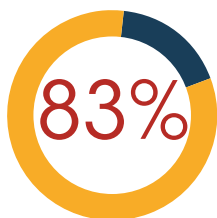
3 in 4

DISTRICT TENANTS SUPPORT SMOKEFREE POLICIES IN ALL PROPERTIES²

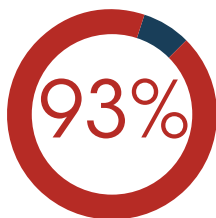


DISTRICT TENANTS

SUPPORT SMOKEFREE HOUSING POLICIES²



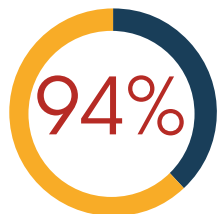
Of tenants surveyed supported smokefree policies in new buildings.



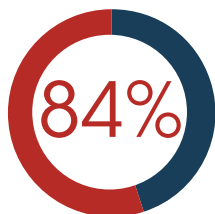
Of tenants surveyed supported smokefree policies in old buildings.

OWNERS IN THE CITY OF LA

SUPPORT SMOKEFREE HOUSING POLICIES³



Of owners with self-imposed smokefree policies support policies.



Of owners without self-imposed smokefree policies support policies.

DISTRICT TENANTS

REPORTED EXPOSURE TO SECONDHAND SMOKE²

WITHIN MULTI-UNIT HOUSING:



1 in 5

Tenants reported exposure to secondhand smoke.



3 in 5

Tenants living with children reported exposure to secondhand smoke in their home.



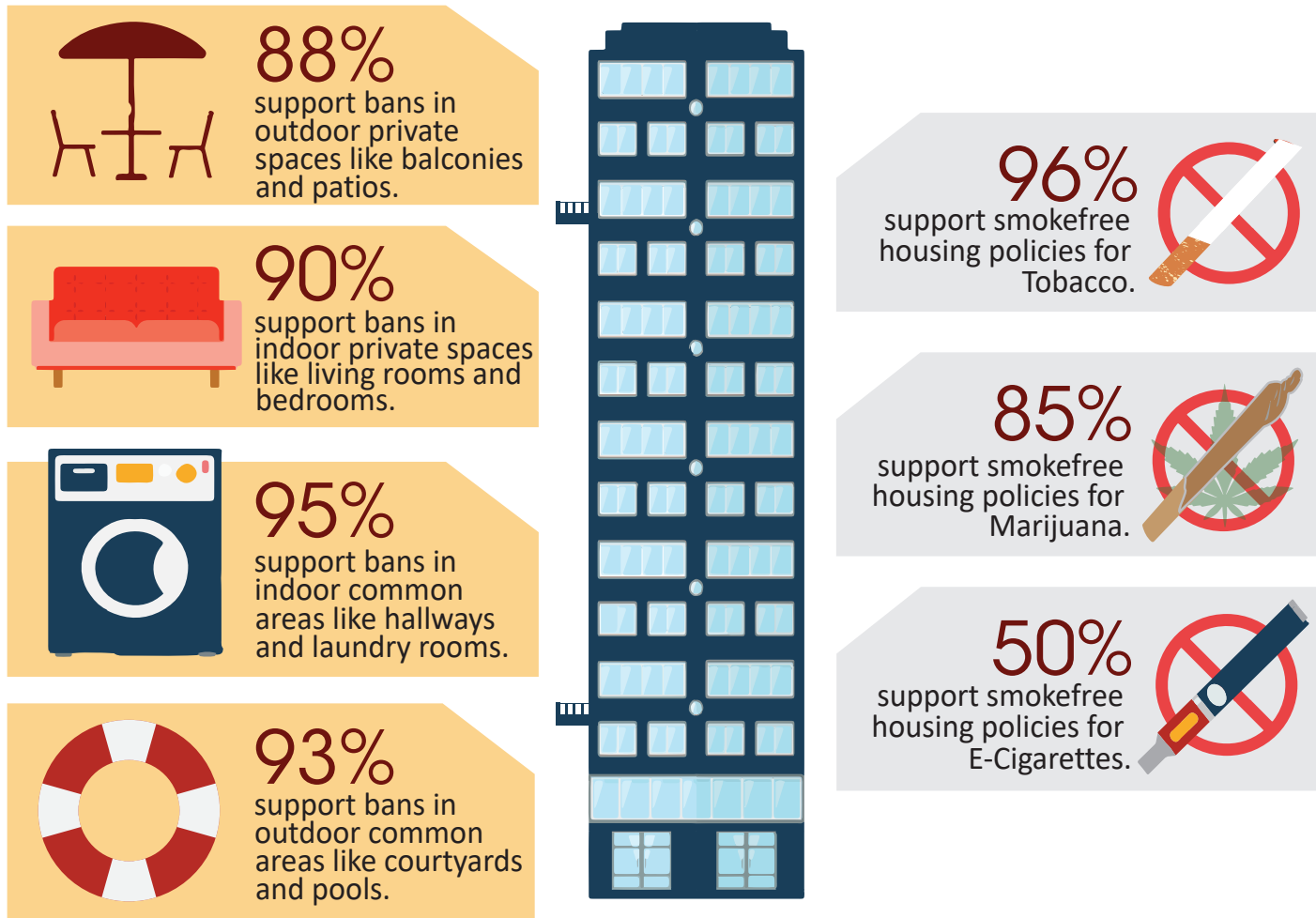
3 in 5

Tenants who have or live with someone who has a chronic condition reported exposure to secondhand smoke in their home.

2 in 5

Of these respondents reported that secondhand smoke worsened the chronic health condition.

BREAKDOWN OF TENANT SUPPORT FOR SMOKEFREE HOUSING POLICIES³



AMONG THE TENANTS EXPOSED TO SECONDHAND SMOKE²

81% were exposed to Tobacco smoke.

75% were exposed to Marijuana smoke.

15% were exposed to E-Cigarette vapor.

ABOUT THE SMOKEFREE MULTI-UNIT HOUSING PROJECT

The UCLA Center for Health Policy Research in partnership with the Los Angeles County Department of Public Health evaluates smokefree multi-unit housing throughout the City of Los Angeles. The evaluation assesses exposure to secondhand smoke in multi-unit housing, knowledge of the harms of secondhand smoke, and the level of support for protections against secondhand smoke exposure in multi-unit housing. Project Partners: Apartment Association of Greater Los Angeles, Fame Corporations, Day One, and Koreatown Youth Community Center.

© 2019. California Department of Public Health. Funded under contract #CTCP-17-19.

REFERENCES

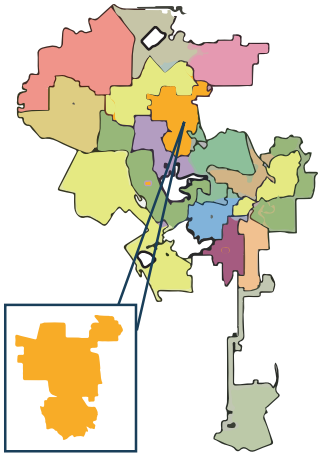
1. 2010 U.S. Census Data and 2016 American Community Survey
2. 2019 UCLA Center for Health Policy Research and LADPH SFMUH Project Tenant Survey Data from 409 Respondents
3. 2019 UCLA Center for Health Policy Research and LADPH SFMUH Project Owner Survey Data from 145 Respondents

SMOKEFREE MULTI-UNIT HOUSING PROFILE

COUNCIL DISTRICT 2

BASED ON SURVEY RESPONSES FROM TENANTS & OWNERS

MULTI-UNIT HOUSING INCLUDES APARTMENTS, DUPLEX, TRIPLEXES WHERE UNITS ARE NEXT TO EACH OTHER SHARING A COMMON WALL



TOTAL HOUSING UNITS¹
103,292



MULTI-UNIT HOUSING
65%

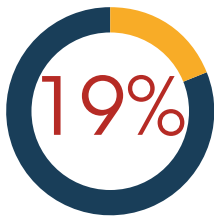


7 in 10

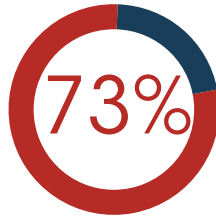
DISTRICT TENANTS SUPPORT SMOKEFREE POLICIES IN ALL PROPERTIES²



DISTRICT TENANTS SUPPORT SMOKEFREE HOUSING POLICIES²



Of **tenants** surveyed supported smokefree policies in new buildings.

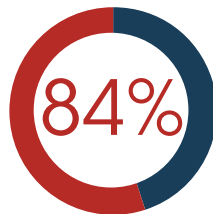


Of **tenants** surveyed supported smokefree policies in old buildings.

OWNERS IN THE CITY OF LA SUPPORT SMOKEFREE HOUSING POLICIES³



Of **owners** with self-imposed smokefree policies support policies.



Of **owners** without self-imposed smokefree policies support policies.

DISTRICT TENANTS REPORTED EXPOSURE TO SECONDHAND SMOKE²

WITHIN MULTI-UNIT HOUSING:



2 in 5

Tenants reported exposure to secondhand smoke.



1 in 2

Tenants living with children reported exposure to secondhand smoke in their home.



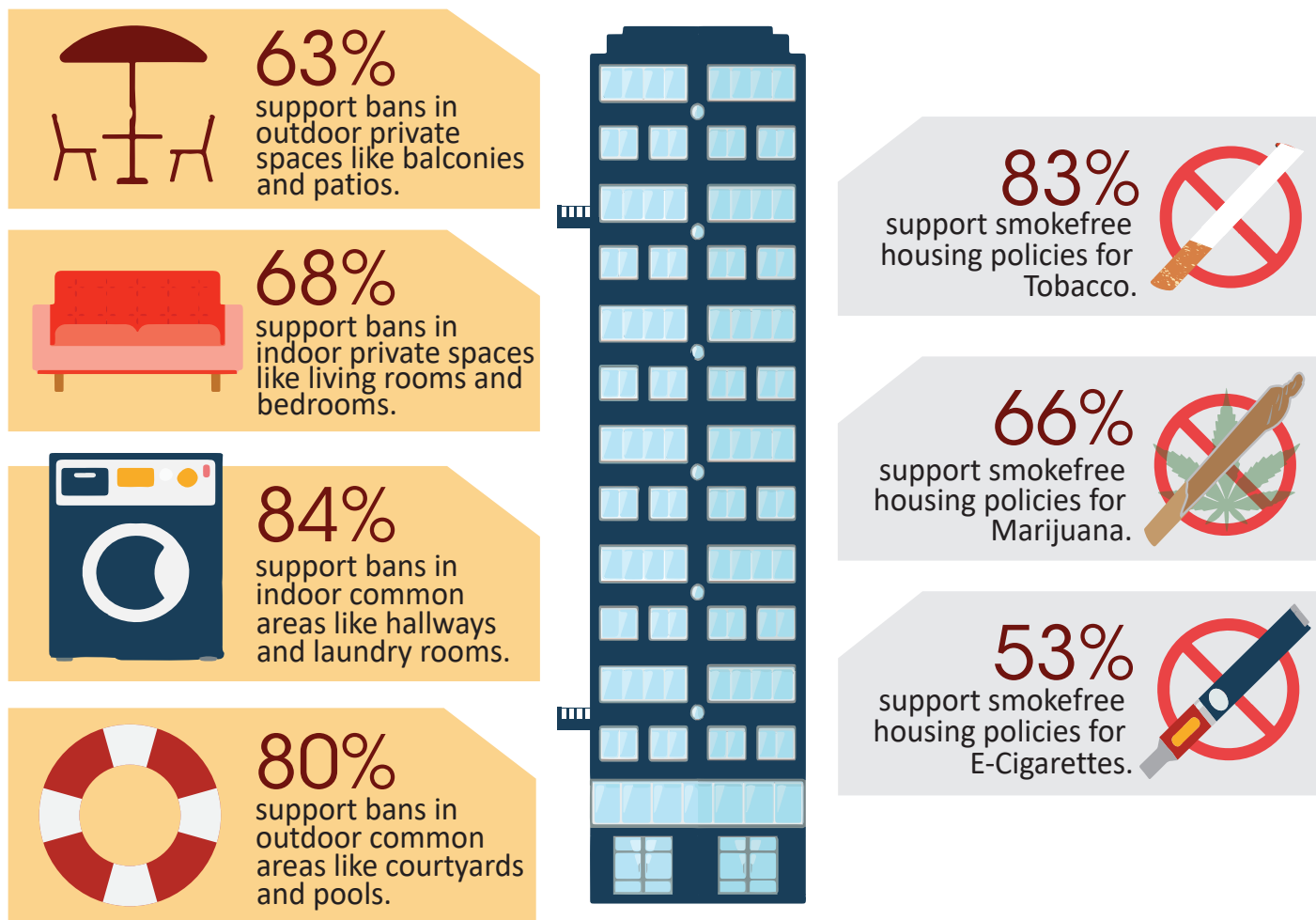
2 in 5

Tenants who have or live with someone who has a chronic condition reported exposure to secondhand smoke in their home.

2 in 5

Of these respondents reported that secondhand smoke worsened the chronic health condition.

BREAKDOWN OF TENANT SUPPORT FOR SMOKEFREE HOUSING POLICIES³



AMONG THE TENANTS EXPOSED TO SECONDHAND SMOKE²

87% were exposed to Tobacco smoke.

62% were exposed to Marijuana smoke.

23% were exposed to E-Cigarette vapor.

ABOUT THE SMOKEFREE MULTI-UNIT HOUSING PROJECT

The UCLA Center for Health Policy Research in partnership with the Los Angeles County Department of Public Health evaluates smokefree multi-unit housing throughout the City of Los Angeles. The evaluation assesses exposure to secondhand smoke in multi-unit housing, knowledge of the harms of secondhand smoke, and the level of support for protections against secondhand smoke exposure in multi-unit housing. Project Partners: Apartment Association of Greater Los Angeles, Fame Corporations, Day One, and Koreatown Youth Community Center.

© 2019. California Department of Public Health. Funded under contract #CTCP-17-19.

REFERENCES

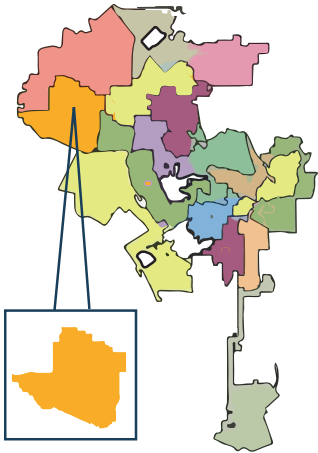
1. 2010 U.S. Census Data and 2016 American Community Survey
2. 2019 UCLA Center for Health Policy Research and LADPH SFMUH Project Tenant Survey Data from 409 Respondents
3. 2019 UCLA Center for Health Policy Research and LADPH SFMUH Project Owner Survey Data from 145 Respondents

SMOKEFREE MULTI-UNIT HOUSING PROFILE

COUNCIL DISTRICT 3

BASED ON SURVEY RESPONSES FROM TENANTS & OWNERS

MULTI-UNIT HOUSING INCLUDES APARTMENTS, DUPLEX, TRIPLEXES WHERE UNITS ARE NEXT TO EACH OTHER SHARING A COMMON WALL



TOTAL HOUSING UNITS¹
99,247



MULTI-UNIT HOUSING
50%



3 in 5

DISTRICT TENANTS SUPPORT SMOKEFREE POLICIES IN ALL PROPERTIES²

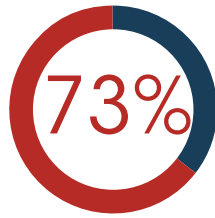


DISTRICT TENANTS

SUPPORT SMOKEFREE HOUSING POLICIES²



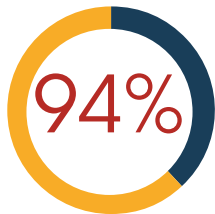
Of **tenants** surveyed supported smokefree policies in new buildings.



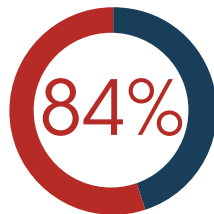
Of **tenants** surveyed supported smokefree policies in old buildings.

OWNERS IN THE CITY OF LA

SUPPORT SMOKEFREE HOUSING POLICIES³



Of **owners** with self-imposed smokefree policies support policies.



Of **owners** without self-imposed smokefree policies support policies.

DISTRICT TENANTS

REPORTED EXPOSURE TO SECONDHAND SMOKE²

WITHIN MULTI-UNIT HOUSING:



1 in 2

Tenants reported exposure to secondhand smoke.



1 in 2

Tenants living with children reported exposure to secondhand smoke in their home.



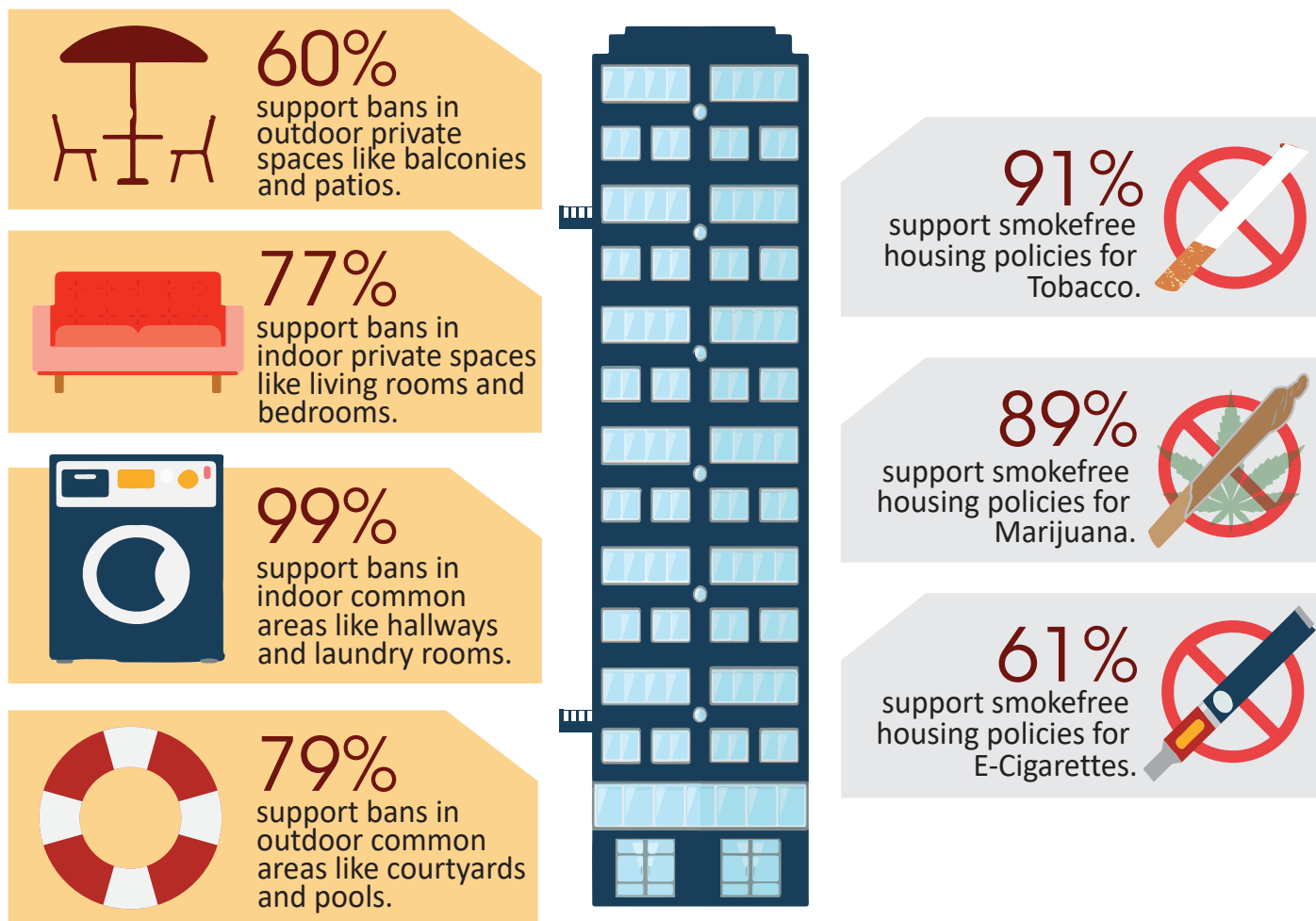
3 in 5

Tenants who have or live with someone who has a chronic condition reported exposure to secondhand smoke in their home.

4 in 5

Of these respondents reported that secondhand smoke worsened the chronic health condition.

BREAKDOWN OF TENANT SUPPORT FOR SMOKEFREE HOUSING POLICIES³



AMONG THE TENANTS EXPOSED TO SECONDHAND SMOKE²

75% were exposed to Tobacco smoke.

88% were exposed to Marijuana smoke.

11% were exposed to E-Cigarette vapor.

ABOUT THE SMOKEFREE MULTI-UNIT HOUSING PROJECT

The UCLA Center for Health Policy Research in partnership with the Los Angeles County Department of Public Health evaluates smokefree multi-unit housing throughout the City of Los Angeles. The evaluation assesses exposure to secondhand smoke in multi-unit housing, knowledge of the harms of secondhand smoke, and the level of support for protections against secondhand smoke exposure in multi-unit housing. Project Partners: Apartment of Greater Los Angeles, Fame Corporations, Day One, and Koreatown Youth Community Center.

© 2019. California Department of Public Health. Funded under contract #CTCP-17-19.

REFERENCES

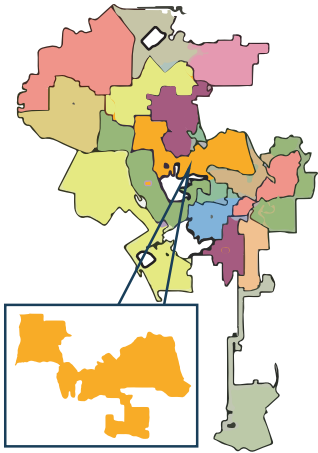
1. 2010 U.S. Census Data and 2016 American Community Survey
2. 2019 UCLA Center for Health Policy Research and LADPH SFMUH Project Tenant Survey Data from 409 Respondents
3. 2019 UCLA Center for Health Policy Research and LADPH SFMUH Project Owner Survey Data from 145 Respondents

SMOKEFREE MULTI-UNIT HOUSING PROFILE

COUNCIL DISTRICT 4

BASED ON SURVEY RESPONSES FROM TENANTS & OWNERS

MULTI-UNIT HOUSING INCLUDES APARTMENTS, DUPLEX, TRIPLEXES WHERE UNITS ARE NEXT TO EACH OTHER SHARING A COMMON WALL



TOTAL HOUSING UNITS¹
133,379



MULTI-UNIT HOUSING
68%



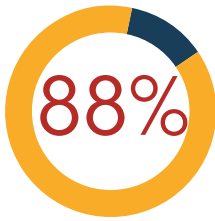
3 in 4

DISTRICT TENANTS SUPPORT SMOKEFREE POLICIES IN ALL PROPERTIES²

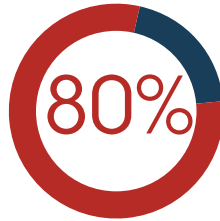


DISTRICT TENANTS

SUPPORT SMOKEFREE HOUSING POLICIES²



Of tenants surveyed supported smokefree policies in new buildings.



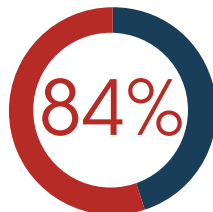
Of tenants surveyed supported smokefree policies in old buildings.

OWNERS IN THE CITY OF LA

SUPPORT SMOKEFREE HOUSING POLICIES³



Of owners with self-imposed smokefree policies support policies.



Of owners without self-imposed smokefree policies support policies.

DISTRICT TENANTS

REPORTED EXPOSURE TO SECONDHAND SMOKE²

WITHIN MULTI-UNIT HOUSING:



1 in 2

Tenants reported exposure to secondhand smoke.



3 in 5

Tenants living with children reported exposure to secondhand smoke in their home.



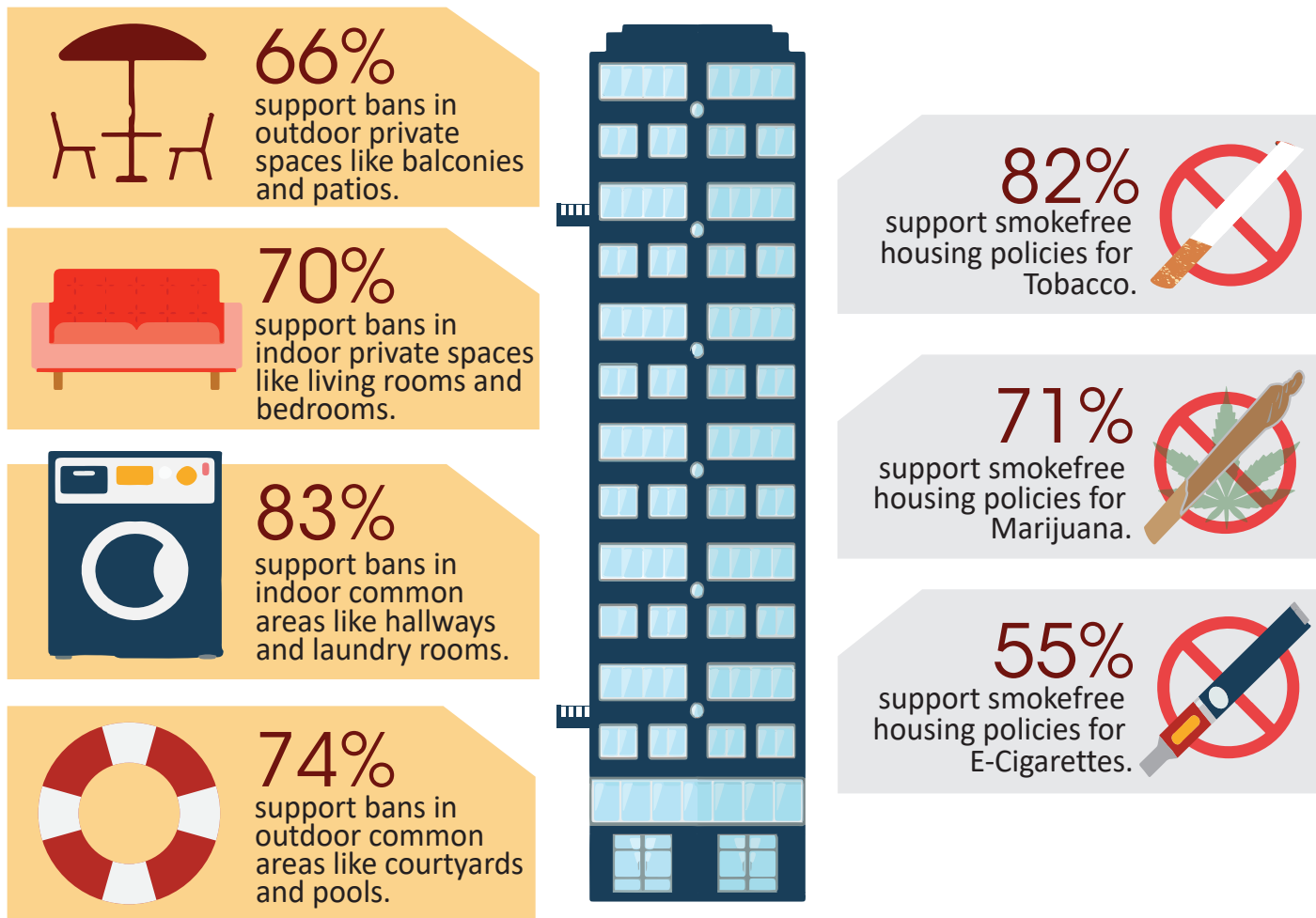
1 in 2

Tenants who have or live with someone who has a chronic condition reported exposure to secondhand smoke in their home.

7 in 10

Of these respondents reported that secondhand smoke worsened the chronic health condition.

BREAKDOWN OF TENANT SUPPORT FOR SMOKEFREE HOUSING POLICIES³



AMONG THE TENANTS EXPOSED TO SECONDHAND SMOKE²

83% were exposed to Tobacco smoke.

63% were exposed to Marijuana smoke.

21% were exposed to E-Cigarette vapor.

ABOUT THE SMOKEFREE MULTI-UNIT HOUSING PROJECT

The UCLA Center for Health Policy Research in partnership with the Los Angeles County Department of Public Health evaluates smokefree multi-unit housing throughout the City of Los Angeles. The evaluation assesses exposure to secondhand smoke in multi-unit housing, knowledge of the harms of secondhand smoke, and the level of support for protections against secondhand smoke exposure in multi-unit housing. Project Partners: Apartment Association of Greater Los Angeles, Fame Corporations, Day One, and Koreatown Youth Community Center.

© 2019. California Department of Public Health. Funded under contract #CTCP-17-19.

REFERENCES

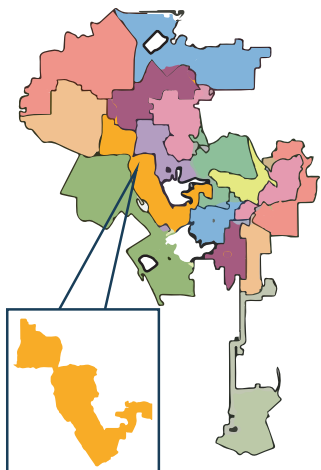
1. 2010 U.S. Census Data and 2016 American Community Survey
2. 2019 UCLA Center for Health Policy Research and LADPH SFMUH Project Tenant Survey Data from 409 Respondents
3. 2019 UCLA Center for Health Policy Research and LADPH SFMUH Project Owner Survey Data from 145 Respondents

SMOKEFREE MULTI-UNIT HOUSING PROFILE

COUNCIL DISTRICT 5

BASED ON SURVEY RESPONSES FROM TENANTS & OWNERS

MULTI-UNIT HOUSING INCLUDES APARTMENTS, DUPLEX, TRIPLEXES WHERE UNITS ARE NEXT TO EACH OTHER SHARING A COMMON WALL



TOTAL HOUSING UNITS¹
122,302



MULTI-UNIT HOUSING
30%



4 in 5

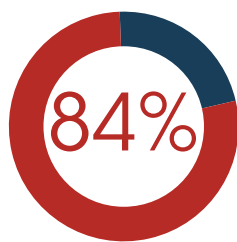
DISTRICT TENANTS SUPPORT SMOKEFREE LAWS IN ALL PROPERTIES²



DISTRICT TENANTS SUPPORT SMOKEFREE HOUSING POLICIES²

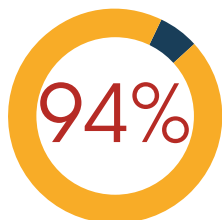


Of **tenants** surveyed supported smokefree policies in new buildings.

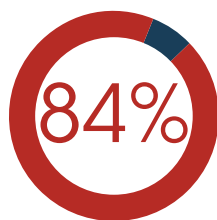


Of **tenants** surveyed supported smokefree policies in old buildings.

OWNERS IN THE CITY OF LA SUPPORT SMOKEFREE HOUSING POLICIES³



Of **owners** with self-imposed smokefree policies support policies.



Of **owners** without self-imposed smokefree policies support policies.

DISTRICT TENANTS REPORTED EXPOSURE TO SECONDHAND SMOKE²

WITHIN MULTI-UNIT HOUSING:



1 in 2

Tenants reported exposure to secondhand smoke.



1 in 2

Tenants living with children reported exposure to secondhand smoke in their home.



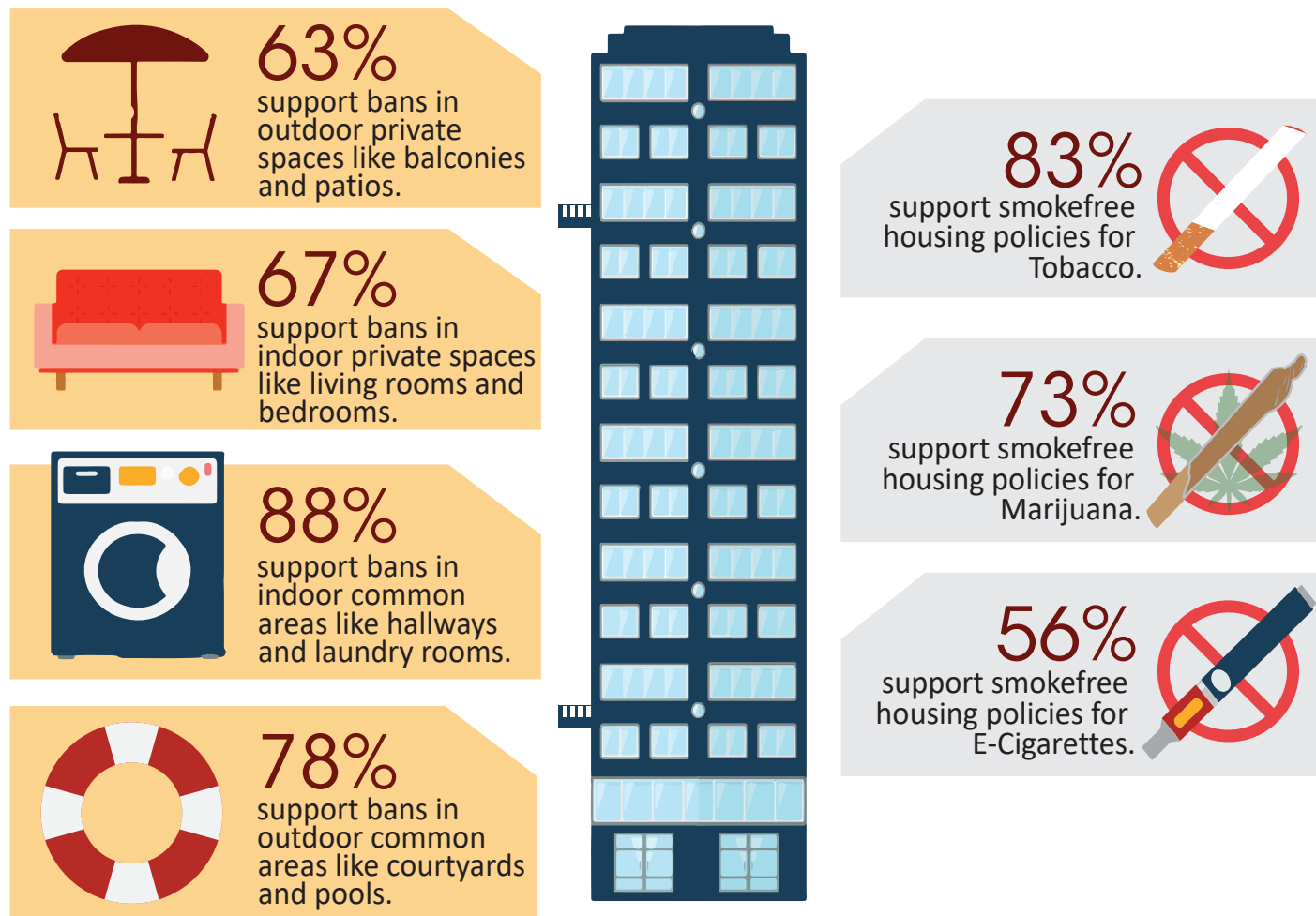
3 in 5

Tenants who have or live with someone who has a chronic condition reported exposure to secondhand smoke in their home.

3 in 5

Of these respondents reported that secondhand smoke worsened the chronic health condition.

BREAKDOWN OF TENANT SUPPORT FOR SMOKEFREE HOUSING POLICIES³



AMONG THE TENANTS EXPOSED TO SECONDHAND SMOKE²

71% were exposed to Tobacco smoke.

69% were exposed to Marijuana smoke.

23% were exposed to E-Cigarette vapor.

ABOUT THE SMOKEFREE MULTI-UNIT HOUSING PROJECT

The UCLA Center for Health Policy Research in partnership with the Los Angeles County Department of Public Health evaluates smokefree multi-unit housing throughout the City of Los Angeles. The evaluation assesses exposure to secondhand smoke in multi-unit housing, knowledge of the harms of secondhand smoke, and the level of support for protections against secondhand smoke exposure in multi-unit housing. Project Partners: Apartment Association of Greater Los Angeles, Fame Corporations, Day One, and Koreatown Youth Community Center.

© 2019. California Department of Public Health. Funded under contract #CTCP-17-19.

REFERENCES

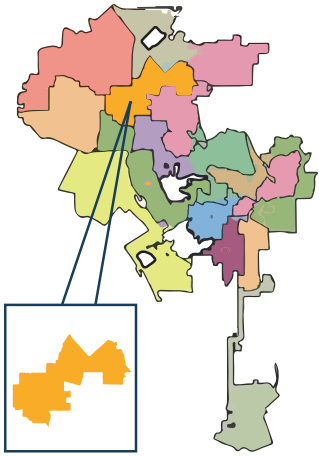
1. 2010 U.S. Census Data and 2016 American Community Survey
2. 2019 UCLA Center for Health Policy Research and LADPH SFMUH Project Tenant Survey Data from 409 Respondents
3. 2019 UCLA Center for Health Policy Research and LADPH SFMUH Project Owner Survey Data from 145 Respondents

SMOKEFREE MULTI-UNIT HOUSING PROFILE

COUNCIL DISTRICT 6

BASED ON SURVEY RESPONSES FROM TENANTS & OWNERS

MULTI-UNIT HOUSING INCLUDES APARTMENTS, DUPLEX, TRIPLEXES WHERE UNITS ARE NEXT TO EACH OTHER SHARING A COMMON WALL



TOTAL HOUSING UNITS¹
77,790



MULTI-UNIT HOUSING
59%



7 in 10

DISTRICT TENANTS SUPPORT SMOKEFREE LAWS IN ALL PROPERTIES²

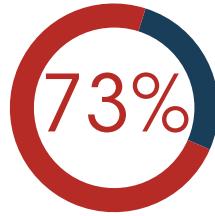


DISTRICT TENANTS

SUPPORT SMOKEFREE HOUSING POLICIES²



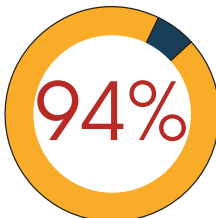
Of **tenants** surveyed supported smokefree laws in new buildings.



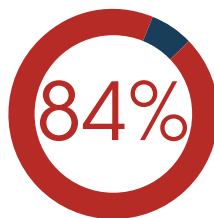
Of **tenants** surveyed supported smokefree laws in old buildings.

OWNERS IN THE CITY OF LA

SUPPORT SMOKEFREE HOUSING POLICIES³



Of **owners** with self-imposed smokefree policies support policies.



Of **owners** without self-imposed smokefree policies support policies.

DISTRICT TENANTS

REPORTED EXPOSURE TO SECONDHAND SMOKE²

WITHIN MULTI-UNIT HOUSING:



3 in 5

Tenants reported exposure to secondhand smoke.



3 in 5

Tenants living with children reported exposure to secondhand smoke in their home.



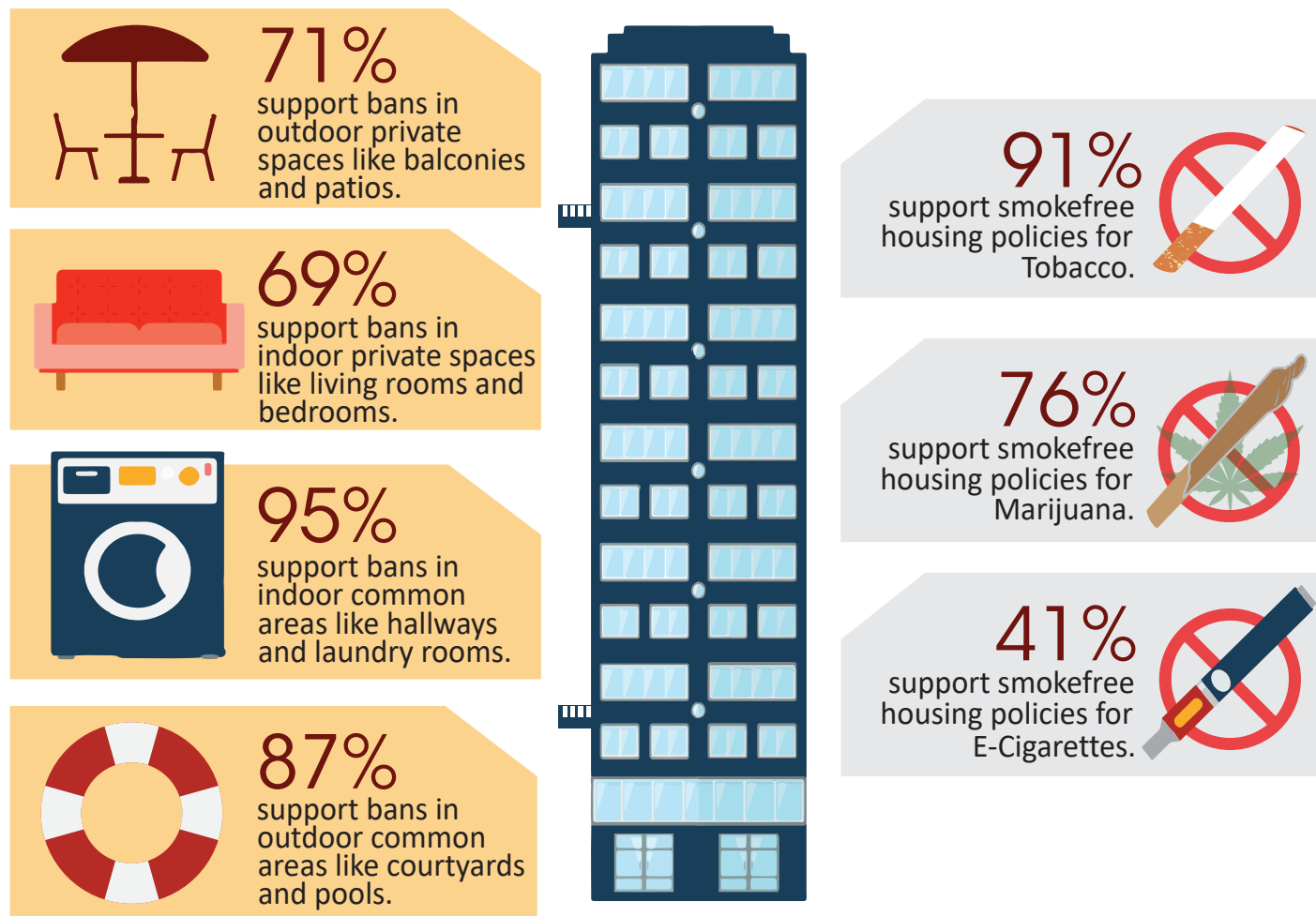
2 in 3

Tenants who have or live with someone who has a chronic condition reported exposure to secondhand smoke in their home.

9 in 10

Of these respondents reported that secondhand smoke worsened the chronic health condition.

BREAKDOWN OF TENANT SUPPORT FOR SMOKEFREE HOUSING POLICIES³



AMONG THE TENANTS EXPOSED TO SECONDHAND SMOKE²

91% were exposed to Tobacco smoke.

76% were exposed to Marijuana smoke.

12% were exposed to E-Cigarette vapor.

ABOUT THE SMOKEFREE MULTI-UNIT HOUSING PROJECT

The UCLA Center for Health Policy Research in partnership with the Los Angeles County Department of Public Health evaluates smokefree multi-unit housing throughout the City of Los Angeles. The evaluation assesses exposure to secondhand smoke in multi-unit housing, knowledge of the harms of secondhand smoke, and the level of support for protections against secondhand smoke exposure in multi-unit housing. Project Partners: Apartment Association of Greater Los Angeles, Fame Corporations, Day One, and Koreatown Youth Community Center.

© 2019. California Department of Public Health. Funded under contract #CTCP-17-19.

REFERENCES

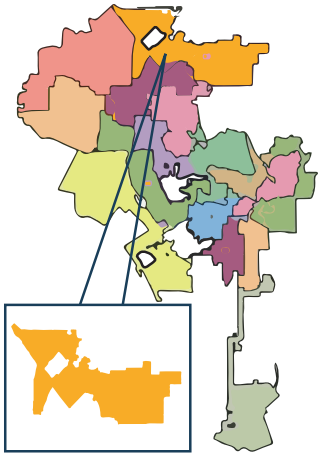
1. 2010 U.S. Census Data and 2016 American Community Survey
2. 2019 UCLA Center for Health Policy Research and LADPH SFMUH Project Tenant Survey Data from 409 Respondents
3. 2019 UCLA Center for Health Policy Research and LADPH SFMUH Project Owner Survey Data from 145 Respondents

SMOKEFREE MULTI-UNIT HOUSING PROFILE

COUNCIL DISTRICT 7

BASED ON SURVEY RESPONSES FROM TENANTS & OWNERS

MULTI-UNIT HOUSING INCLUDES APARTMENTS, DUPLEX, TRIPLEXES WHERE UNITS ARE NEXT TO EACH OTHER SHARING A COMMON WALL



TOTAL HOUSING UNITS¹
73,055



MULTI-UNIT HOUSING
30%



7 in 10

DISTRICT TENANTS SUPPORT SMOKEFREE LAWS IN ALL PROPERTIES²

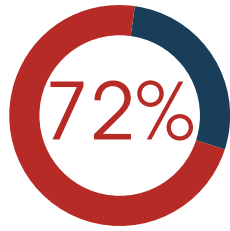


DISTRICT TENANTS

SUPPORT SMOKEFREE HOUSING POLICIES²



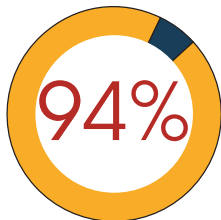
Of **tenants** surveyed supported smokefree policies in new buildings.



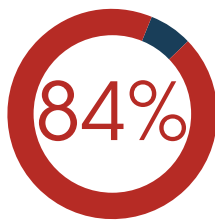
Of **tenants** surveyed supported smokefree policies in old buildings.

OWNERS IN THE CITY OF LA

SUPPORT SMOKEFREE HOUSING POLICIES³



Of **owners** with self-imposed smokefree policies support policies.



Of **owners** without self-imposed smokefree policies support policies.

DISTRICT TENANTS

REPORTED EXPOSURE TO SECONDHAND SMOKE²

WITHIN MULTI-UNIT HOUSING:



3 in 5

Tenants reported exposure to secondhand smoke.



3 in 5

Tenants living with children reported exposure to secondhand smoke in their home.



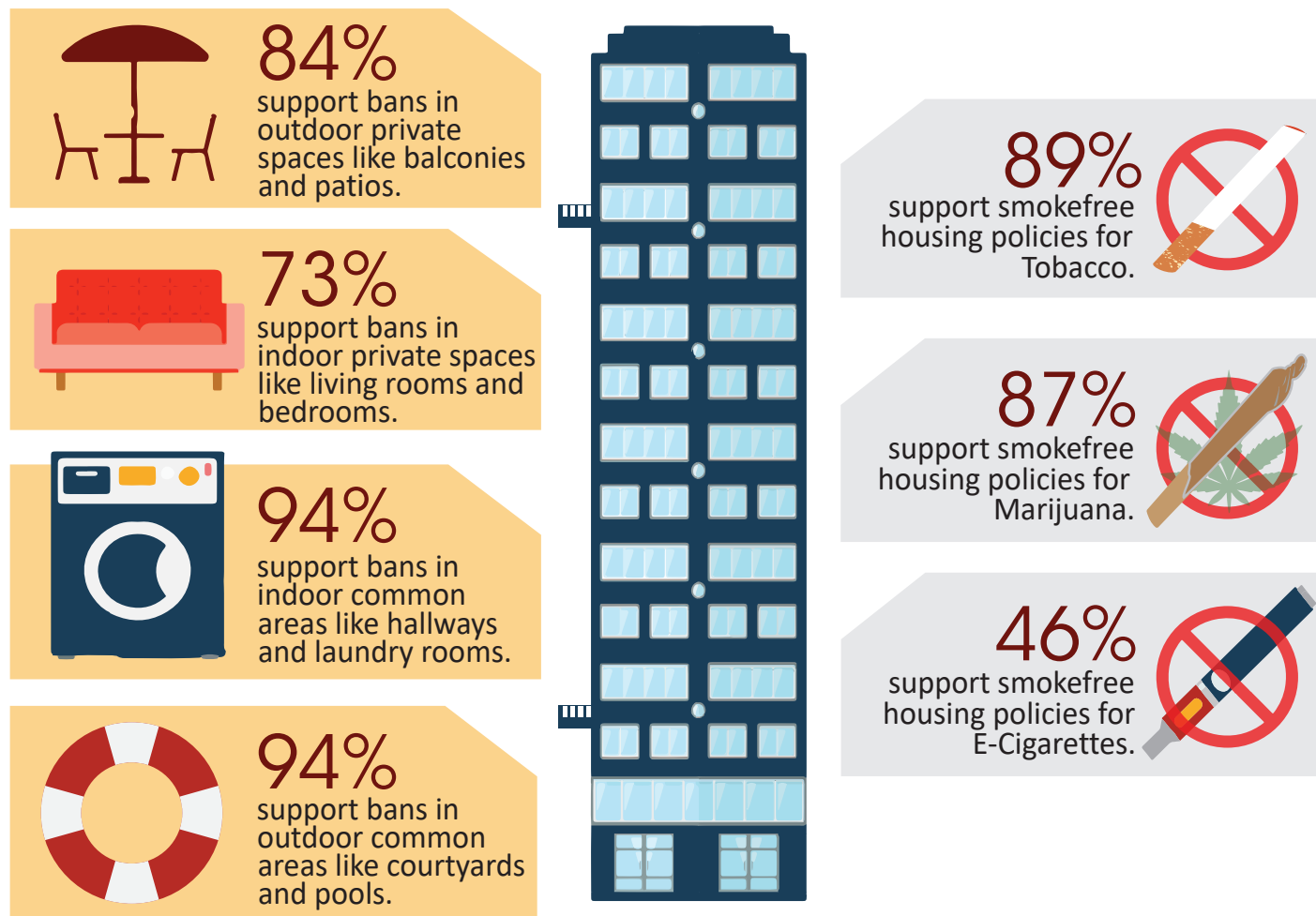
2 in 3

Tenants who have or live with someone who has a chronic condition reported exposure to secondhand smoke in their home.

9 in 10

Of these respondents reported that secondhand smoke worsened the chronic health condition.

BREAKDOWN OF TENANT SUPPORT FOR SMOKEFREE HOUSING POLICIES³



AMONG THE TENANTS EXPOSED TO SECONDHAND SMOKE²

79% were exposed to Tobacco smoke.

81% were exposed to Marijuana smoke.

20% were exposed to E-Cigarette vapor.

ABOUT THE SMOKEFREE MULTI-UNIT HOUSING PROJECT

The UCLA Center for Health Policy Research in partnership with the Los Angeles County Department of Public Health evaluates smokefree multi-unit housing throughout the City of Los Angeles. The evaluation assesses exposure to secondhand smoke in multi-unit housing, knowledge of the harms of secondhand smoke, and the level of support for protections against secondhand smoke exposure in multi-unit housing. Project Partners: Apartment Association of Greater Los Angeles, Fam Corporations, Day One, and Koreatown Youth Community Center.

© 2019. California Department of Public Health. Funded under contract #CTCP-17-19.

REFERENCES

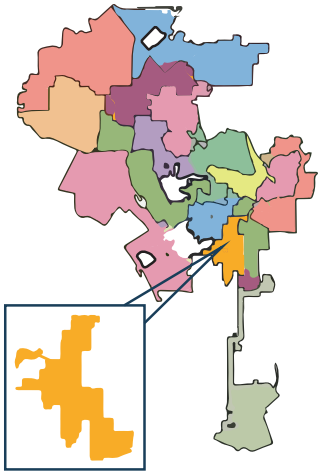
1. 2010 U.S. Census Data and 2016 American Community Survey
2. 2019 UCLA Center for Health Policy Research and LADPH SFMUH Project Tenant Survey Data from 409 Respondents
3. 2019 UCLA Center for Health Policy Research and LADPH SFMUH Project Owner Survey Data from 145 Respondents

SMOKEFREE MULTI-UNIT HOUSING PROFILE

COUNCIL DISTRICT 8

BASED ON SURVEY RESPONSES FROM TENANTS & OWNERS

MULTI-UNIT HOUSING INCLUDES APARTMENTS, DUPLEX, TRIPLEXES WHERE UNITS ARE NEXT TO EACH OTHER SHARING A COMMON WALL



TOTAL HOUSING UNITS¹

82,879



MULTI-UNIT HOUSING

50%



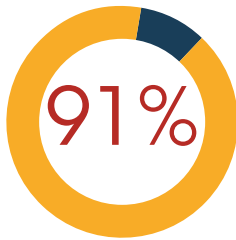
2 in 3

DISTRICT TENANTS SUPPORT SMOKEFREE LAWS IN ALL PROPERTIES²

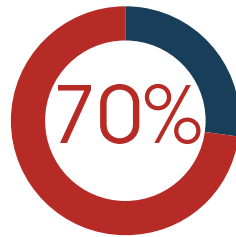


DISTRICT TENANTS

SUPPORT SMOKEFREE HOUSING POLICIES²



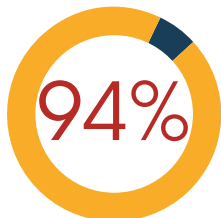
Of **tenants** surveyed supported smokefree policies in new buildings.



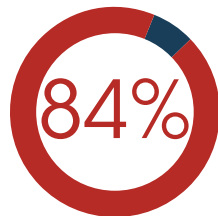
Of **tenants** surveyed supported smokefree policies in old buildings.

OWNERS IN THE CITY OF LA

SUPPORT SMOKEFREE HOUSING POLICIES³



Of **owners** with self-imposed smokefree policies support policies.



Of **owners** without self-imposed smokefree policies support policies.

DISTRICT TENANTS

REPORTED EXPOSURE TO SECONDHAND SMOKE²

WITHIN MULTI-UNIT HOUSING:



1 in 3

Tenants reported exposure to secondhand smoke.



2 in 5

Tenants living with children reported exposure to secondhand smoke in their home.



1 in 3

Tenants who have or live with someone who has a chronic condition reported exposure to secondhand smoke in their home.

7 in 10

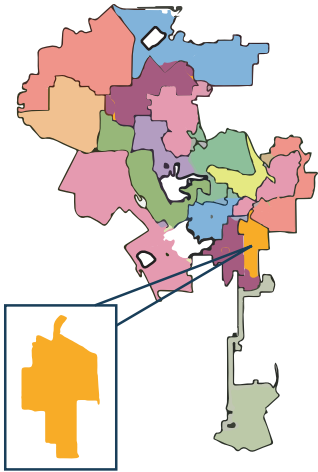
Of these respondents reported that secondhand smoke worsened the chronic health condition.

SMOKEFREE MULTI-UNIT HOUSING PROFILE

COUNCIL DISTRICT 9

BASED ON SURVEY RESPONSES FROM TENANTS & OWNERS

MULTI-UNIT HOUSING INCLUDES APARTMENTS, DUPLEX, TRIPLEXES WHERE UNITS ARE NEXT TO EACH OTHER SHARING A COMMON WALL



TOTAL HOUSING UNITS¹

63,266



MULTI-UNIT HOUSING

55%



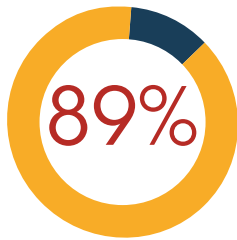
2 in 3

DISTRICT TENANTS SUPPORT SMOKEFREE LAWS IN ALL PROPERTIES²

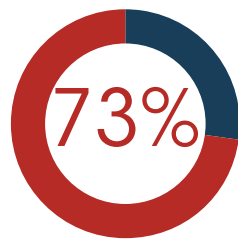


DISTRICT TENANTS

SUPPORT SMOKEFREE HOUSING POLICIES²



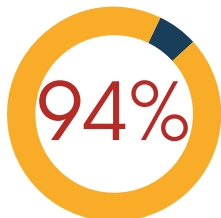
Of **tenants** surveyed supported smokefree policies in new buildings.



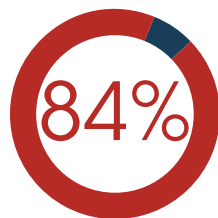
Of **tenants** surveyed supported smokefree policies in old buildings.

OWNERS IN THE CITY OF LA

SUPPORT SMOKEFREE HOUSING POLICIES³



Of **owners** with self-imposed smokefree policies support policies.



Of **owners** without self-imposed smokefree policies support policies.

DISTRICT TENANTS

REPORTED EXPOSURE TO SECONDHAND SMOKE²

WITHIN MULTI-UNIT HOUSING:



1 in 2

Tenants reported exposure to secondhand smoke.



1 in 2

Tenants living with children reported exposure to secondhand smoke in their home.



2 in 5

Tenants who have or live with someone who has a chronic condition reported exposure to secondhand smoke in their home.

4 in 5

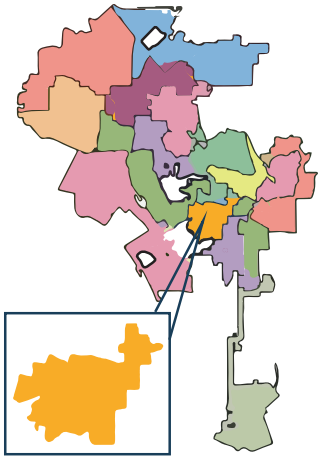
Of these respondents reported that secondhand smoke worsened the chronic health condition.

SMOKEFREE MULTI-UNIT HOUSING PROFILE

COUNCIL DISTRICT 10

BASED ON SURVEY RESPONSES FROM TENANTS & OWNERS

MULTI-UNIT HOUSING INCLUDES APARTMENTS, DUPLEX, TRIPLEXES WHERE UNITS ARE NEXT TO EACH OTHER SHARING A COMMON WALL



TOTAL HOUSING UNITS¹

106,660



MULTI-UNIT HOUSING

78%



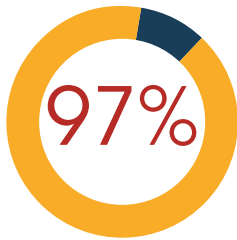
2 in 3

DISTRICT TENANTS SUPPORT SMOKEFREE LAWS IN ALL PROPERTIES²

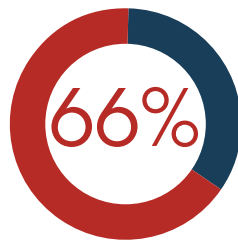


DISTRICT TENANTS

SUPPORT SMOKEFREE HOUSING POLICIES²



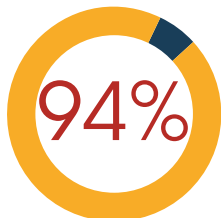
Of **tenants** surveyed supported smokefree policies in new buildings.



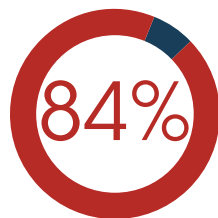
Of **tenants** surveyed supported smokefree policies in old buildings.

OWNERS IN THE CITY OF LA

SUPPORT SMOKEFREE HOUSING POLICIES³



Of **owners** with self-imposed smokefree policies support policies.



Of **owners** without self-imposed smokefree policies support policies.

DISTRICT TENANTS

REPORTED EXPOSURE TO SECONDHAND SMOKE²

WITHIN MULTI-UNIT HOUSING:



1 in 3

Tenants reported exposure to secondhand smoke.



1 in 2

Tenants living with children reported exposure to secondhand smoke in their home.



1 in 5

Tenants who have or live with someone who has a chronic condition reported exposure to secondhand smoke in their home.

9 in 10

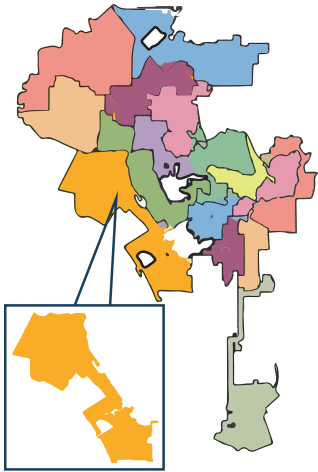
Of these respondents reported that secondhand smoke worsened the chronic health condition.

SMOKEFREE MULTI-UNIT HOUSING PROFILE

COUNCIL DISTRICT 11

BASED ON SURVEY RESPONSES FROM TENANTS & OWNERS

MULTI-UNIT HOUSING INCLUDES APARTMENTS, DUPLEX, TRIPLEXES WHERE UNITS ARE NEXT TO EACH OTHER SHARING A COMMON WALL



TOTAL HOUSING UNITS¹
124,740



MULTI-UNIT HOUSING
63%



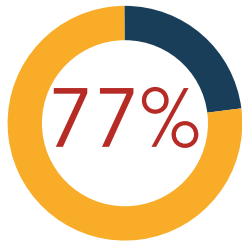
7 in 10

DISTRICT TENANTS SUPPORT SMOKEFREE LAWS IN ALL PROPERTIES²

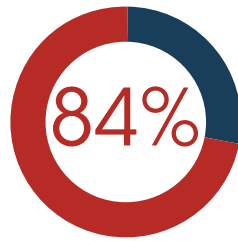


DISTRICT TENANTS

SUPPORT SMOKEFREE HOUSING POLICIES²



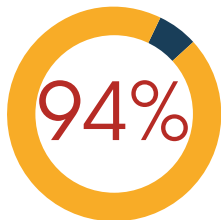
Of **tenants** surveyed supported smokefree policies in new buildings.



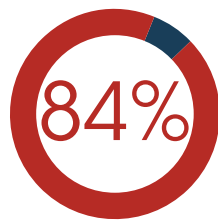
Of **tenants** surveyed supported smokefree policies in old buildings.

OWNERS IN THE CITY OF LA

SUPPORT SMOKEFREE HOUSING POLICIES³



Of **owners** with self-imposed smokefree policies support policies.



Of **owners** without self-imposed smokefree policies support policies.

DISTRICT TENANTS

REPORTED EXPOSURE TO SECONDHAND SMOKE²

WITHIN MULTI-UNIT HOUSING:



2 in 5

Tenants reported exposure to secondhand smoke.



1 in 3

Tenants living with children reported exposure to secondhand smoke in their home.



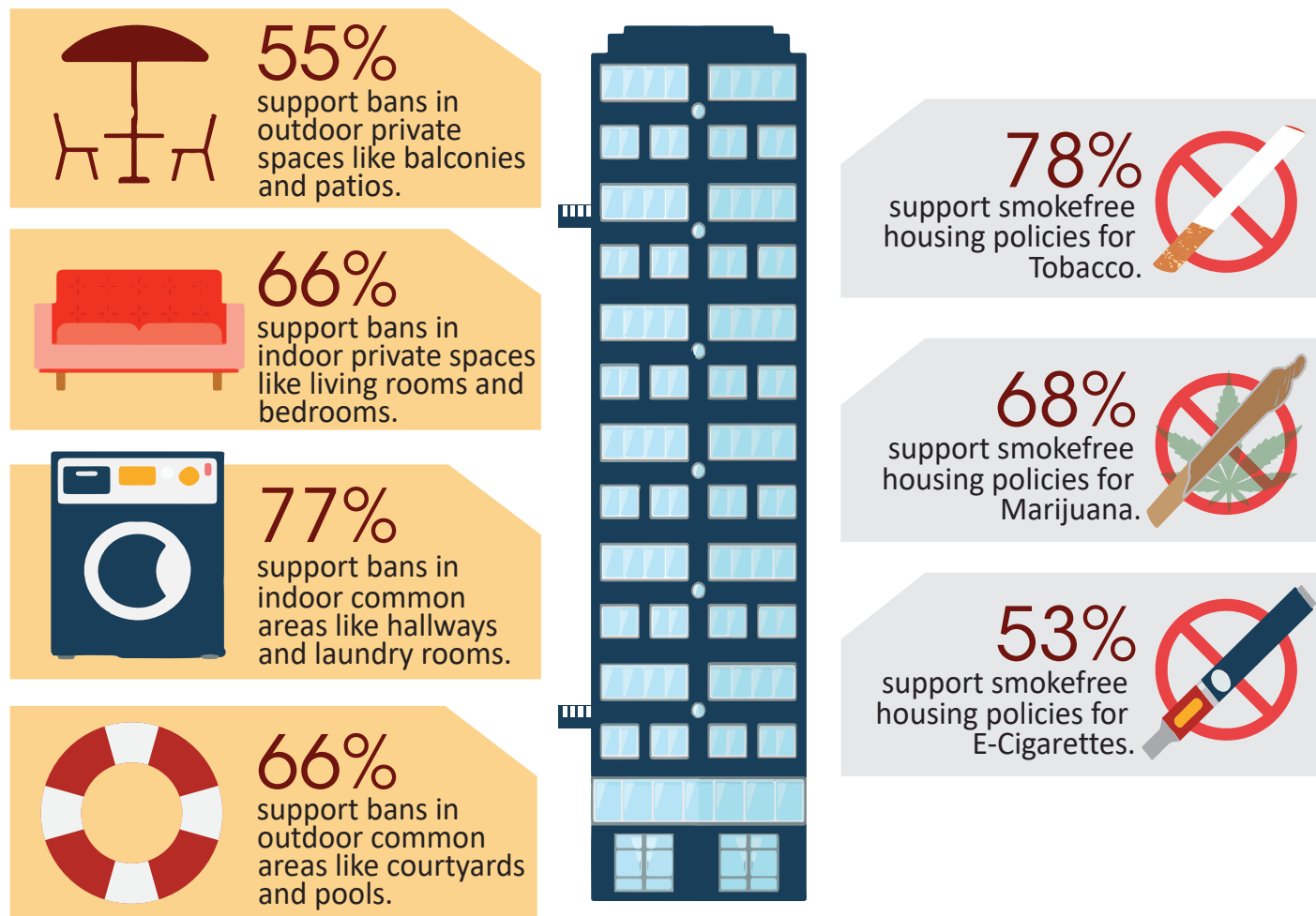
2 in 5

Tenants who have or live with someone who has a chronic condition reported exposure to secondhand smoke in their home.

7 in 10

Of these respondents reported that secondhand smoke worsened the chronic health condition.

BREAKDOWN OF TENANT SUPPORT FOR SMOKEFREE HOUSING POLICIES³



AMONG THE TENANTS EXPOSED TO SECONDHAND SMOKE²

69% were exposed to Tobacco smoke.

57% were exposed to Marijuana smoke.

41% were exposed to E-Cigarette vapor.

ABOUT THE SMOKEFREE MULTI-UNIT HOUSING PROJECT

The UCLA Center for Health Policy Research in partnership with the Los Angeles County Department of Public Health evaluates smokefree multi-unit housing throughout the City of Los Angeles. The evaluation assesses exposure to secondhand smoke in multi-unit housing, knowledge of the harms of secondhand smoke, and the level of support for protections against secondhand smoke exposure in multi-unit housing. Project Partners: Apartment Association of Greater Los Angeles, Fame Corporations, Day One, and Koreatown Youth Community Center.

© 2019. California Department of Public Health. Funded under contract #CTCP-17-19.

REFERENCES

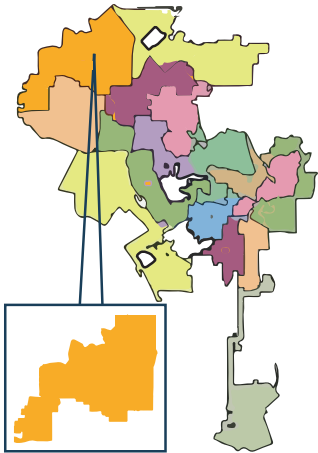
1. 2010 U.S. Census Data and 2016 American Community Survey
2. 2019 UCLA Center for Health Policy Research and LADPH SFMUH Project Tenant Survey Data from 409 Respondents
3. 2019 UCLA Center for Health Policy Research and LADPH SFMUH Project Owner Survey Data from 145 Respondents

SMOKEFREE MULTI-UNIT HOUSING PROFILE

COUNCIL DISTRICT 12

BASED ON SURVEY RESPONSES FROM TENANTS & OWNERS

MULTI-UNIT HOUSING INCLUDES APARTMENTS, DUPLEX, TRIPLEXES WHERE UNITS ARE NEXT TO EACH OTHER SHARING A COMMON WALL



TOTAL HOUSING UNITS¹
92,524



MULTI-UNIT HOUSING
28%



3 in 5

DISTRICT TENANTS SUPPORT SMOKEFREE LAWS IN ALL PROPERTIES²

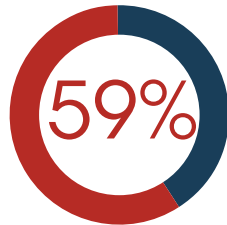


DISTRICT TENANTS

SUPPORT SMOKEFREE HOUSING POLICIES²



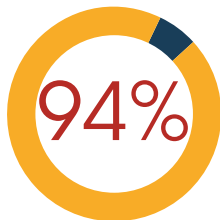
Of **tenants** surveyed supported smokefree policies in new buildings.



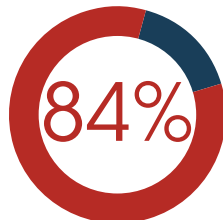
Of **tenants** surveyed supported smokefree policies in old buildings.

OWNERS IN THE CITY OF LA

SUPPORT SMOKEFREE HOUSING POLICIES³



Of **owners** with self-imposed smokefree policies support policies.



Of **owners** without self-imposed smokefree policies support policies.

DISTRICT TENANTS

REPORTED EXPOSURE TO SECONDHAND SMOKE²

WITHIN MULTI-UNIT HOUSING:



1 in 2

Tenants reported exposure to secondhand smoke.



1 in 2

Tenants living with children reported exposure to secondhand smoke in their home.



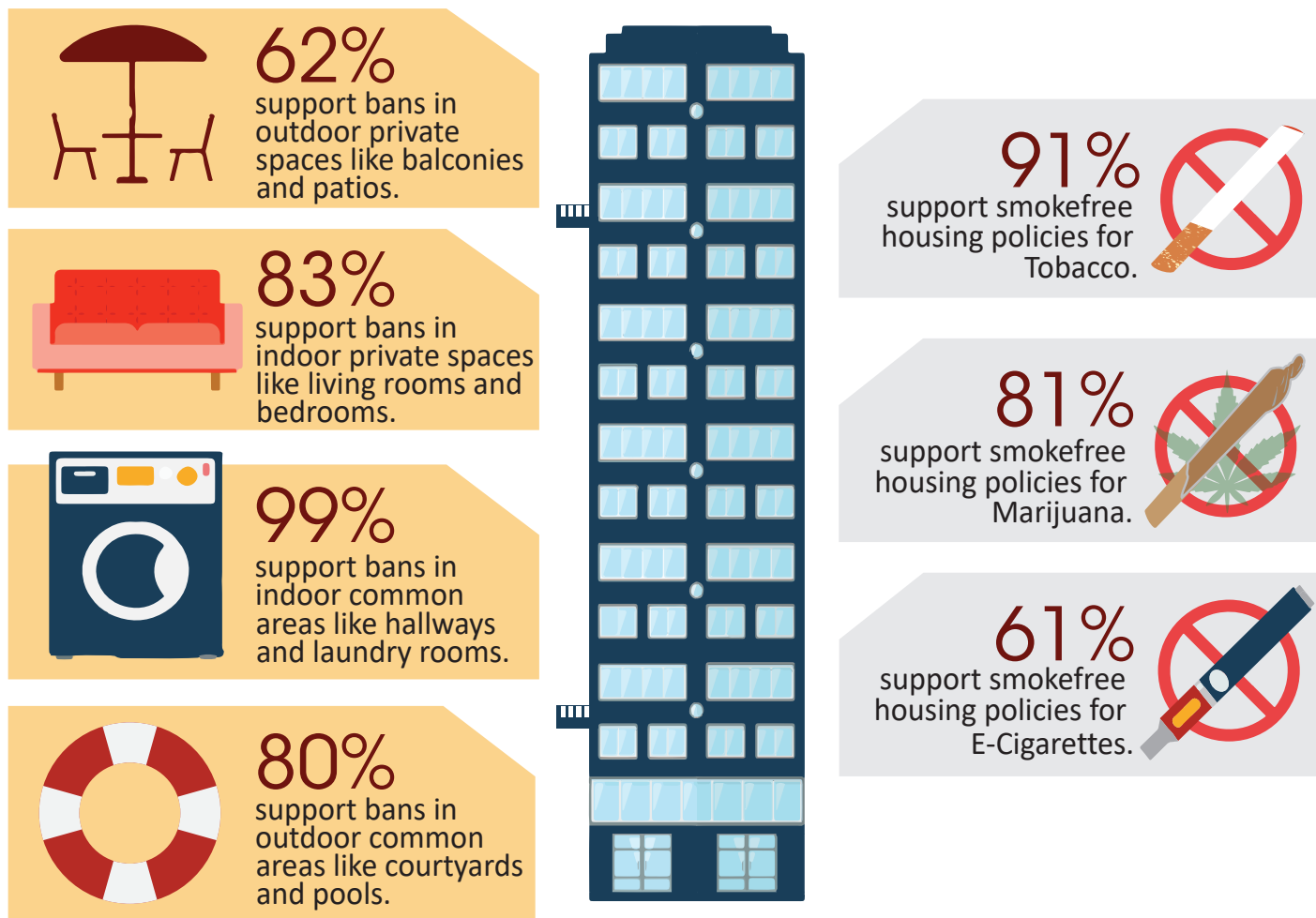
1 in 2

Tenants who have or live with someone who has a chronic condition reported exposure to secondhand smoke in their home.

3 in 4

Of these respondents reported that secondhand smoke worsened the chronic health condition.

BREAKDOWN OF TENANT SUPPORT FOR SMOKEFREE HOUSING POLICIES³



AMONG THE TENANTS EXPOSED TO SECONDHAND SMOKE²

71% were exposed to Tobacco smoke.

86% were exposed to Marijuana smoke.

10% were exposed to E-Cigarette vapor.

ABOUT THE SMOKEFREE MULTI-UNIT HOUSING PROJECT

The UCLA Center for Health Policy Research in partnership with the Los Angeles County Department of Public Health evaluates smokefree multi-unit housing throughout the City of Los Angeles. The evaluation assesses exposure to secondhand smoke in multi-unit housing, knowledge of the harms of secondhand smoke, and the level of support for protections against secondhand smoke exposure in multi-unit housing. Project Partners: Apartment Association of Greater Los Angeles, Fame Corporations, Day One, and Koreatown Youth Community Center.

© 2019. California Department of Public Health. Funded under contract #CTCP-17-19.

REFERENCES

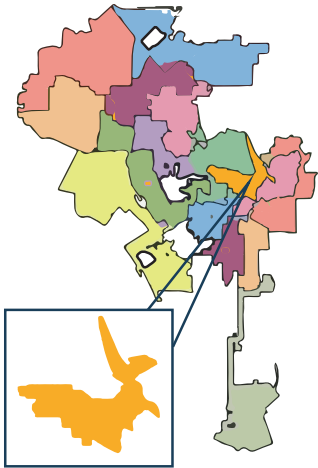
1. 2010 U.S. Census Data and 2016 American Community Survey
2. 2019 UCLA Center for Health Policy Research and LADPH SFMUH Project Tenant Survey Data from 409 Respondents
3. 2019 UCLA Center for Health Policy Research and LADPH SFMUH Project Owner Survey Data from 145 Respondents

SMOKEFREE MULTI-UNIT HOUSING PROFILE

COUNCIL DISTRICT 13

BASED ON SURVEY RESPONSES FROM TENANTS & OWNERS

MULTI-UNIT HOUSING INCLUDES APARTMENTS, DUPLEX, TRIPLEXES WHERE UNITS ARE NEXT TO EACH OTHER SHARING A COMMON WALL



TOTAL HOUSING UNITS¹
105,033



MULTI-UNIT HOUSING
81%



4 in 5

DISTRICT TENANTS SUPPORT SMOKEFREE LAWS IN ALL PROPERTIES²

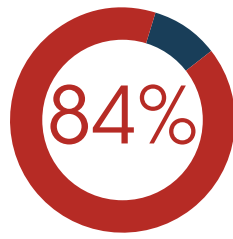


DISTRICT TENANTS

SUPPORT SMOKEFREE HOUSING POLICIES²



Of **tenants** surveyed supported smokefree policies in new buildings.



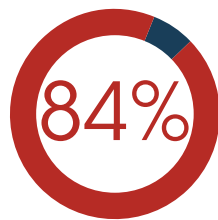
Of **tenants** surveyed supported smokefree policies in old buildings.

OWNERS IN THE CITY OF LA

SUPPORT SMOKEFREE HOUSING POLICIES³



Of **owners** with self-imposed smokefree policies support policies.



Of **owners** without self-imposed smokefree policies support policies.

DISTRICT TENANTS

REPORTED EXPOSURE TO SECONDHAND SMOKE²

WITHIN MULTI-UNIT HOUSING:



1 in 2

Tenants reported exposure to secondhand smoke.



1 in 2

Tenants living with children reported exposure to secondhand smoke in their home.



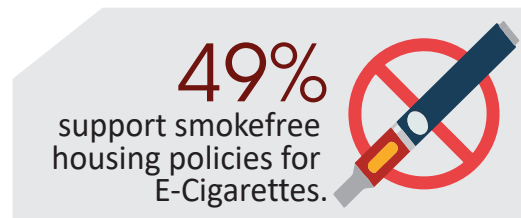
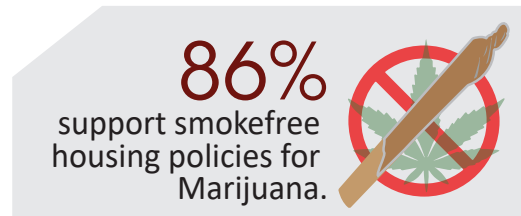
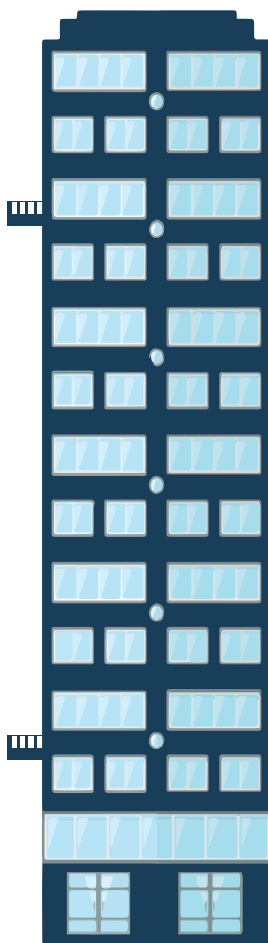
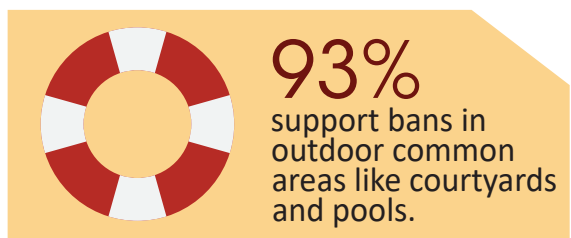
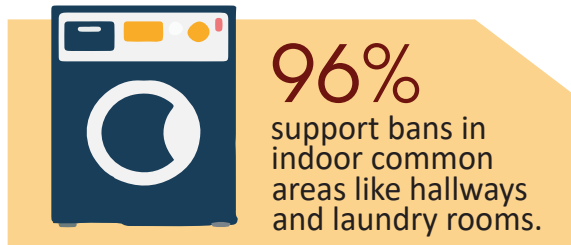
1 in 2

Tenants who have or live with someone who has a chronic condition reported exposure to secondhand smoke in their home.

3 in 5

Of these respondents reported that secondhand smoke worsened the chronic health condition.

BREAKDOWN OF TENANT SUPPORT FOR SMOKEFREE HOUSING POLICIES³



AMONG THE TENANTS EXPOSED TO SECONDHAND SMOKE²



ABOUT THE SMOKEFREE MULTI-UNIT HOUSING PROJECT

The UCLA Center for Health Policy Research in partnership with the Los Angeles County Department of Public Health evaluates smokefree multi-unit housing throughout the City of Los Angeles. The evaluation assesses exposure to secondhand smoke in multi-unit housing, knowledge of the harms of secondhand smoke, and the level of support for protections against secondhand smoke exposure in multi-unit housing. Project Partners: Apartment Association of Greater Los Angeles, Fame Corporations, Day One, and Koreatown Youth Community Center.

© 2019. California Department of Public Health. Funded under contract #CTCP-17-19.

REFERENCES

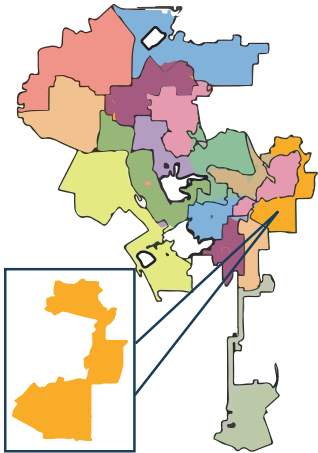
1. 2010 U.S. Census Data and 2016 American Community Survey
2. 2019 UCLA Center for Health Policy Research and LADPH SFMUH Project Tenant Survey Data from 409 Respondents
3. 2019 UCLA Center for Health Policy Research and LADPH SFMUH Project Owner Survey Data from 145 Respondents

SMOKEFREE MULTI-UNIT HOUSING PROFILE

COUNCIL DISTRICT 14

BASED ON SURVEY RESPONSES FROM TENANTS & OWNERS

MULTI-UNIT HOUSING INCLUDES APARTMENTS, DUPLEX, TRIPLEXES WHERE UNITS ARE NEXT TO EACH OTHER SHARING A COMMON WALL



TOTAL HOUSING UNITS¹

89,845



MULTI-UNIT HOUSING

63%



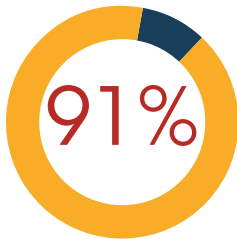
4 in 5

DISTRICT TENANTS SUPPORT SMOKEFREE LAWS IN ALL PROPERTIES²

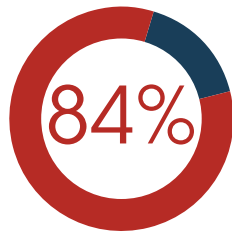


DISTRICT TENANTS

SUPPORT SMOKEFREE HOUSING POLICIES²



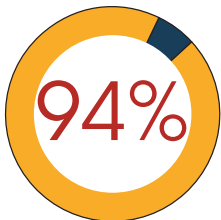
Of **tenants** surveyed supported smokefree policies in new buildings.



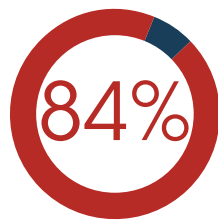
Of **tenants** surveyed supported smokefree policies in old buildings.

OWNERS IN THE CITY OF LA

SUPPORT SMOKEFREE HOUSING POLICIES³



Of **owners** with self-imposed smokefree policies support policies.



Of **owners** without self-imposed smokefree policies support policies.

DISTRICT TENANTS

REPORTED EXPOSURE TO SECONDHAND SMOKE²

WITHIN MULTI-UNIT HOUSING:



1 in 2

Tenants reported exposure to secondhand smoke.



3 in 5

Tenants living with children reported exposure to secondhand smoke in their home.



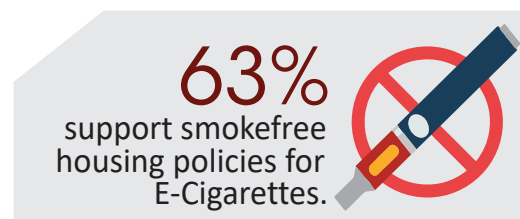
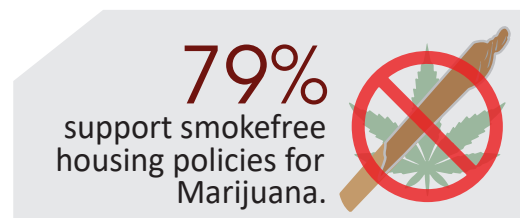
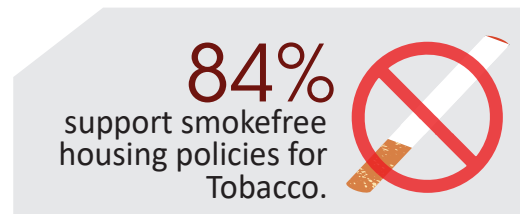
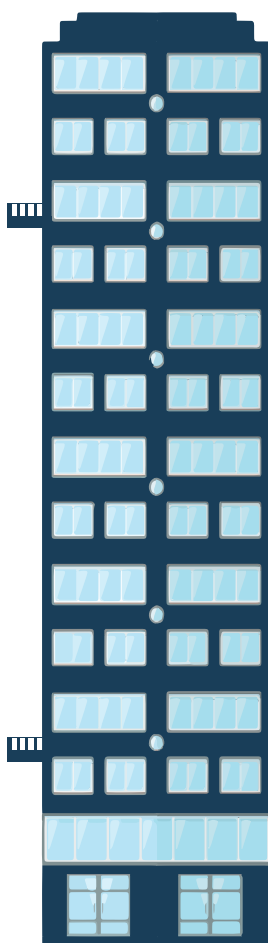
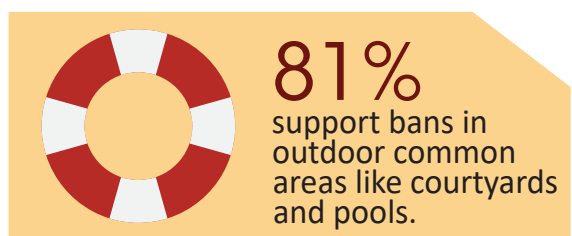
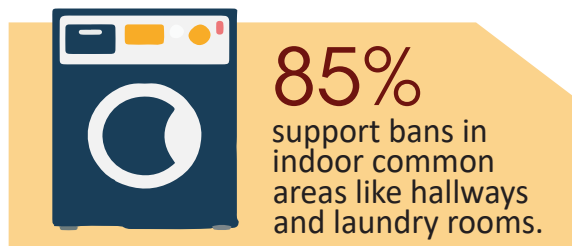
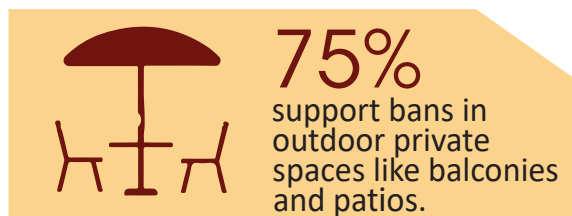
3 in 5

Tenants who have or live with someone who has a chronic condition reported exposure to secondhand smoke in their home.

3 in 5

Of these respondents reported that secondhand smoke worsened the chronic health condition.

BREAKDOWN OF TENANT SUPPORT FOR SMOKEFREE HOUSING POLICIES³



AMONG THE TENANTS EXPOSED TO SECONDHAND SMOKE²



ABOUT THE SMOKEFREE MULTI-UNIT HOUSING PROJECT

The UCLA Center for Health Policy Research in partnership with the Los Angeles County Department of Public Health evaluates smokefree multi-unit housing throughout the City of Los Angeles. The evaluation assesses exposure to secondhand smoke in multi-unit housing, knowledge of the harms of secondhand smoke, and the level of support for protections against secondhand smoke exposure in multi-unit housing. Project Partners: Apartment Association of Greater Los Angeles, Fame Corporations, Day One, and Koreatown Youth Community Center.

© 2019. California Department of Public Health. Funded under contract #CTCP-17-19.

REFERENCES

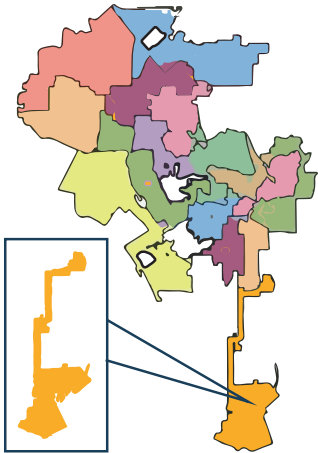
1. 2010 U.S. Census Data and 2016 American Community Survey
2. 2019 UCLA Center for Health Policy Research and LADPH SFMUH Project Tenant Survey Data from 409 Respondents
3. 2019 UCLA Center for Health Policy Research and LADPH SFMUH Project Owner Survey Data from 145 Respondents

SMOKEFREE MULTI-UNIT HOUSING PROFILE

COUNCIL DISTRICT 15

BASED ON SURVEY RESPONSES FROM TENANTS & OWNERS

MULTI-UNIT HOUSING INCLUDES APARTMENTS, DUPLEX, TRIPLEXES WHERE UNITS ARE NEXT TO EACH OTHER SHARING A COMMON WALL



TOTAL HOUSING UNITS¹
84,082



MULTI-UNIT HOUSING
53%



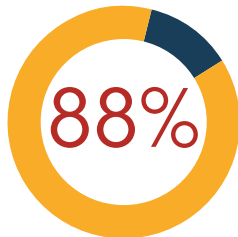
4 in 5

DISTRICT TENANTS SUPPORT SMOKEFREE LAWS IN ALL PROPERTIES²

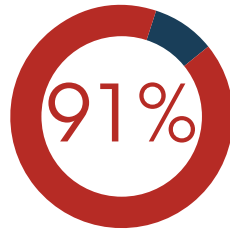


DISTRICT TENANTS

SUPPORT SMOKEFREE HOUSING POLICIES²



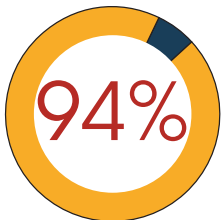
Of **tenants** surveyed supported smokefree policies in new buildings.



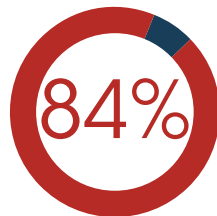
Of **tenants** surveyed supported smokefree policies in old buildings.

OWNERS IN THE CITY OF LA

SUPPORT SMOKEFREE HOUSING POLICIES³



Of **owners** with self-imposed smokefree policies support policies.



Of **owners** without self-imposed smokefree policies support policies.

DISTRICT TENANTS

REPORTED EXPOSURE TO SECONDHAND SMOKE²

WITHIN MULTI-UNIT HOUSING:



2 in 5

Tenants reported exposure to secondhand smoke.



2 in 5

Tenants living with children reported exposure to secondhand smoke in their home.



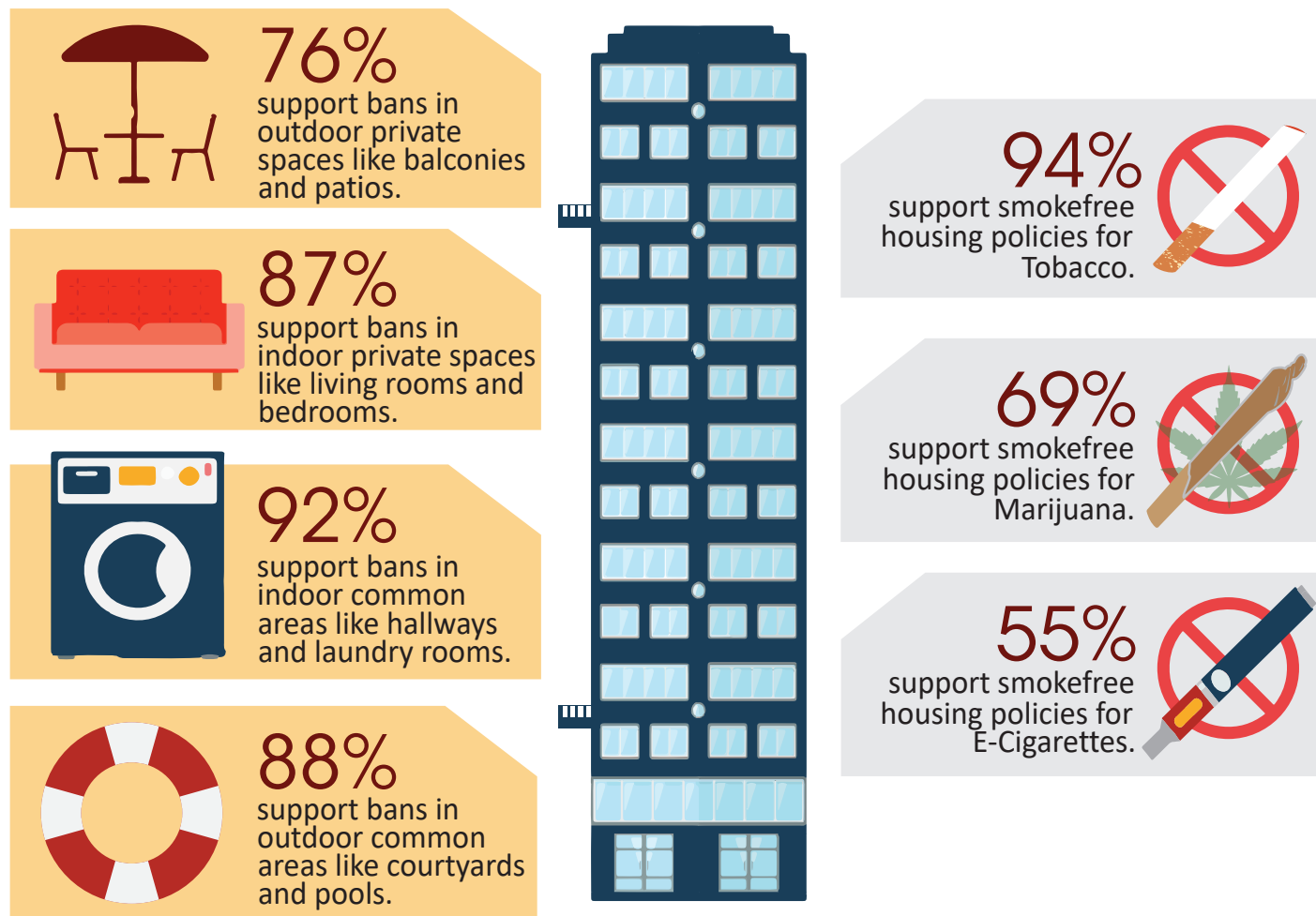
2 in 5

Tenants who have or live with someone who has a chronic condition reported exposure to secondhand smoke in their home.

1 in 2

Of these respondents reported that secondhand smoke worsened the chronic health condition.

BREAKDOWN OF TENANT SUPPORT FOR SMOKEFREE HOUSING POLICIES³



AMONG THE TENANTS EXPOSED TO SECONDHAND SMOKE²

76% were exposed to Tobacco smoke.

78% were exposed to Marijuana smoke.

15% were exposed to E-Cigarette vapor.

ABOUT THE SMOKEFREE MULTI-UNIT HOUSING PROJECT

The UCLA Center for Health Policy Research in partnership with the Los Angeles County Department of Public Health evaluates smokefree multi-unit housing throughout the City of Los Angeles. The evaluation assesses exposure to secondhand smoke in multi-unit housing, knowledge of the harms of secondhand smoke, and the level of support for protections against secondhand smoke exposure in multi-unit housing. Project Partners: Apartment Association of Greater Los Angeles, Fame Corporations, Day One, and Koreatown Youth Community Center.

© 2019. California Department of Public Health. Funded under contract #CTCP-17-19.

REFERENCES

1. 2010 U.S. Census Data and 2016 American Community Survey
2. 2019 UCLA Center for Health Policy Research and LADPH SFMUH Project Tenant Survey Data from 409 Respondents
3. 2019 UCLA Center for Health Policy Research and LADPH SFMUH Project Owner Survey Data from 145 Respondents