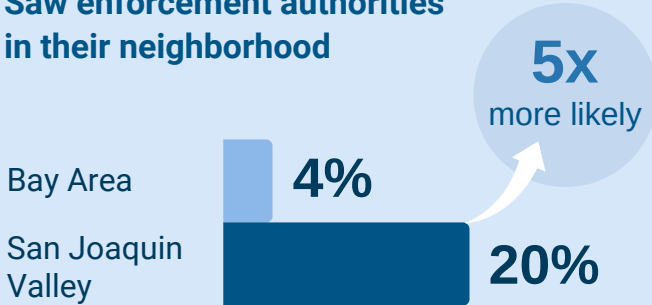


Latinx and Asian Immigrants in California: Experiences with Law and Immigration Enforcement

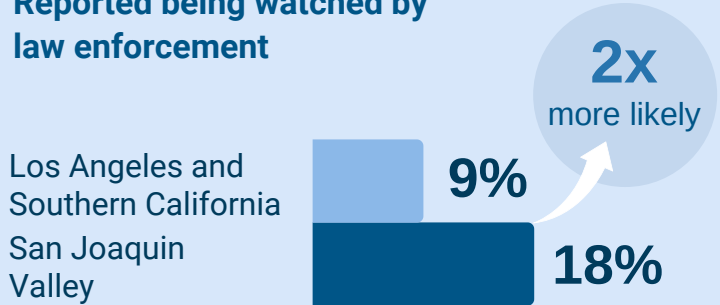
A new UCLA Center for Health Policy Research study examines Latinx and Asian immigrants' experiences with local law enforcement agencies or immigration enforcement authorities in three California regions: the Bay Area, Los Angeles and Southern California, and the San Joaquin Valley.

Immigrants in the San Joaquin Valley had higher rates of negative experiences compared with immigrants in the Bay Area or in Los Angeles/Southern California

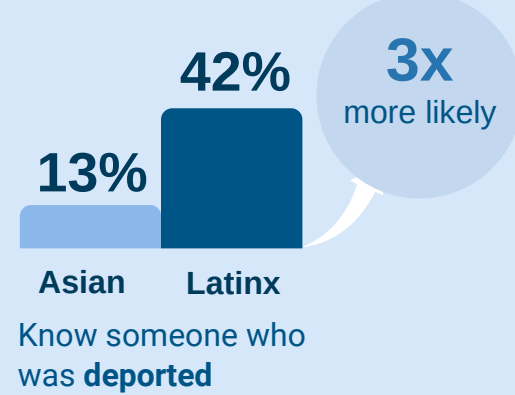
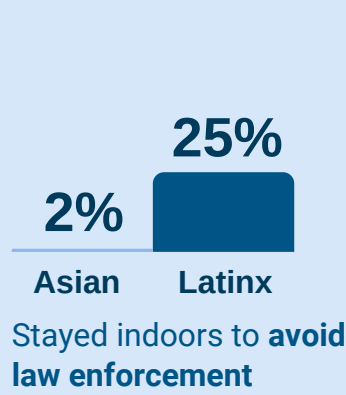
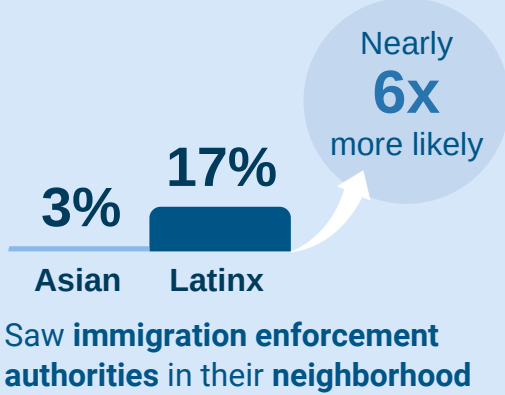
Saw enforcement authorities in their neighborhood



Reported being watched by law enforcement



Latinx immigrants had higher rates of negative experiences compared to Asian immigrants in the San Joaquin Valley, Bay Area, or in Los Angeles/Southern California



IMPLICATIONS:

- Restrictive immigration policies have different impacts across California regions and immigrant groups.
- California's policies to disentangle local law enforcement and federal immigration enforcement have been inconsistently implemented across regions.



One of a series of fact sheets that used data from the **Research on Immigrant Health and State Policy Study (RIGHTS)**, a follow-on survey of the 2018 and 2019 California Health Interview Surveys (CHIS), which included 2,000 Latinx and Asian immigrant respondents. Read the fact sheet: <https://ucla.in/3q19sqz>