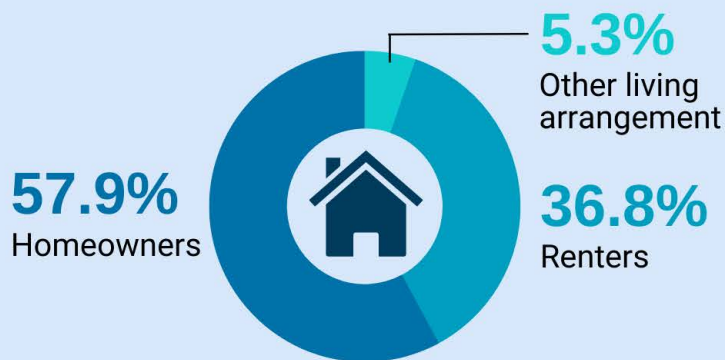


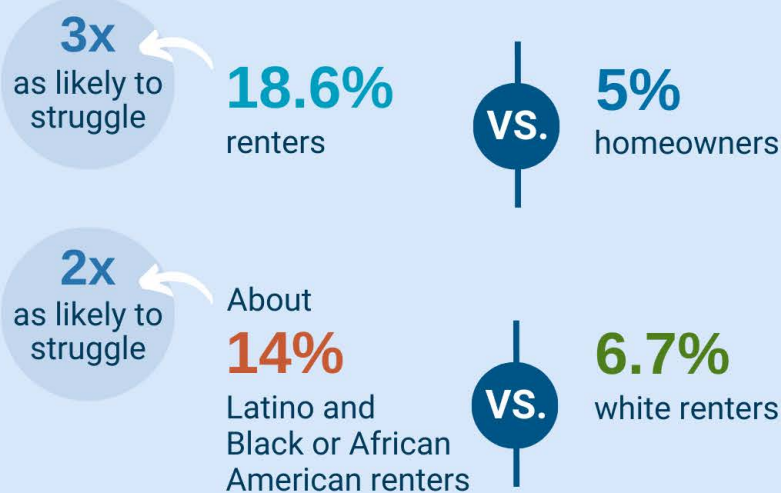
Housing issues during COVID-19 and health care cutbacks

California adults who struggled to pay for housing or had unstable housing during the COVID-19 pandemic in 2021 were more likely to delay or cut back on health care and other practices that improve health, according to a study by the UCLA Center for Health Policy Research.

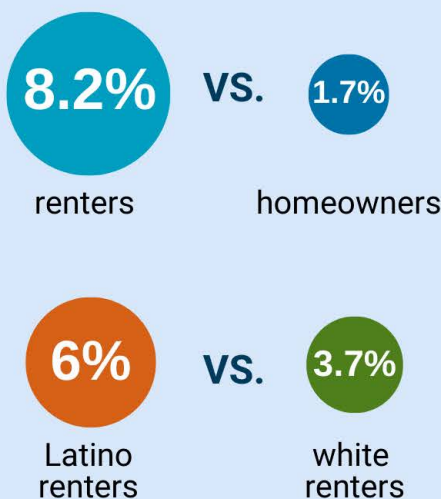
California housing demographics: Who lived where?



Who struggled to afford housing due to COVID-19?

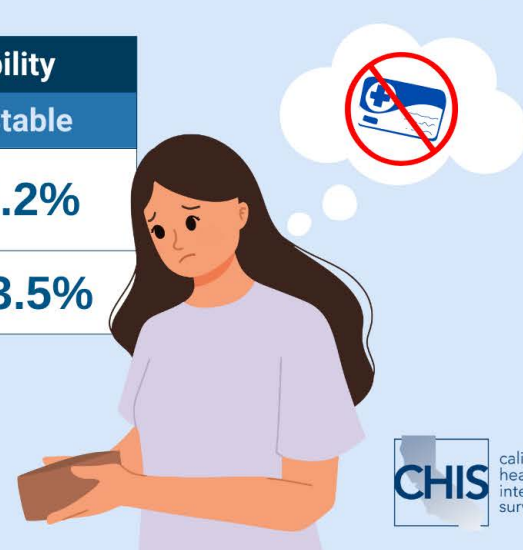


Who had unstable housing during the pandemic in 2021?



How housing issues during the COVID-19 pandemic were associated with adult health in 2021

	Ability to pay for housing		Housing stability	
	Struggled	Did not struggle	Unstable	Stable
Lacked health insurance	15.5%	6.8%	16.7%	7.2%
Delayed care	33.6%	19.5%	34.3%	23.5%



Note: Does not include populations in correctional facilities, dormitories, skilled nursing facilities, or people experiencing homelessness.

Source: 2021 California Health Interview Survey
Read the policy brief: <https://ucla.in/3ILKWml>