

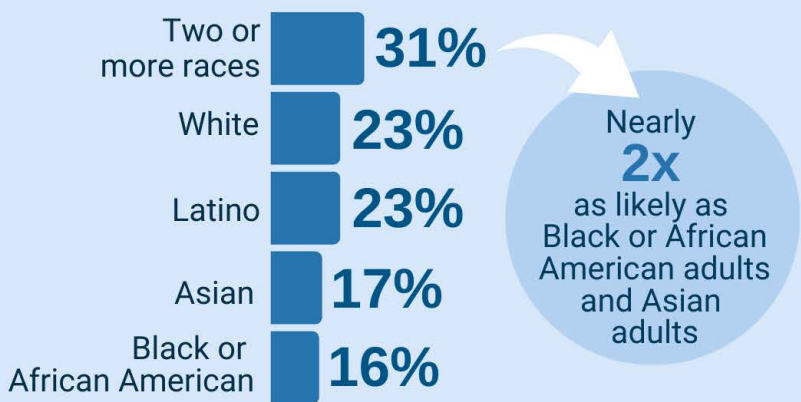
Increased Household Conflict During COVID-19 Stay-at-Home Orders

In March 2020, the lives of 40 million people in California were disrupted as many businesses and schools shuttered due to the COVID-19 pandemic stay-at-home orders. This infographic examines increases in interpersonal conflict, snapping/yelling, or physical punishment by various sociodemographic factors.

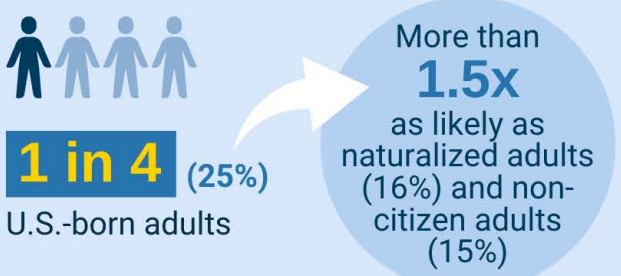
Who experienced any increase in interpersonal conflict, snapping/yelling, or physical punishment in the household during stay-at-home orders?



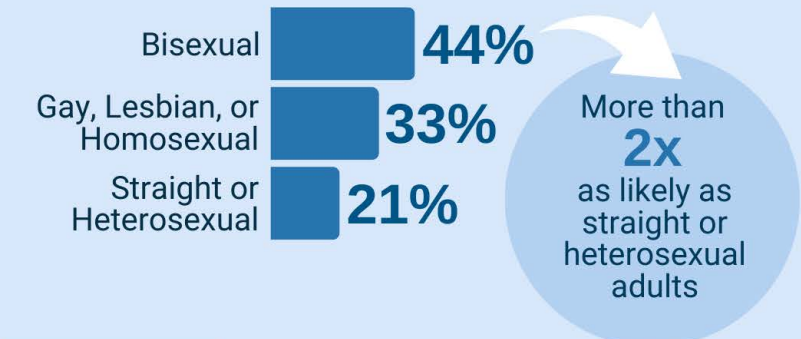
By race and ethnicity



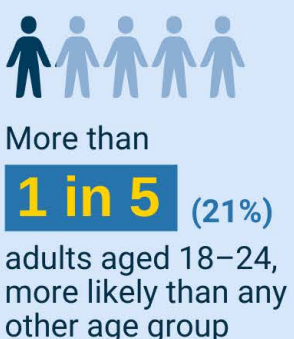
By citizenship status



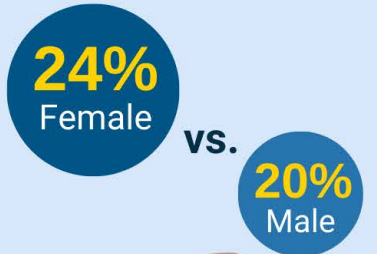
By sexual orientation



By age



By gender



By family type

Single adults without children	Single adults with children	Married adults with children	Married adults without children
25%	25%	24%	16%

