



THE CALIFORNIA HEALTH INTERVIEW SURVEY (CHIS)

The Center's 2019 Health Policy Seminar Series:

CHIS 2018 Data Release

Ninez A. Ponce, CHIS Principal Investigator, CHPR Director
Todd Hughes, CHIS Director

October 24, 2019

www.chis.ucla.edu

Stay informed:

View recent recorded seminars:

www.healthpolicy.ucla.edu/newsroom

Get copies of today's slides:

healthpolicy@ucla.edu

Subscribe to “Health Policy E-News Blasts”:

www.healthpolicy.ucla.edu/newsletter

THE CALIFORNIA HEALTH INTERVIEW SURVEY (CHIS)

CHIS 2018 Data Release

Ninez A. Ponce, CHIS Principal Investigator, CHPR Director
Todd Hughes, CHIS Director

October 24, 2019

What is CHIS?

- Nation's largest state health survey
- Most comprehensive source of health information on Californians
- Comprehensive range of health topics
 - Health Status
 - Health Conditions
 - Mental Health
 - Oral Health
 - Health Behaviors
 - Access to & Use of Health Care
 - Health Insurance
 - Employment
 - Respondent Characteristics

California Health Interview Survey (CHIS)

- California's assessment tool to meet state and local needs for population-based health data
 - Policy analysis, development and advocacy
 - Service and program planning
 - Research
- CHIS is a collaborative project, funded by federal and state health agencies, California and national foundations, and others
(See healthpolicy.ucla.edu/chis/about/Pages/funds.aspx)

CHIS Main Objectives

- Provide Health and Health-Related Estimates:
 1. at local-level for counties, cities with health departments, and statewide
 2. for California's major racial/ethnic groups and (if possible) some smaller ethnic groups
 3. disseminate to wide audiences

CHIS Survey

- Computer-Assisted Telephone Interview (CATI)
- CHIS interviews
 - An adult (age 18+) in the household, adolescent (age 12-17) if present, and child (age 0-11) if present
- CHIS conducted in multiple languages
 - English, Spanish, Chinese in both Cantonese and Mandarin dialects, Korean, Vietnamese, and Tagalog
 - Translations available on CHIS website
([http://healthpolicy.ucla.edu/chis/design/Pages/Questionnaires%20\(Translated\).aspx](http://healthpolicy.ucla.edu/chis/design/Pages/Questionnaires%20(Translated).aspx))

2018 Data Collection Results

CHIS 2018 RACIAL/ETHNIC GROUP SAMPLES BY AGE

| | ADULT (Age 18+) | ADOLESCENT (Ages 12-17) | CHILD (Ages 0-11) |
|----------------------------------|--------------------|----------------------------|----------------------|
| Total Sample Size | 21,177 | 432 | 1,586 |
| RACE* | | | |
| White | 15,009 | 275 | 992 |
| Asian | 1,914 | 40 | 131 |
| Native Hawaiian/Pacific Islander | 107 | 6 | 7 |
| African American | 1,254 | 21 | 96 |
| American Indian/Alaska Native | 752 | 22 | 67 |
| Other single race | 1,295 | 22 | 102 |
| Two or More Races | 846 | 46 | 191 |
| LATINO ETHNICITY | | | |
| Latino | 4,709 | 148 | 647 |
| Non-Latino | 16,468 | 284 | 939 |

What's New in the 2018 CHIS?

NEW ADULT QUESTIONS

- Non-cigarette tobacco use
- Tobacco product and e-cigarette flavors
- Secondhand smoke exposure and rules about smoking/vaping
- Well-being scale

NEW (REINSTATED) TEEN QUESTIONS

- Condition of teeth and missed school due to dental problems

Note: These items are all available in all CHIS data products including Public Use Files (PUFs)

What's New in the 2017-2018 CHIS?

California Health Interview Survey

Making
California's
Voices
Heard on
Health



10960 Wilshire Blvd.
Suite 1550
Los Angeles, CA
90024
t: 310.794.0909
f: 310.794.2686

What's New and Notable in CHIS 2017-2018

This document describes new and notable design features and data collected in CHIS 2017-2018. CHIS data users should review the information below and detailed online documentation before analyzing or reporting CHIS data. For more documentation on CHIS methods, please visit chis.ucla.edu/chis/design/Pages/methodology.aspx

Data Collection Timeline

CHIS 2017-2018 data were collected between June 2017 and January 2019. Approximately half of adult interviews were conducted from landline phone numbers and half from cell phone numbers.

New Vendor

As the result of a competitive bidding process, SSRS conducted the CHIS 2017-2018 data collection under contract with the UCLA Center for Health Policy Research.

New and Updated Survey Questions

Survey questions are added, removed, and modified in each two-year cycle of CHIS to meet stakeholders' needs and monitor emerging public health concerns. Questions are removed from the interview to reduce its length and save data collection costs when topics are no longer relevant for public health

Continued...

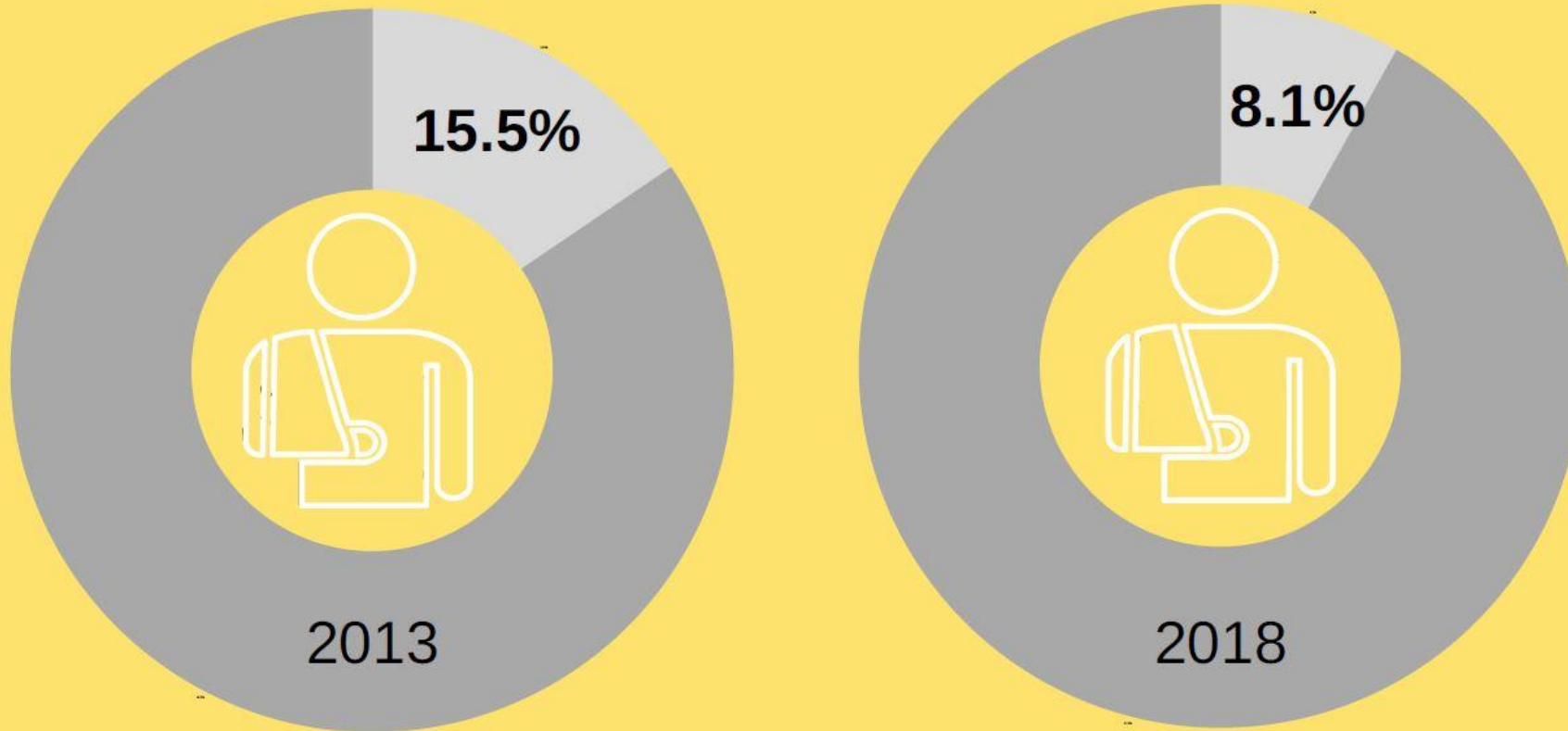
Noteworthy Additions to CHIS 2017-2018

<http://healthpolicy.ucla.edu/chis/design/Pages/methodology.aspx>

CHIS Data Provide Insights on ACA

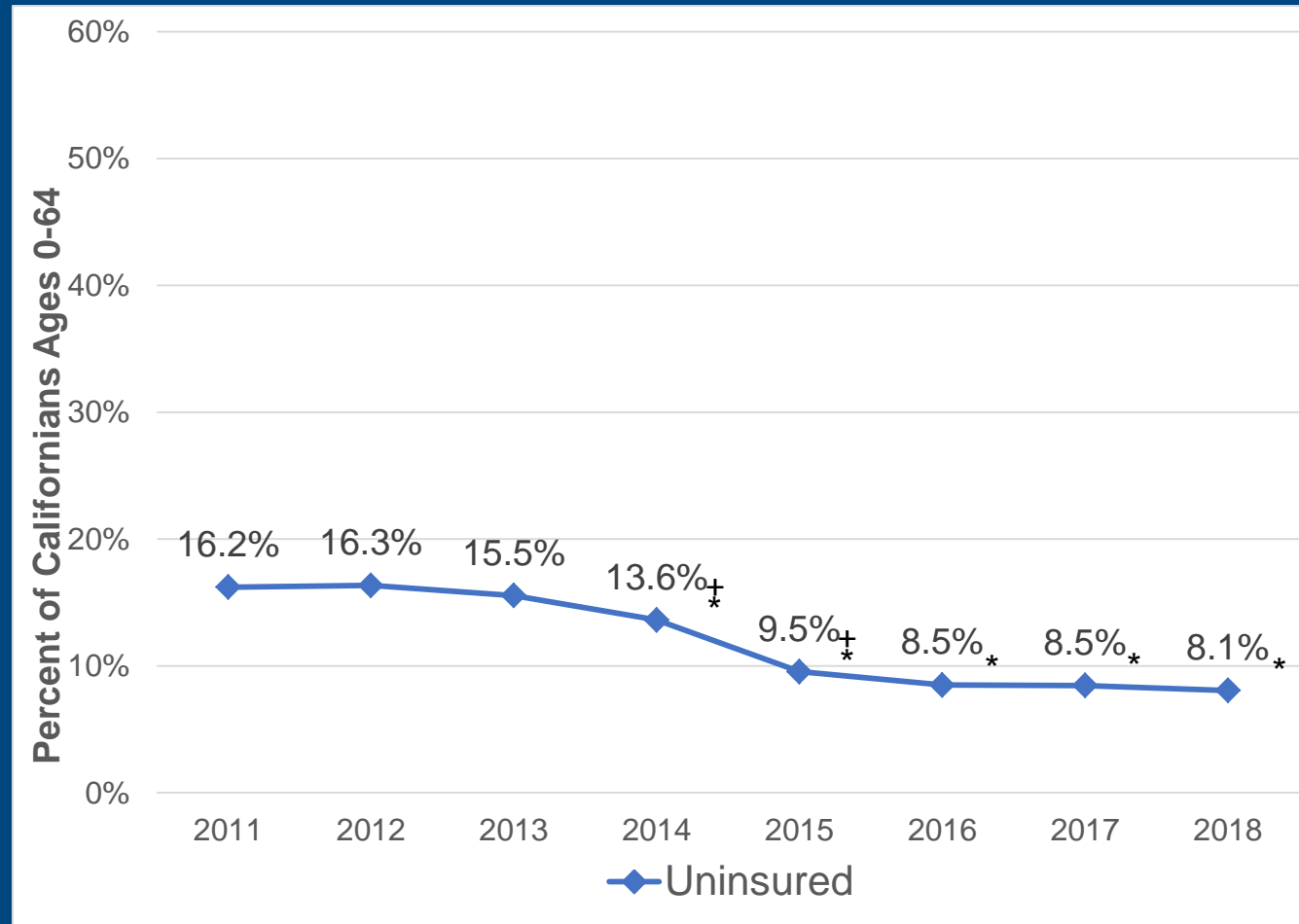
- Issue Brief: “Californians Maintain Health Insurance Coverage Despite National Trends,” Tara Becker and Ninez Ponce, October 2019
- Many more publications can be found at healthpolicy.ucla.edu

Fewer Californians under age 65 **lacked** insurance in 2018



Source: 2013 and 2018 California Health Interview Survey

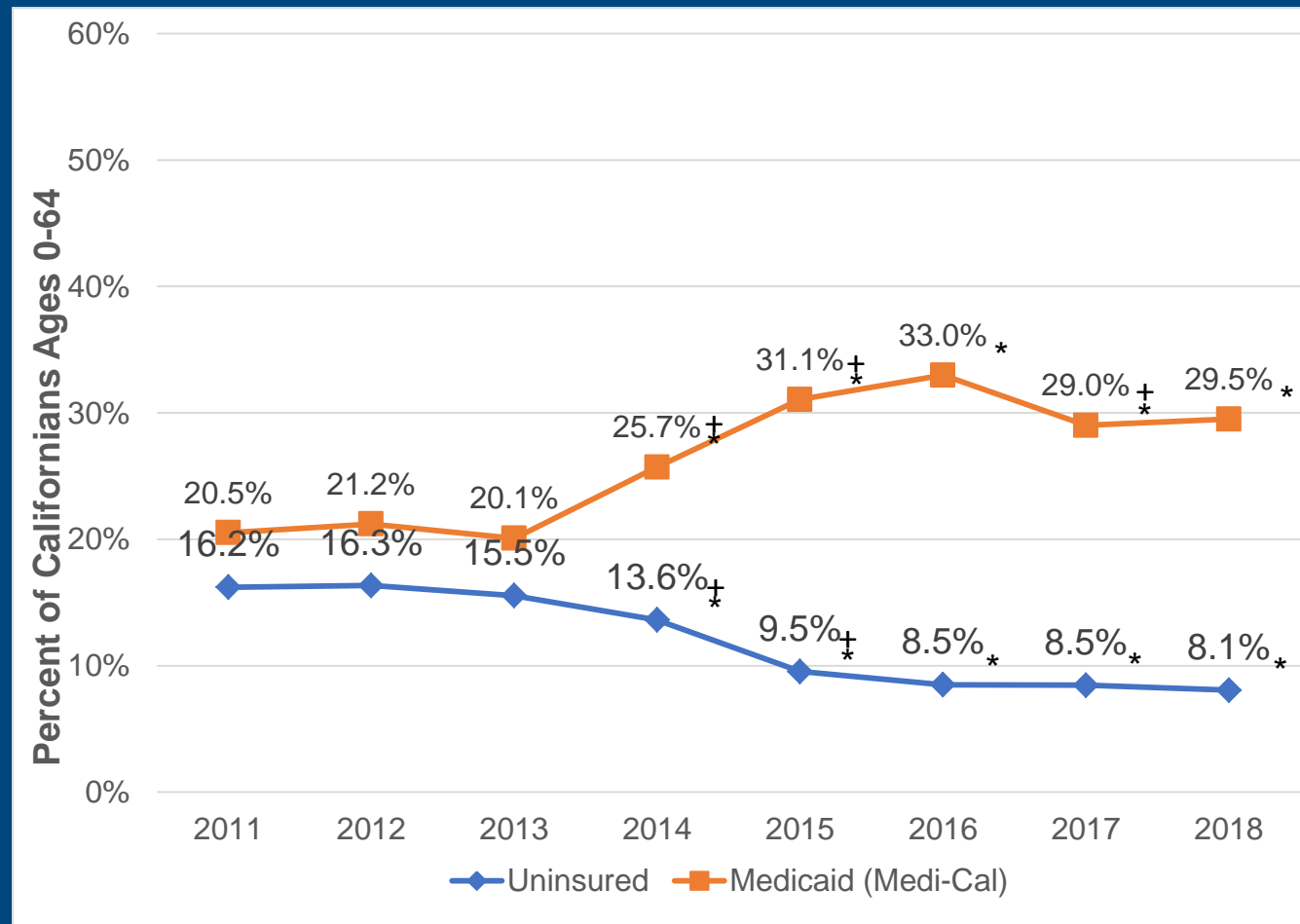
Uninsured rate among All Nonelderly Persons, Ages 0 - 64, California, 2011-2018



† Estimate differs significantly from previous year at $p < 0.05$.
 * Estimate differs significantly from 2013 at $p < 0.05$.

Sources: 2011 – 2018 California Health Interview Surveys, Becker, Ponce, 2019

Medi-Cal and Uninsured rates among All Nonelderly Persons, Ages 0 - 64, California, 2011-2018

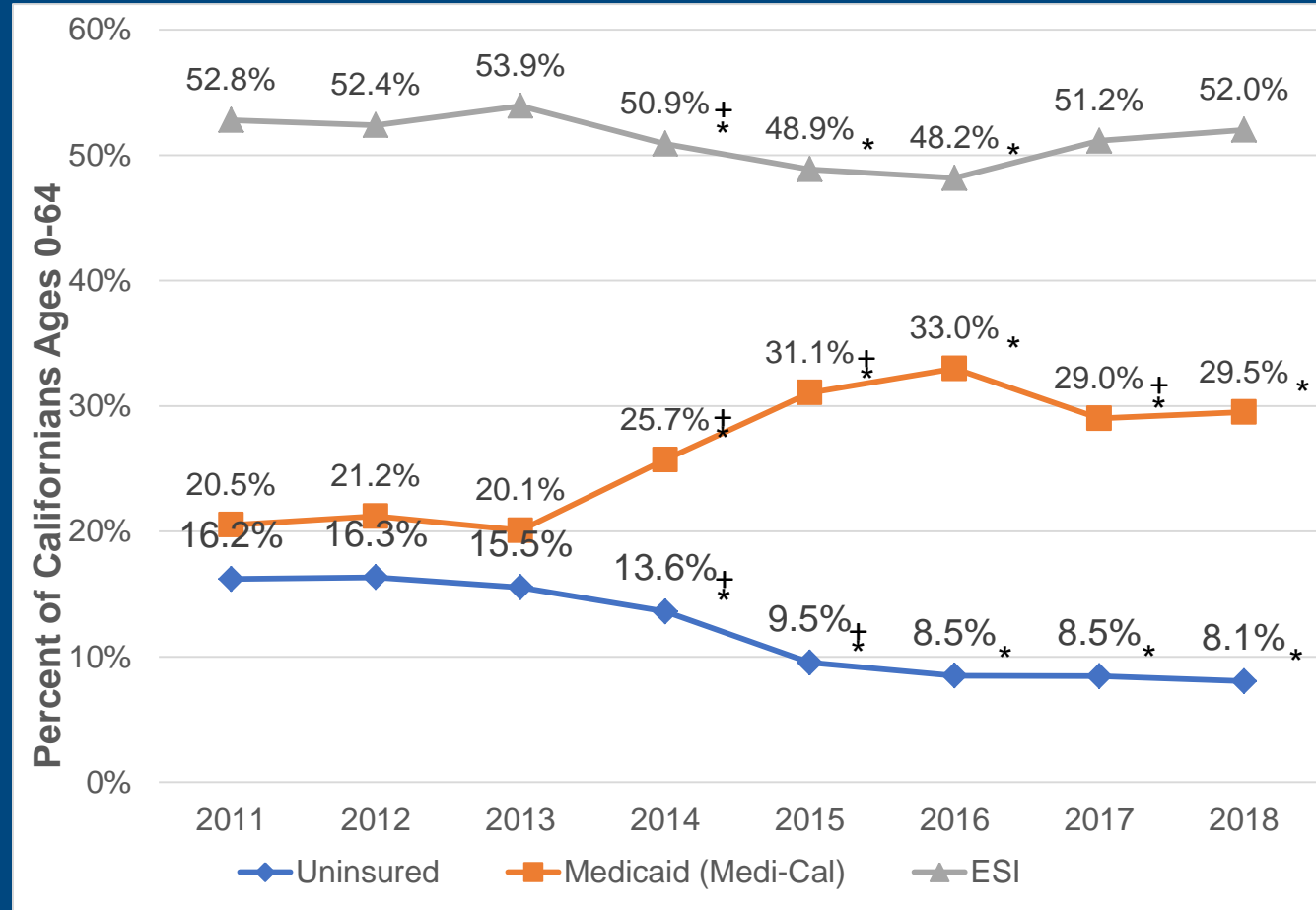


† Estimate differs significantly from previous year at p<0.05.

* Estimate differs significantly from 2013 at p<0.05.

Sources: 2011 – 2018 California Health Interview Surveys, Becker, Ponce, 2019

ESI, Medi-Cal and Uninsured rates among All Nonelderly Persons, Ages 0 - 64, California, 2011-2018

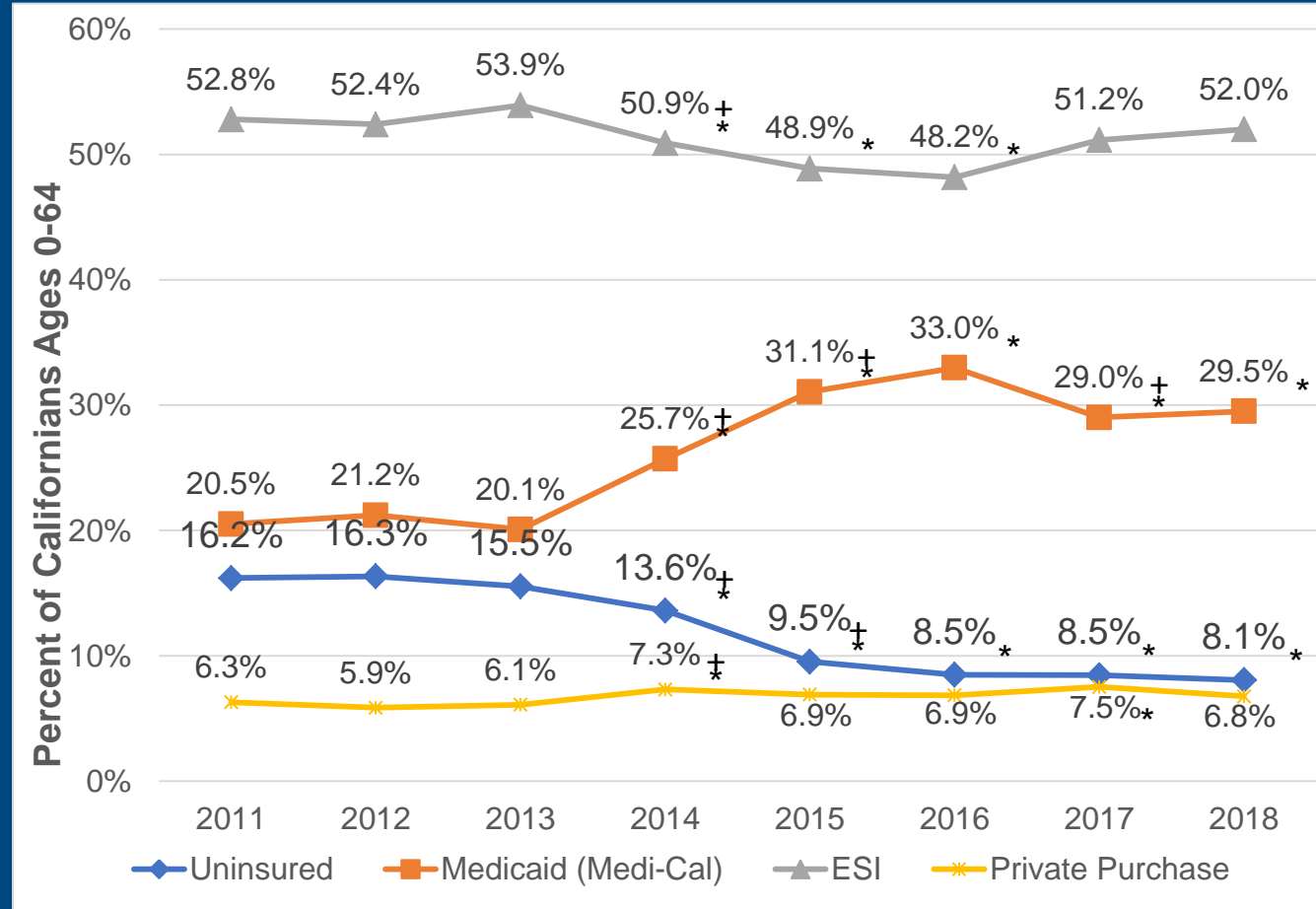


† Estimate differs significantly from previous year at p<0.05.

* Estimate differs significantly from 2013 at p<0.05.

Sources: 2011 – 2018 California Health Interview Surveys, Becker, Ponce, 2019

Private Purchase, ESI, Medi-Cal and Uninsured rates among All Nonelderly Persons, Ages 0 - 64, California, 2011-2018

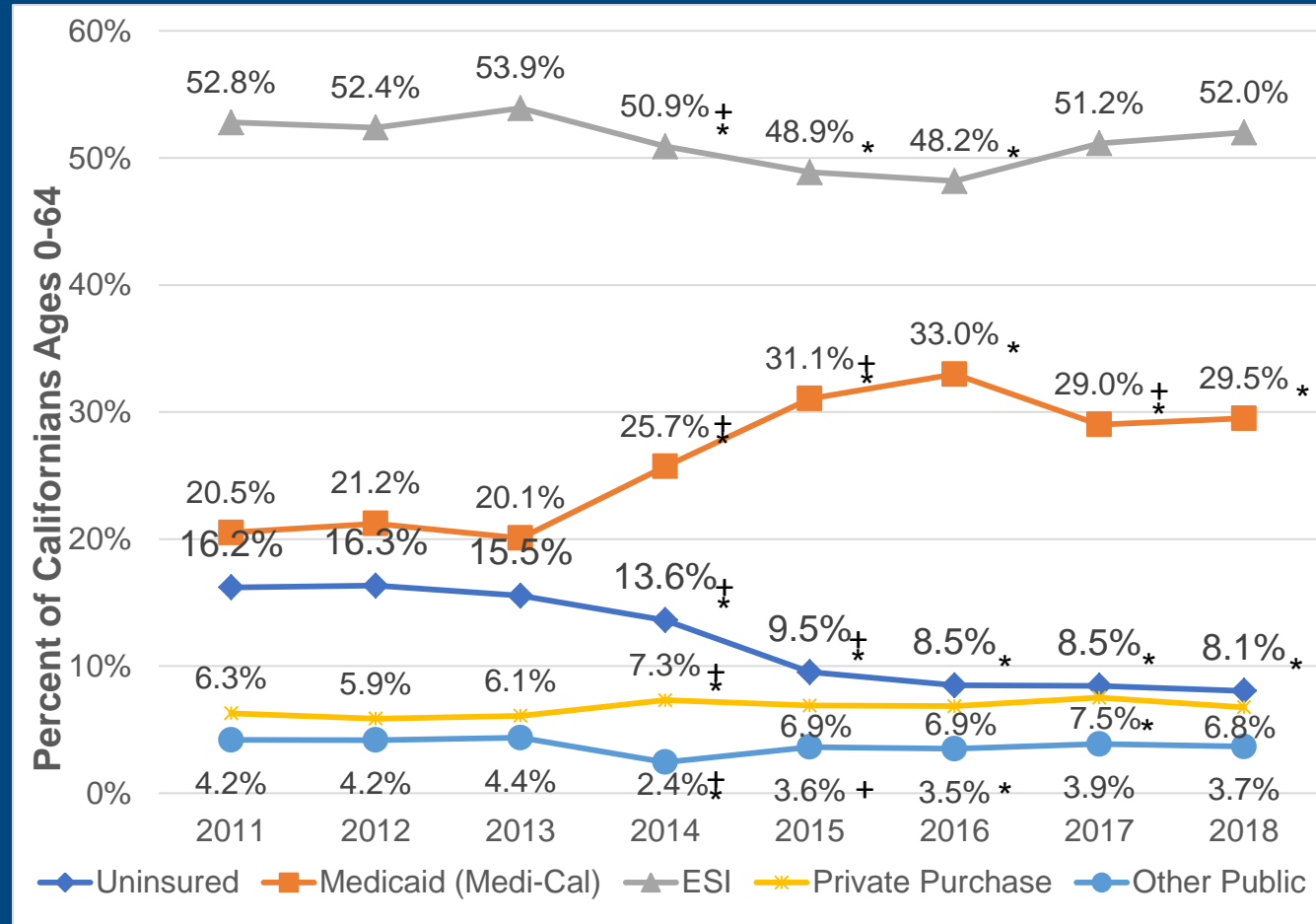


† Estimate differs significantly from previous year at p<0.05.

* Estimate differs significantly from 2013 at p<0.05.

Sources: 2011 – 2018 California Health Interview Surveys, Becker, Ponce, 2019

Current Health Insurance Coverage among All Nonelderly Persons, Ages 0 - 64, California, 2011-2018

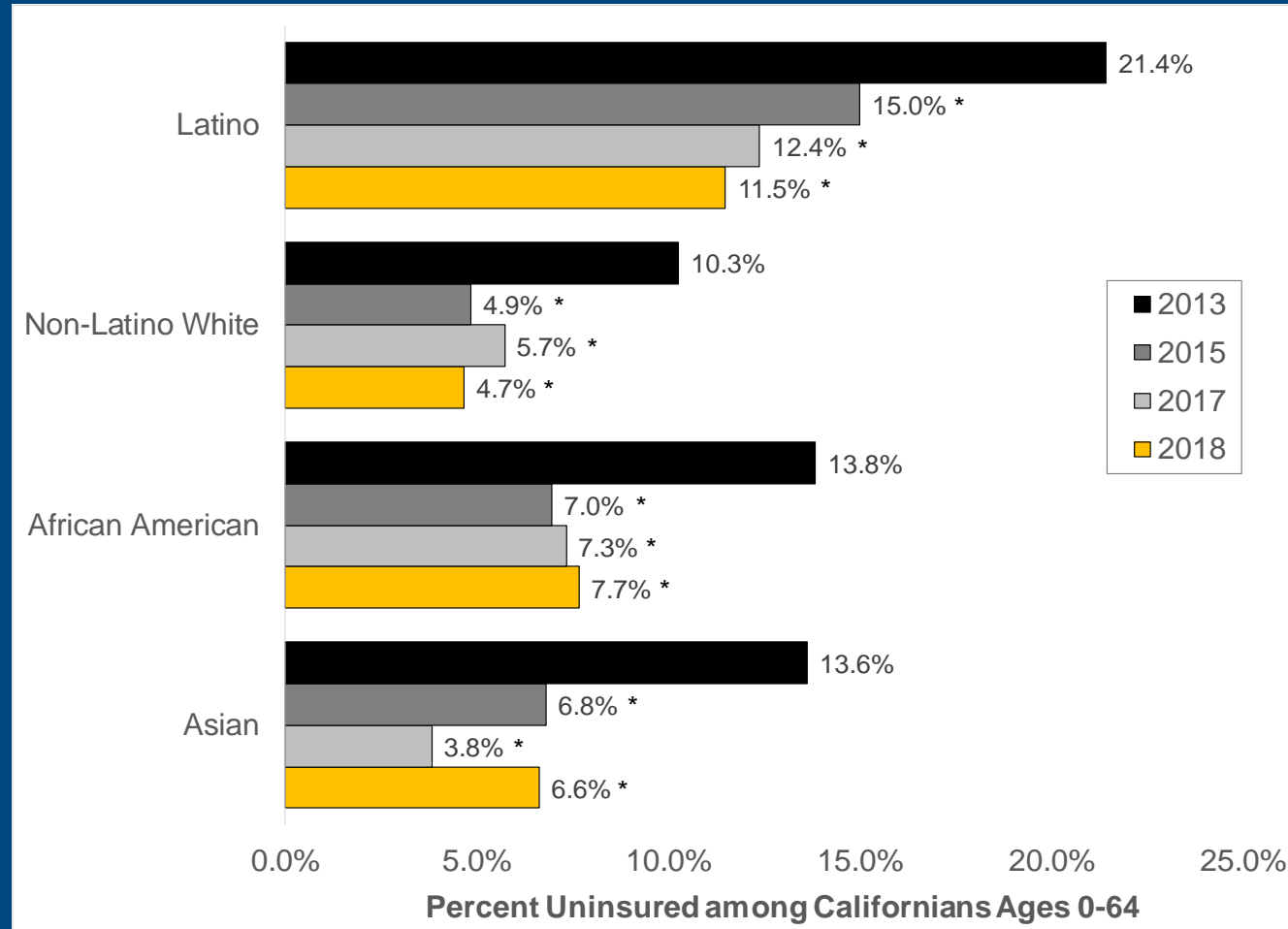


† Estimate differs significantly from previous year at p<0.05.

* Estimate differs significantly from 2013 at p<0.05.

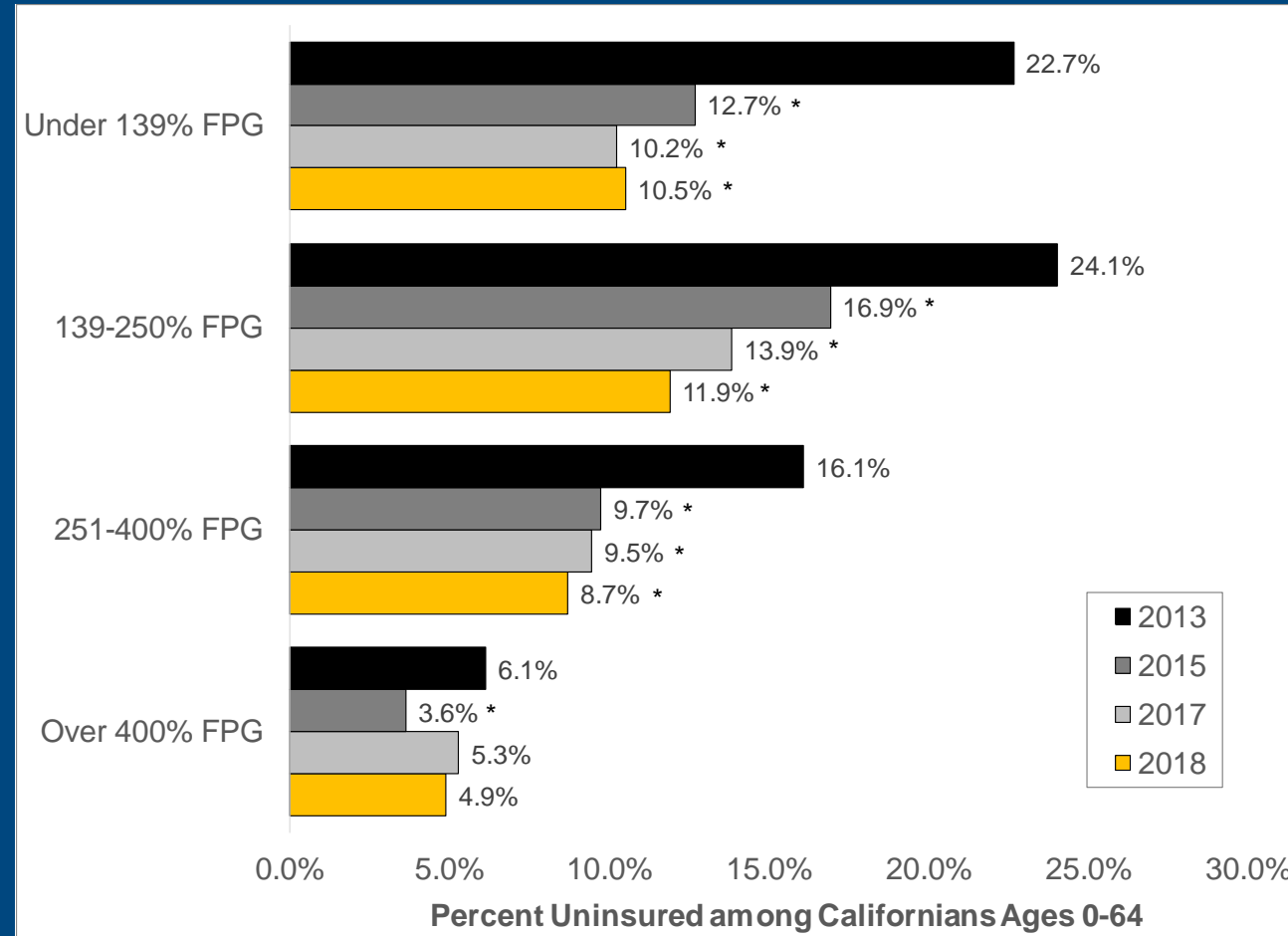
Sources: 2011 – 2018 California Health Interview Surveys, Becker, Ponce, 2019

Current Health Insurance Coverage by Race/Ethnicity among All Nonelderly Persons, Ages 0 - 64, California, 2013-2018



Sources: 2011 – 2018 California Health Interview Surveys, Becker, Ponce, 2019.
 Note: Other races not included because of small sample.

Current Health Insurance Coverage by Income among All Nonelderly Persons, Ages 0 - 64, California, 2013-2018



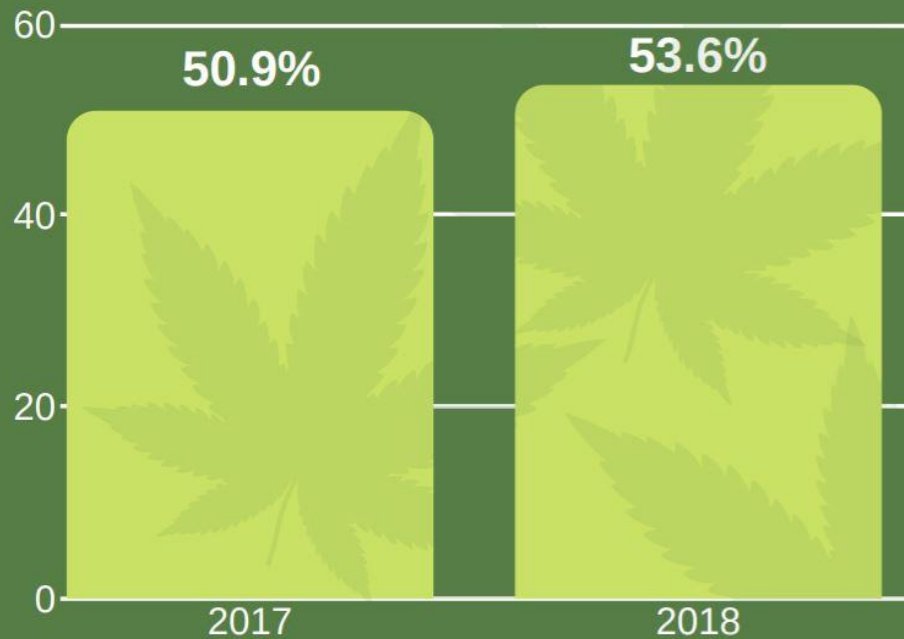
Sources: 2011 – 2018 California Health Interview Surveys, Becker, Ponce, 2019

Selected Mental Health Indicators for Adults in California, 2016-2018

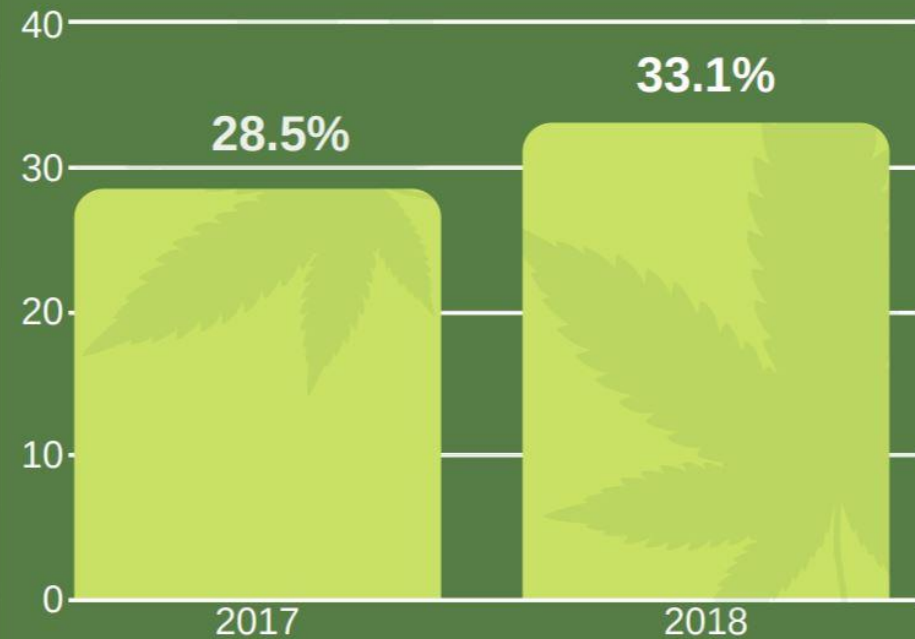
| Percent of adults that... | All Adults 18+ | | | Adults Age 18-24 | | |
|--|----------------|-------|-------|------------------|-------|------|
| | 2016 | 2017 | 2018 | 2016 | 2017 | 2018 |
| ...likely had psychological distress in the last year | 8.0 | 10.0* | 10.9 | 14.2 | 21.1* | 23.0 |
| ...needed help for emotional/mental or alcohol/drug problem in the last year | 16.4 | 18.5* | 21.2* | 22.4 | 30.0* | 33.2 |
| ...saw any healthcare provider for emotional/mental or alcohol/drug problem in the last year | 13.4 | 15.2 | 16.8 | 14.8 | 21.6* | 22.0 |
| ...ever seriously thought of committing suicide | 9.3 | 11.6* | 13.4* | 14.1 | 18.6 | 21.4 |

*Statistically significant increase vs. previous year
 Sources: 2016 – 2018 California Health Interview Surveys

More adults are using pot and using it more often



Calif. adults who have ever used pot



Of those who ever used pot, used within the past month

Source: 2017-2018 California Health Interview Survey

Percent of Adults Age 18+ that Have Used Marijuana in Past 30 Days by California County, 2018

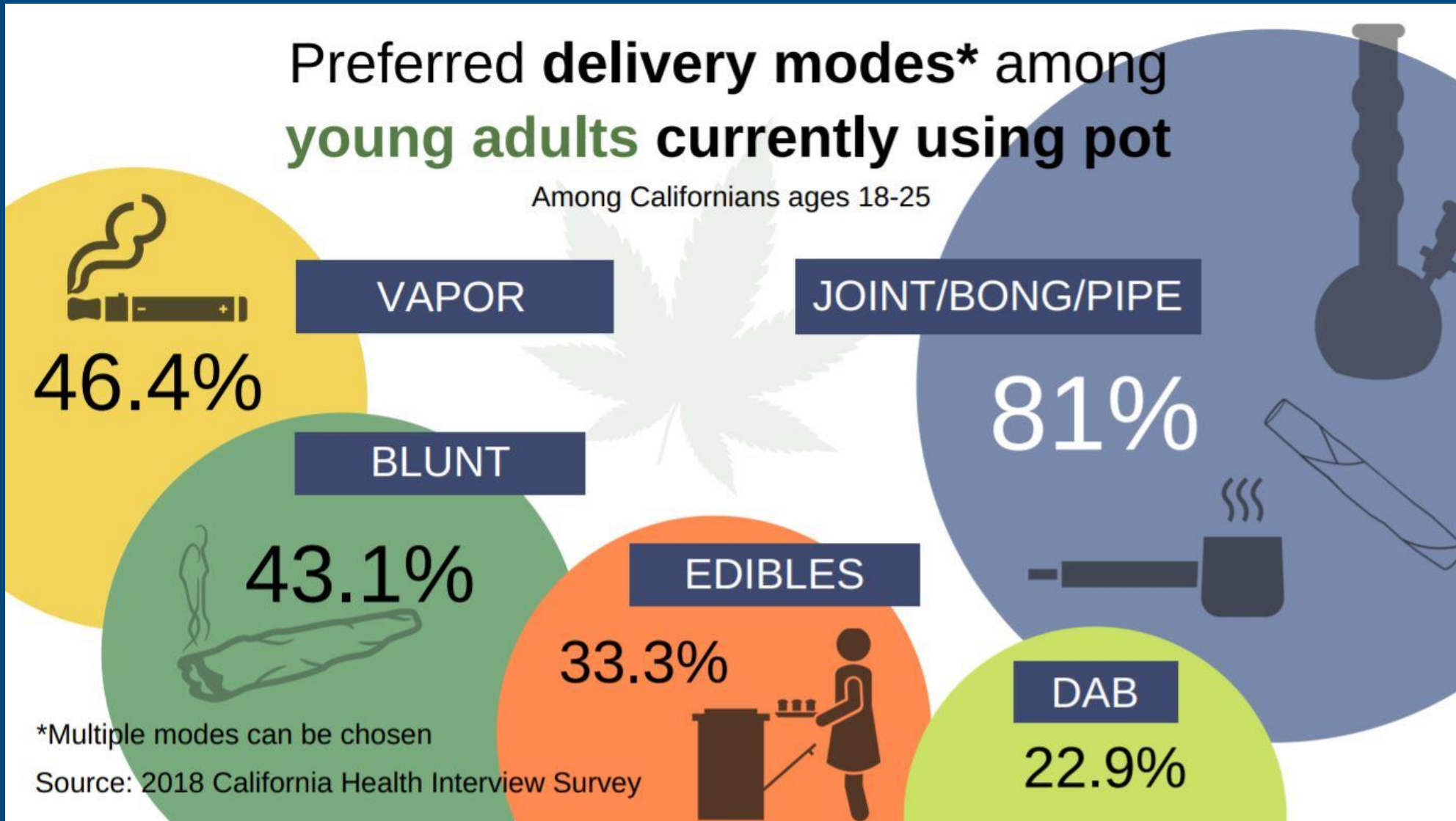
Top 10 Counties

| | |
|---------------|------|
| INYO | 42.0 |
| SAN BENITO | 40.6 |
| HUMBOLDT | 36.9 |
| TUOLUMNE | 36.9 |
| CALAVERAS | 34.5 |
| SANTA CRUZ | 34.4 |
| MENDOCINO | 33.1 |
| YOLO | 31.6 |
| SAN FRANCISCO | 30.2 |
| PLUMAS | 29.9 |

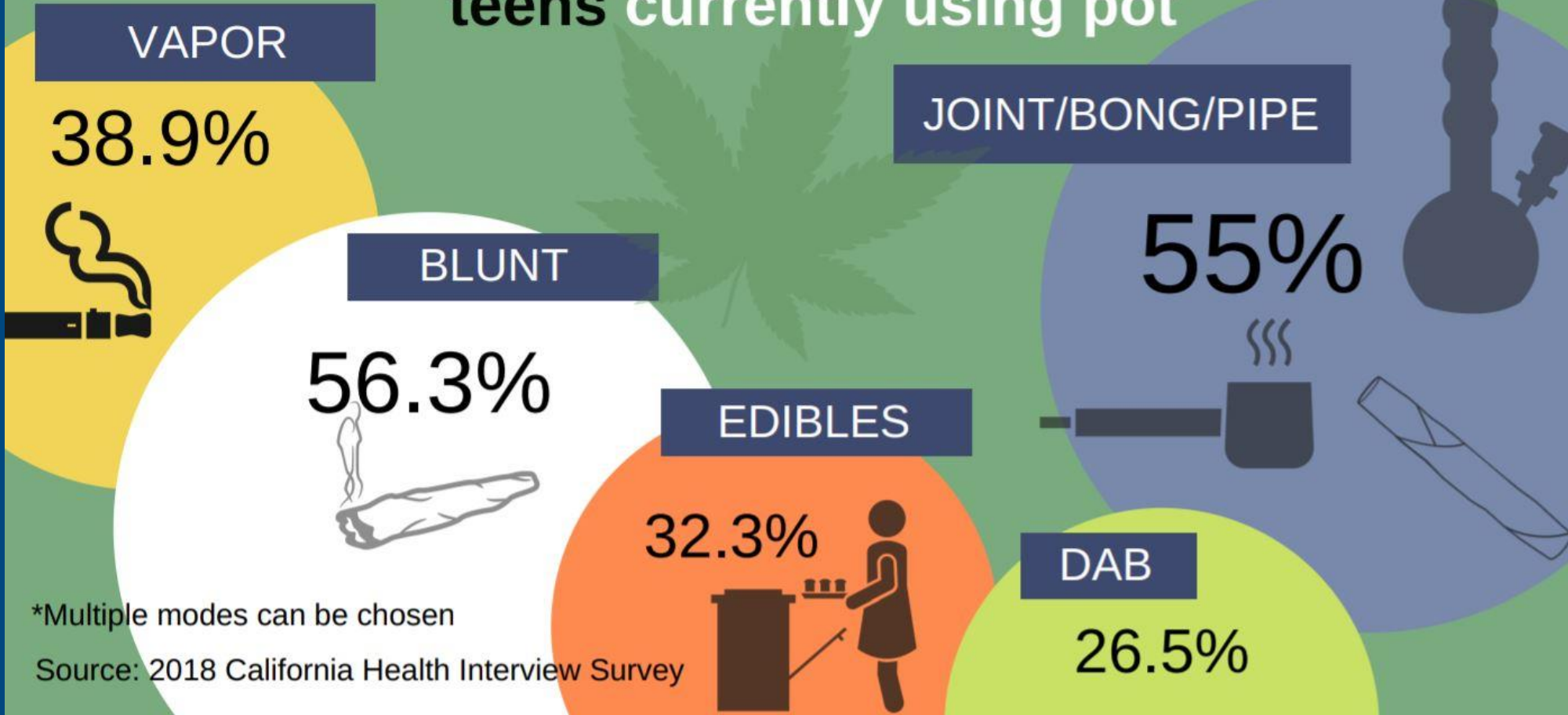
Bottom 10 Counties

| | |
|----------------|------|
| IMPERIAL | 8.5 |
| TULARE | 8.6 |
| TEHAMA | 12.5 |
| SANTA CLARA | 12.8 |
| SAN BERNARDINO | 13.4 |
| MADERA | 13.9 |
| SANTA BARBARA | 13.9 |
| ORANGE | 14.3 |
| DEL NORTE | 14.3 |
| KINGS | 14.8 |

Source: 2018 California Health Interview Survey



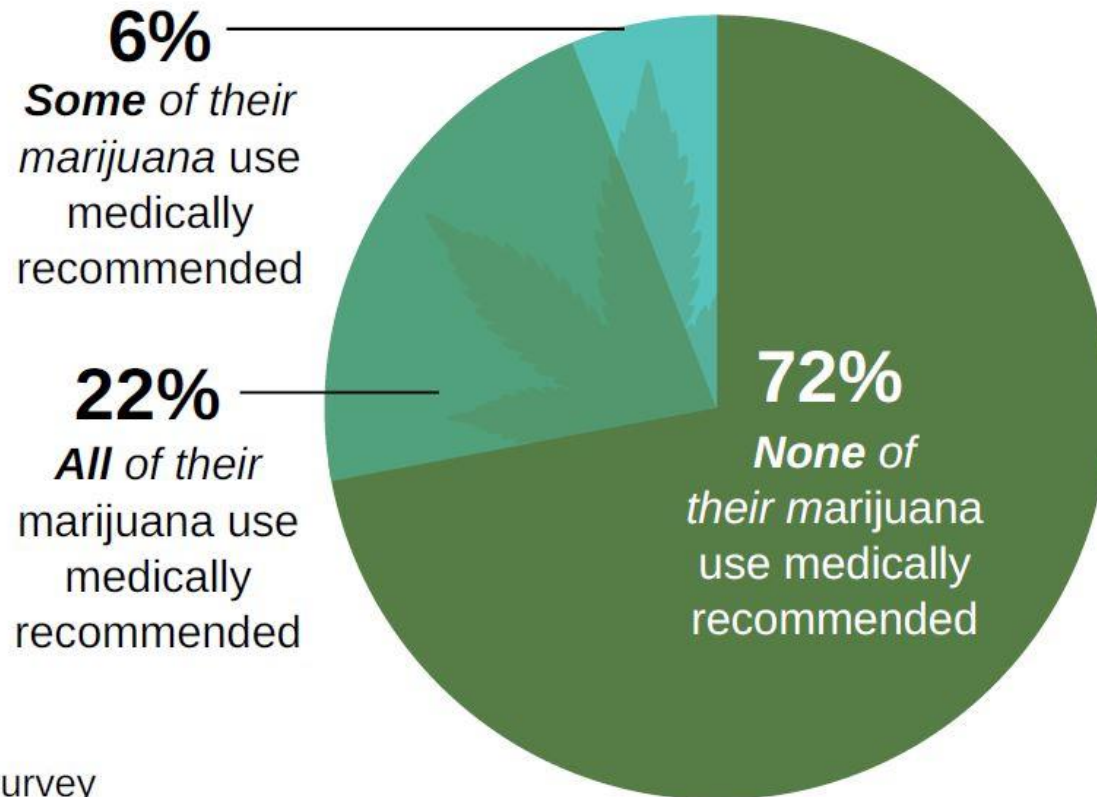
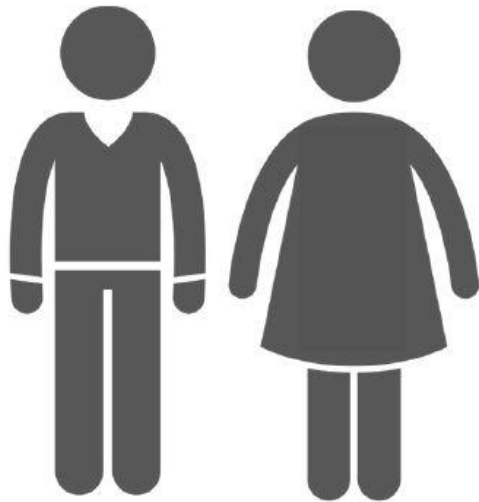
Preferred delivery modes* among California's teens currently using pot



*Multiple modes can be chosen

Source: 2018 California Health Interview Survey

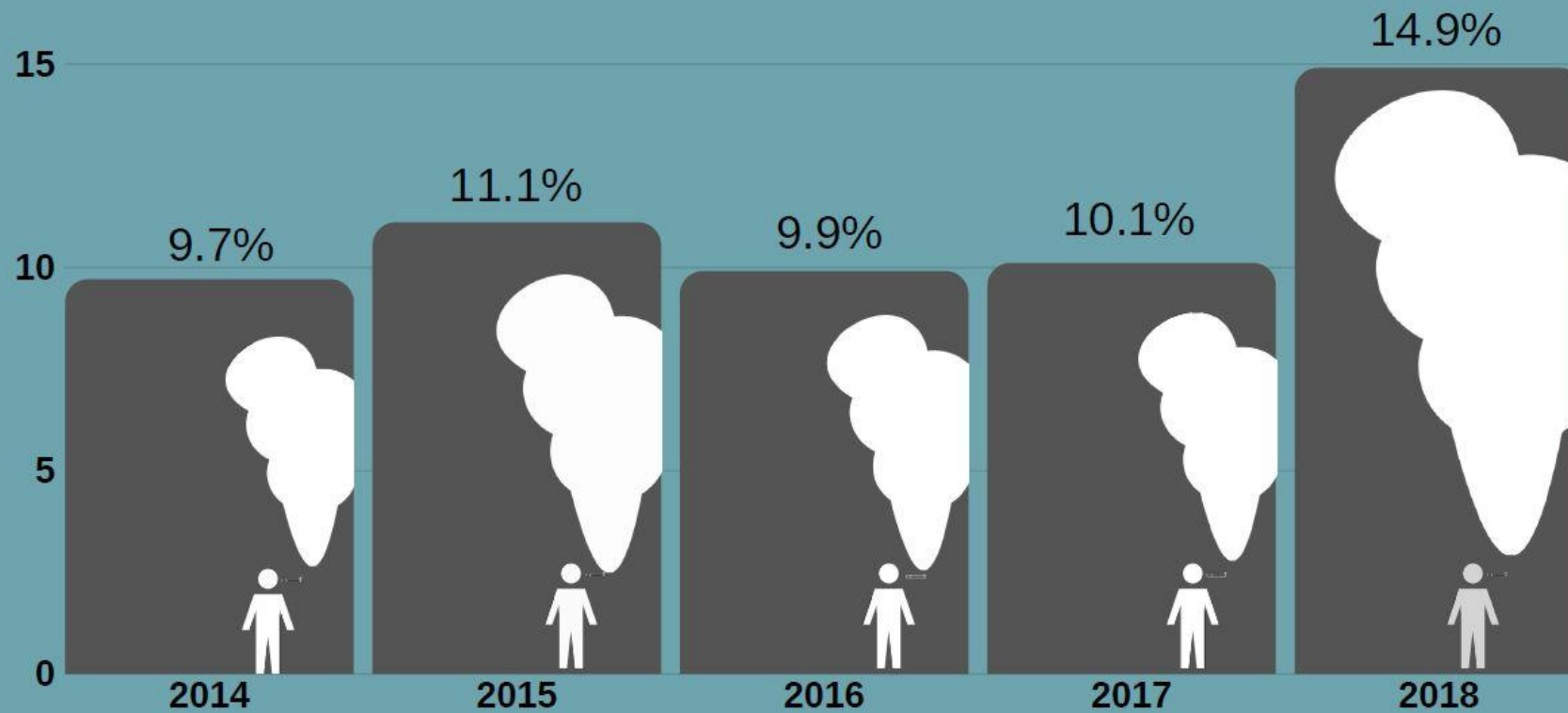
1.2 million Californians ages 18-25 **used marijuana** in past 30 days



Source: 2018 California Health Interview Survey

Percentage of young adult **e-cigarette users** jumped

Current vapers in California in 2018, ages 18-25

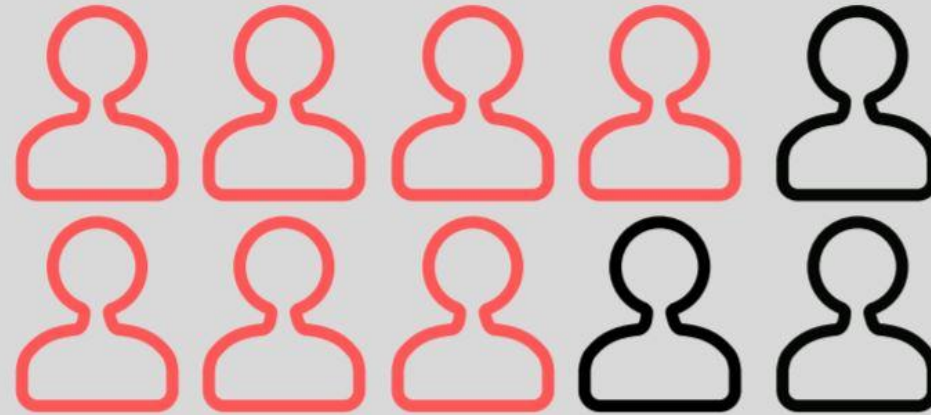


Source: 2014-2018 California Health Interview Survey

California's adult **tobacco chewers** & **vapers** prefer **flavored products**



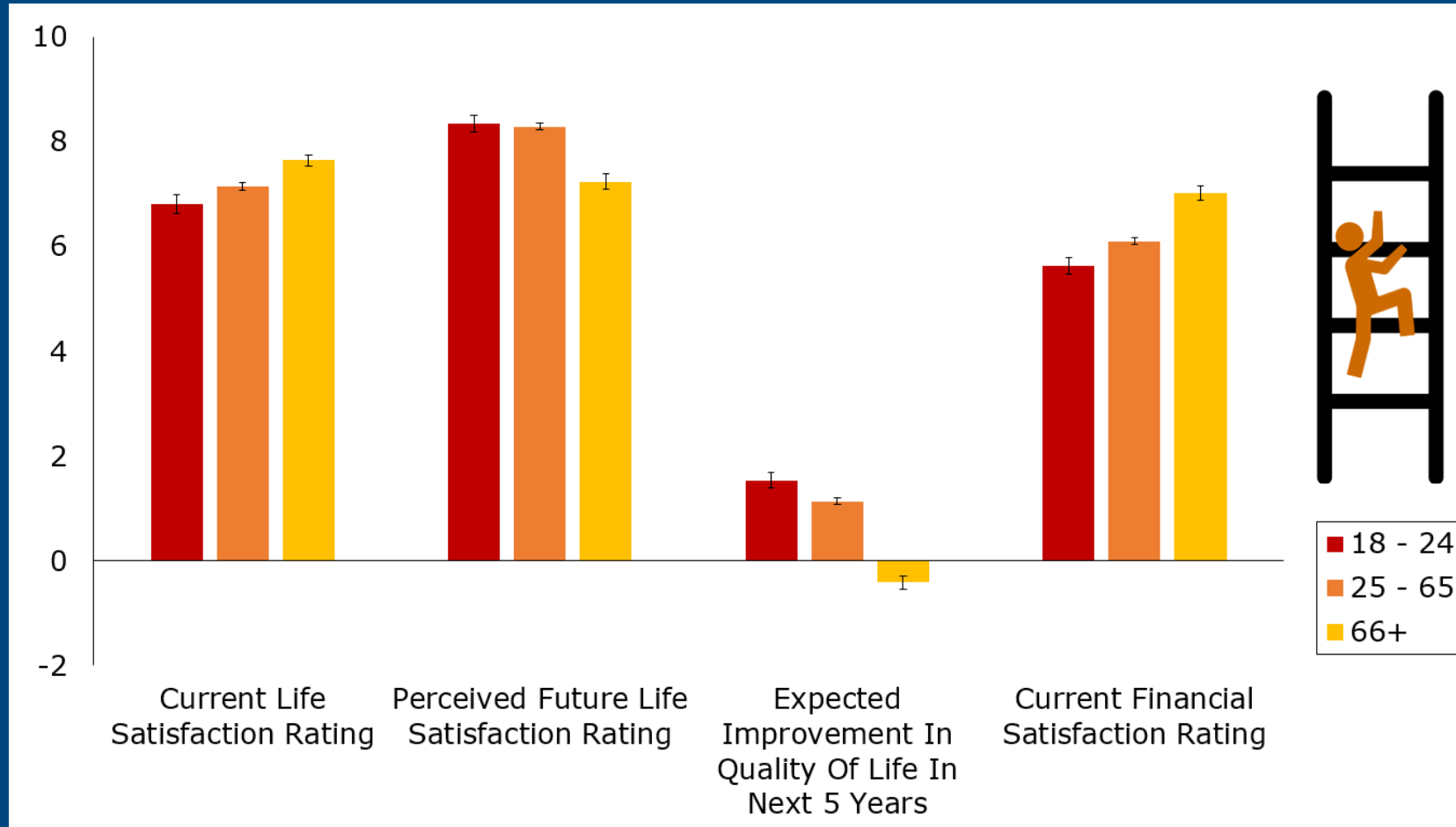
1 in 2 who "chew"
use **flavored** tobacco
(50.5%)



7 in 10 vapers
use **flavored** e-cigs
(71.9%)

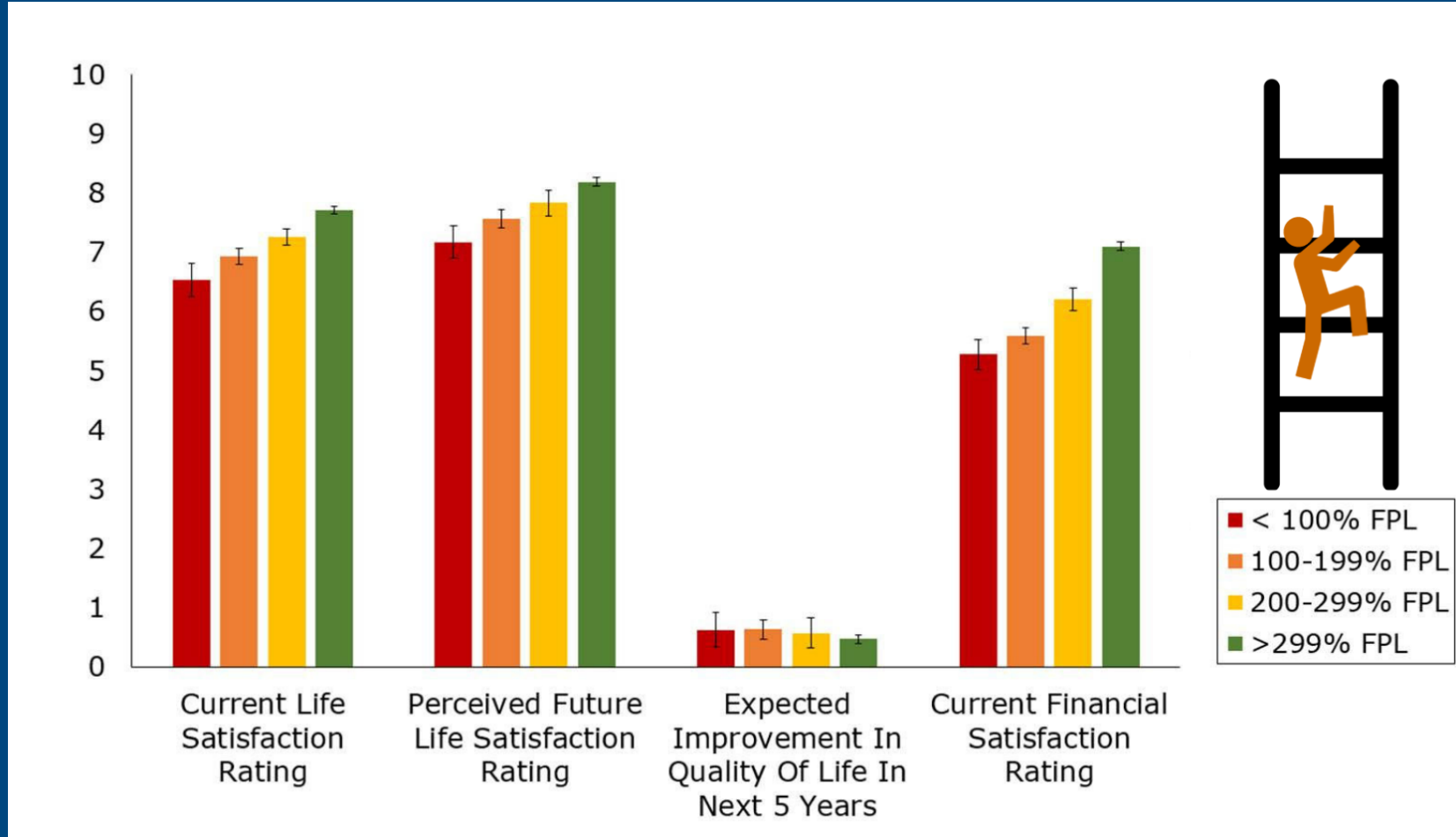
Source: 2018 California Health Interview Survey

Current and Expected Quality of Life, and Financial Quality of Life for Adults in California by Age, 2018



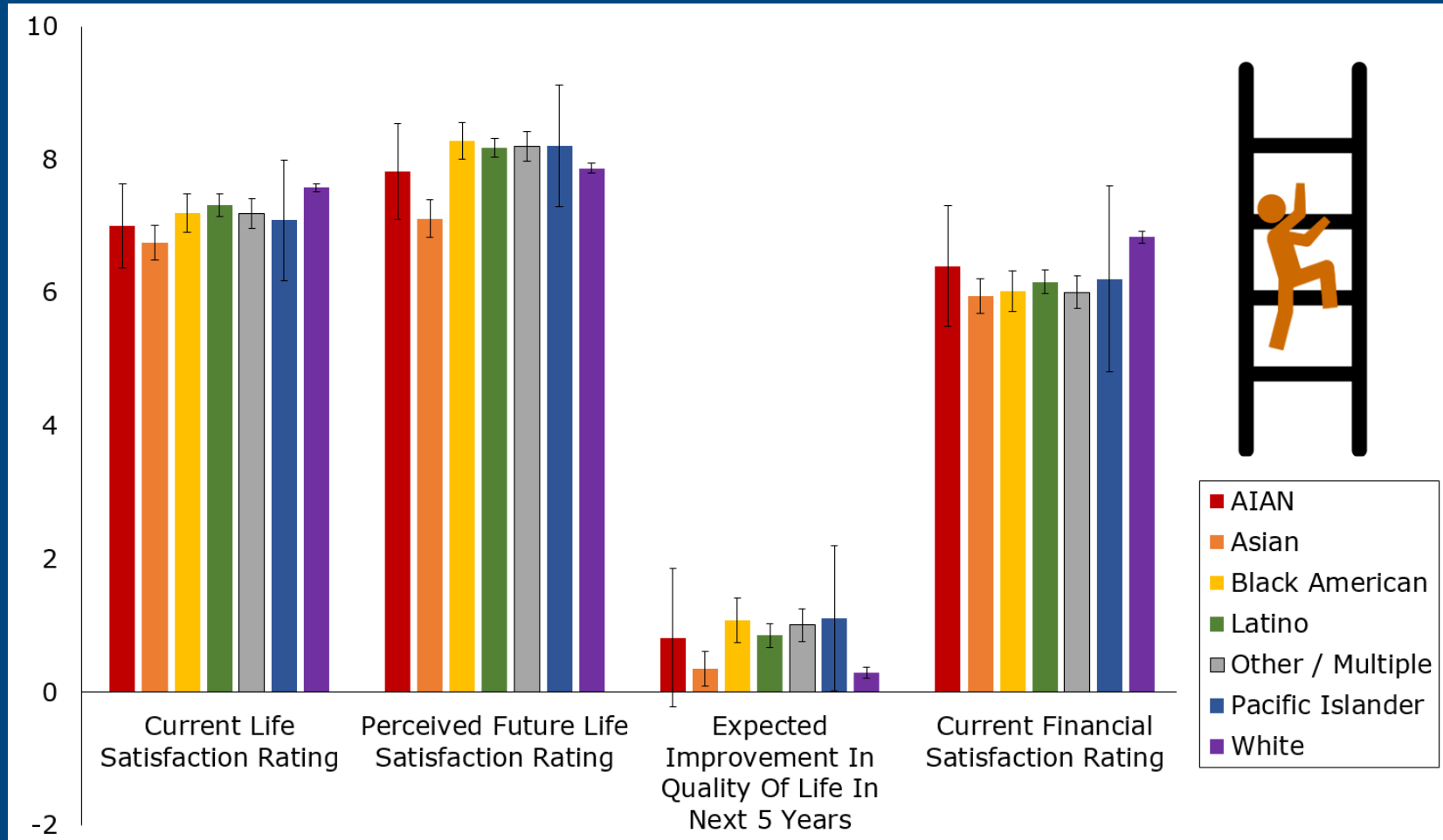
Source: 2018 California Health Interview Survey

Current and Expected Quality of Life, and Financial Quality of Life for Adults in California by Income, 2018



Source: 2018 California Health Interview Survey

Current and Expected Quality of Life, and Financial Quality of Life for Adults in California by Race/Ethnicity, 2018



Source: 2018 California Health Interview Survey

What are the CHIS dissemination aims?

1. Protect respondent confidentiality
2. Democratize access to data – put data into the hands of those who can use it
3. Reach a large and diverse audience across divides of technology, skills, and resources

CHIS Dissemination

CHIS DATA

HealthDATA — Data. Advocacy. Training. Assistance.

Health data capacity building

Data Access Center (DAC)

Secure network that holds data and analysis, protecting confidentiality.

Public Use File (PUF)

Available as free download in SAS, SPSS, and STATA format.

AskCHIS

Premiere online health data query tool. (Health Data All-Star – 2013)

AskCHIS Neighborhood Edition and AskCHIS NE en Español

Granular health data beyond counties (Small Area Estimates).

Health Profiles

Reports on CHIS' most requested health topics.

Data Across Geographies

AskCHIS

State

Counties

Assembly

Senate

Congress

Cities

Zip Codes

Coming soon: Census Tracts

Now with
2018
CHIS data!

Now with
2016
CHIS data!

AskCHIS
Neighborhood
Edition

(by geographic area only)

[Give us feedback](#)
[Export](#)
[Share](#)
[Help](#)

[My Account](#)

Location

State

Counties

Zip Codes

| | State | Counties | Zip Codes | |
|--|--|---------------------------------------|------------------------------------|------------------------------------|
| Delayed prescriptions/medical services (18+) | 19.3% (18.4% - 20.2%) 29,390,200 | 19.7% (19.5% - 19.8%) 7,705,911 | 23.8% (22.9% - 24.9%) 32,483 | 23.5% (17.0% - 29.9%) 68,473 |

Embed Map Download

Delayed prescriptions/medical services (18+)

Adults ages 18+ delayed or not getting needed prescription drugs or medical services past 12 months.

90024, 90025

Federal Poverty Level

| | | | |
|------------|--------------|--------------|-----------|
| 0-138% FPL | 139-249% FPL | 250-399% FPL | 400%+ FPL |
|------------|--------------|--------------|-----------|

Race/Ethnicity

| | | | | |
|-------------------------|--------------------|-------------------------|-------------------------|--------------------|
| Non-Hispanic White only | Hispanic or Latino | Non-Hispanic Asian only | Non-Hispanic Black only | Non-Hispanic Other |
|-------------------------|--------------------|-------------------------|-------------------------|--------------------|

Population

Female Male

| | | | | | | |
|-----|-------|-------|-------|-------|-------|------|
| 80+ | 65-79 | 40-64 | 25-39 | 18-24 | 12-17 | 0-11 |
|-----|-------|-------|-------|-------|-------|------|

90024, 90025

Estimate 23.5%

95% CI (17.0% - 29.9%)

Estimated population 68,473

AskCHIS On-Demand Learning Center

Fast, free tutorials on how to use *AskCHIS* and
AskCHIS Neighborhood Edition®

<http://healthpolicy.ucla.edu/chis/Pages/CHISTraining.aspx>

Brief: Presented in digestible, 10-minute segments!

Simple: Designed for those who have no experience with doing a query as well as those who want to brush up on their search skills.

Available 24/7: These pre-recorded tutorials mean you can get the help you need when and how you need it!

AskCHIS Neighborhood Edition Trainings:

-  Introduction to AskCHIS NE
AskCHIS Neighborhood Edition allows you to access hyper-local California health data, including ZIP code, legislative district, city and more!
-  How to build a basic Community Profile
Learn how to select a health topic and up to five hyper-local geographical locations.
-  How to adjust and visualize your data
Learn how to adjust results, visualize your data, and more!

The tutorials cover:

- How to do a basic query
- Displaying data visually
- How to export your data in a variety of formats (Excel, email, etc.)
- Confidence intervals, pooling, statistical stability and much more!

Public Use Files (PUFs) for One or Two Years

One Year (2018) CHIS PUF

- Available for download now!
- Free!
- Available as in SAS, SPSS, and STATA format
- Record-level data to use in conducting your own analysis, with reduced detailed information and removal of sensitive questions to protect confidentiality

Two Year (2017-2018) CHIS PUF

- Available in January 2020
- Free!
- Available as in SAS, SPSS, and STATA format
- Record-level data to use in conducting your own analysis, with reduced detailed information and removal of sensitive questions to protect confidentiality
- Less aggregation of response data (such as more detailed race categories) to enable more powerful analysis!
- Requires a brief, one-page application explaining use of planned analysis and requestor's contact information

Please visit us @ www.chis.ucla.edu

Special thanks to our data collection partner SSRS,
our content partner PHI, the members of our
Advisory Board and committees, and the rest of
the UCLA CHPR CHIS Team:

Julian Aviles

Ruochen Ma

Maia Smith

Zebry Jiang

Royce Park

Flor Vásquez

Andrew Juhnke

Dana Paycao

Brian Wells

Errol Lopez

Jacob Rosalez

YuChing Yang