

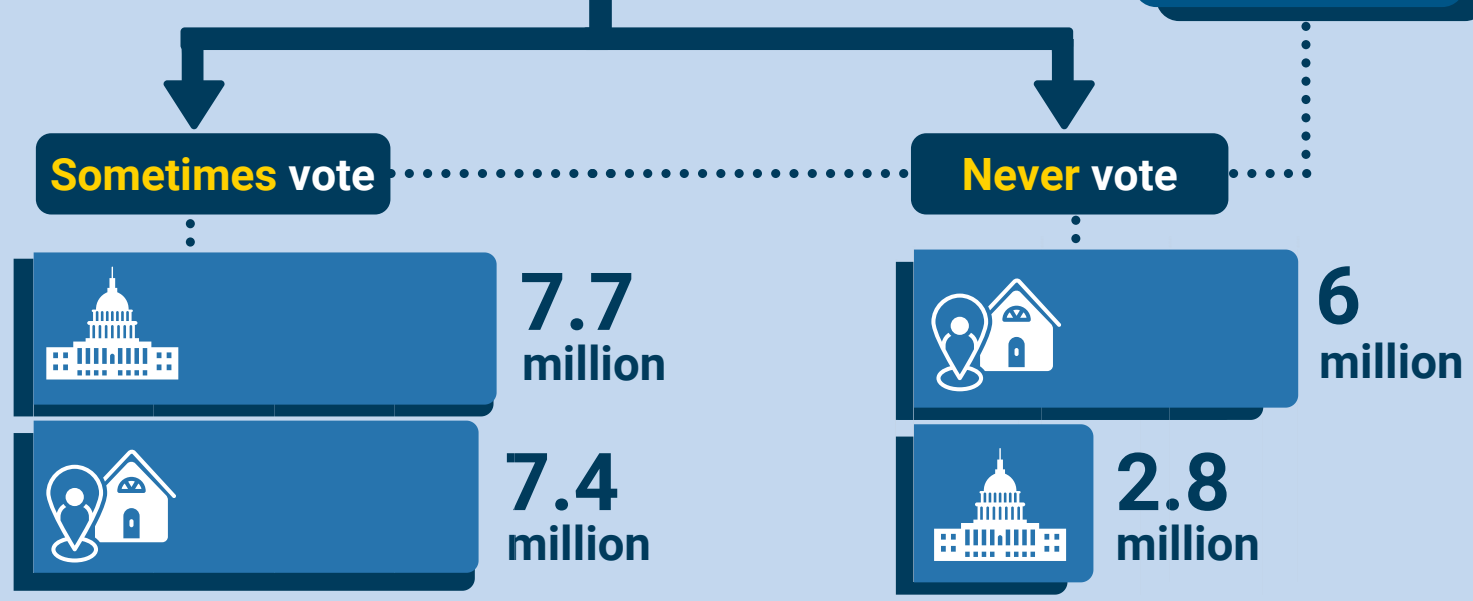
Voter Participation in California Varies Widely by Type of Election and by Voter Race and Ethnicity

Who is least likely to vote in California?

It depends on the type of contest. More adult Californians avoid state and local elections than presidential contests, according to the 2019 California Health Interview Survey. Voting also varies widely by race and ethnicity.

Legend:

- Local elections
- All elections



Least likely to vote, by race and ethnicity (Percentage who say they "never" or "sometimes" vote)

In presidential elections

- 39% Asians
- 34% Latinos
- 32% *AIAN & NHPI

In local elections

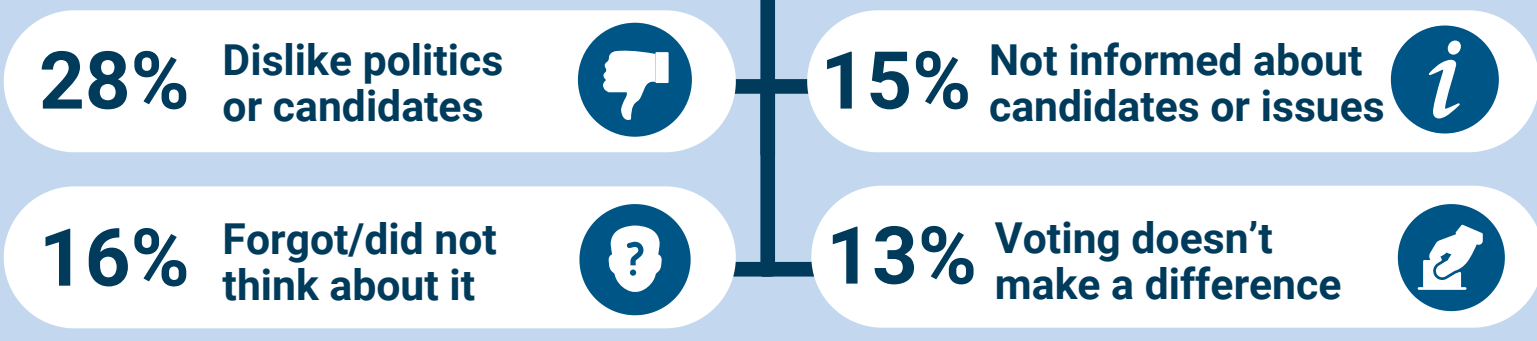
- 62% Asians
- 61% Latinos
- 47% African Americans

*AIAN = American Indian and Alaska Native
NHPI = Native Hawaiian and Pacific Islander

Wide gaps in voting within Asian, Latino groups (Percentage of Asian and Latino adults who "never" or "sometimes" vote, by election type)

	Local race	Presidential race	Voting gap
Puerto Rican	72%	15%	57 percentage points (pp)
Salvadoran	60%	38%	22 pp
Japanese	56%	24%	32 pp
Southeast Asian	59%	50%	9 pp

Top reasons cited for not voting in presidential elections among those who "never" or "sometimes" vote



Source: 2019 California Health Interview Survey. From the UCLA CHPR fact sheet *Voter Participation in California Varies Widely by Type of Election, Voter Race and Ethnicity*, October 2020